



**Lemon  
& Soda**



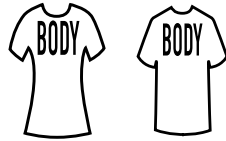
ORIGINALS

WORKWEAR

DELUXE

PRIVATE LABEL

# FITTING



## Body fit

Our body fit styles are slim cut and rather clinging to your body. Contoured and side seamed for a more next to body fit.



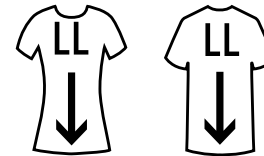
## Regular fit

These styles follow your body in a flattering way, without clinging to it. The sleeves and shoulders fit closer to the body. The regular fit is currently the most popular shape.



## Comfort fit

Drapes away from the body for a relaxed fit and extra movement. A timeless fit has a generous, comfort forward cut and fuller sleeves for freer movement throughout. This fit has a comfortable width.



## Longer length

In addition to the different sizes, these T-shirts are longer than standard size, which ensures a pleasant wearing comfort.



A tear-away brand label or no brand label in the neck. This makes personalization very easy.



In transition. A tear-away brand label or no brand label in the neck. This makes personalization very easy.



# CONTENT & CONCEPTS

 T-shirts	4
 Poloshirts	18
 Sweats	31
 Shirts	44
 Outerwear	49
 Underwear & accessories	56
 Workwear collection	58
 Private Label by Lemon & Soda	64
 Additional info	80
 Colour chart	80
 Care guide	88
 Sustainability	89
 Index	90

T-SHIRTS



The I-Tee has been treated with a bio-washing which provides an extra **SMOOTH SURFACE.**

This makes the T-shirt ideal for printing or embroidery.



**ORIGINALS**



## I-TEE T-SHIRT

- LADIES STYLE
- BIO-WASHED
- HIGH QUALITY

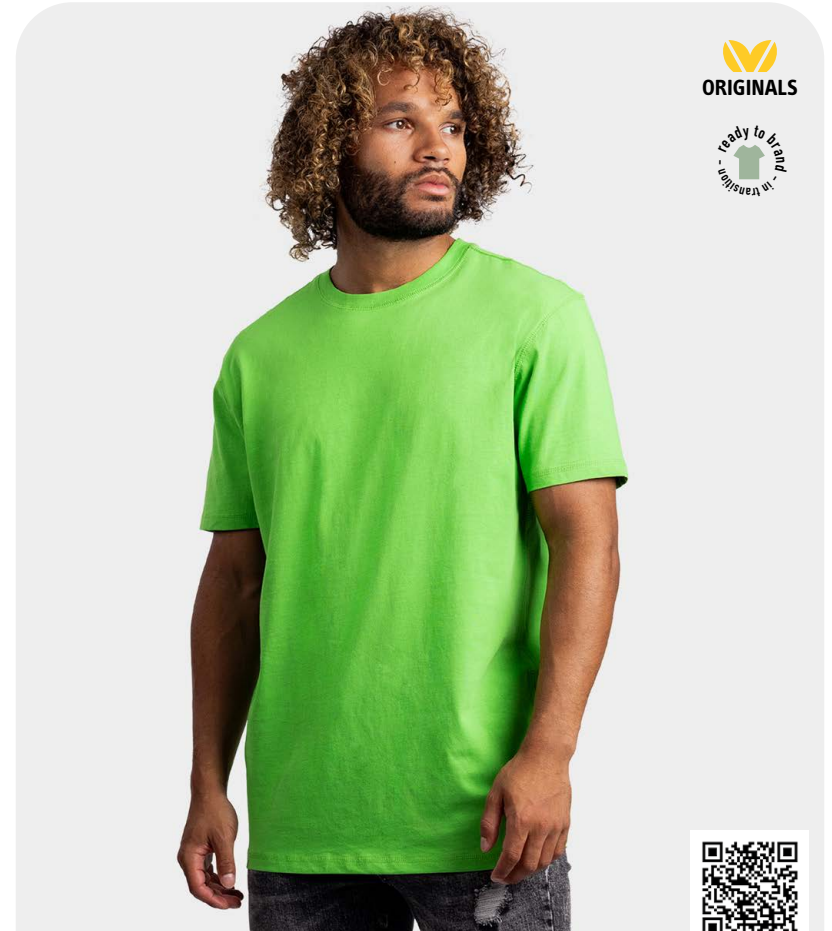
**LEM112**  
S - XXL | 3XL\*



100% combed cotton  
Single jersey  
180 gr/m<sup>2</sup> (white 170)

* [White]	[Orange]	* [Red]	[Royal Blue]
White	Orange	Red	Royal Blue
* [Dark Navy]	[Lime]	[Forest Green]	[Grey Heather]
Dark Navy	Lime	Forest Green	Grey Heather
[Pearl Grey]	[Dark Grey]	* [Black]	
Pearl Grey	Dark Grey	Black	

\* also available in 3XL  
▲ cotton/viscose mix



**ORIGINALS**



## I-TEE T-SHIRT

- UNISEX STYLE
- BIO-WASHED
- WIDE SIZE RANGE

**LEM111**  
S - 3XL | 4XL - 6XL\*



100% combed cotton  
Single jersey  
180 gr/m<sup>2</sup> (white 170)

* [White]	[Orange]	* [Red]	[Royal Blue]
White	Orange	Red	Royal Blue
* [Dark Navy]	[Lime]	[Forest Green]	[Grey Heather]
Dark Navy	Lime	Forest Green	Grey Heather
[Pearl Grey]	[Dark Grey]	* [Black]	
Pearl Grey	Dark Grey	Black	

\* also available in 4XL-6XL  
▲ cotton/viscose mix

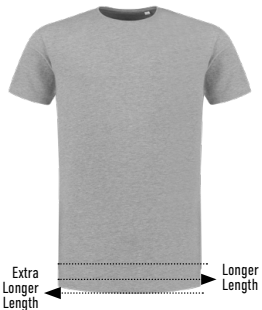
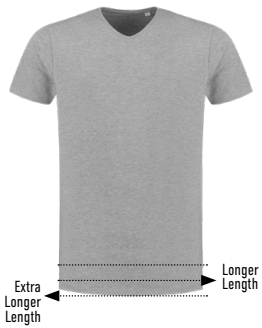
LONGER  
LENGTH



EXTRA  
LONGER  
LENGTH



2  
different lengths and  
5  
different colours  
make the V-neck and  
Crew-neck T-shirt a  
**BESTSELLER**



## FINE COTTON ELASTANE V-NECK T-SHIRT

- UNISEX STYLE
- LONGER +  
EXTRA LONGER LENGTH

### LEM1135

Longer length: S - 6XL  
Extra longer length: S - 6XL



95% combed cotton - 5% elastane  
Single jersey  
160 gr/m<sup>2</sup> (white 150)



▲ cotton/viscose mix



## FINE COTTON ELASTANE T-SHIRT

- UNISEX STYLE
- LONGER +  
EXTRA LONGER LENGTH

### LEM1130

Longer length: S - 6XL  
Extra longer length: S - 6XL



95% combed cotton - 5% elastane  
Single jersey  
160 gr/m<sup>2</sup> (white 150)



▲ cotton/viscose mix


  
DELUXE




## COTTON ELASTANE T-SHIRT

**LEM1269**

S - 3XL | 4XL - 6XL\*



95% combed cotton - 5% elastane  
Single jersey  
200 gr/m<sup>2</sup> (white 190)

- UNISEX STYLE
- LONGER LENGTH
- STRETCH



\* also available in 4XL - 6XL  
▲ cotton/viscose mix


  
DELUXE




## COTTON ELASTANE T-SHIRT

**LEM1268**

S - XXL | 3XL\*



95% combed cotton - 5% elastane  
Single jersey  
200 gr/m<sup>2</sup> (white 190)

- LADIES STYLE
- LONGER LENGTH
- STRETCH

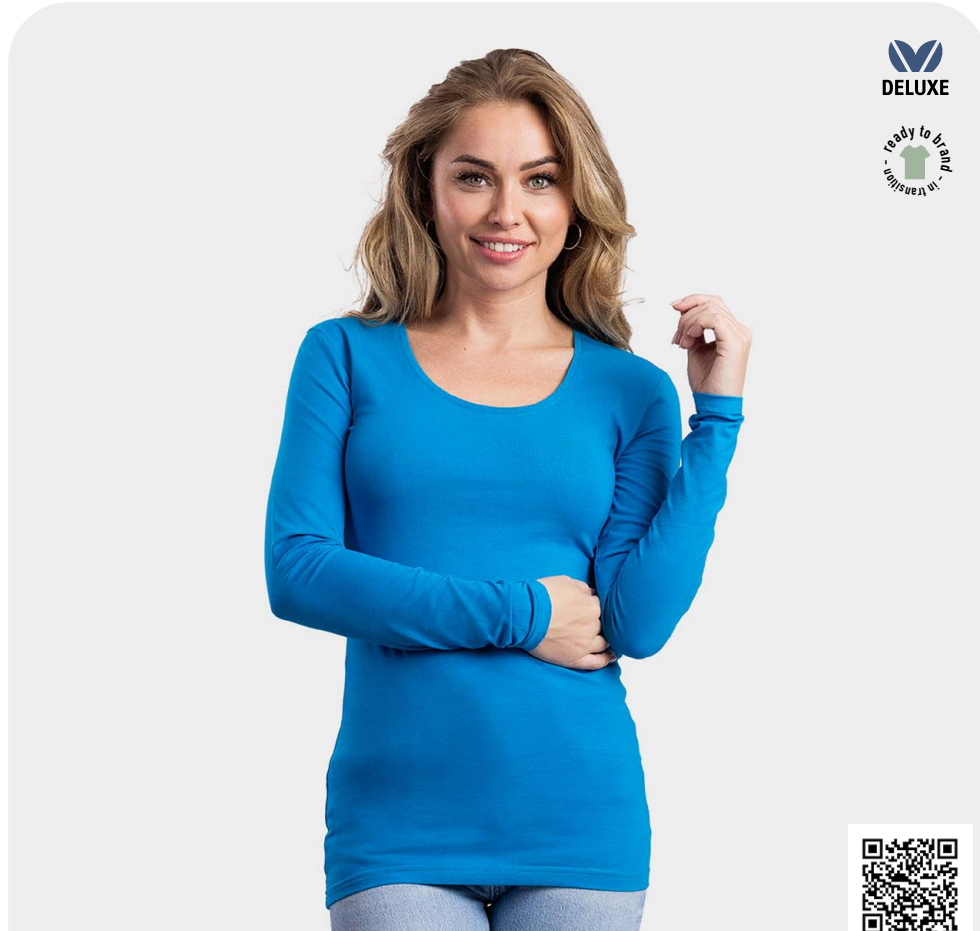


\* also available in 3XL  
▲ cotton/viscose mix

15  
different colours and  
6  
different styles  
for him and for her







### COTTON ELASTANE T-SHIRT

- LADIES STYLE
- LONGER LENGTH
- STRETCH

**LEM1267**  
S - XXL | 3XL\*



95% combed cotton - 5% elastane  
Single jersey  
200 gr/m<sup>2</sup> (white 190)



\* also available in 3XL  
▲ cotton/viscose mix

### COTTON ELASTANE T-SHIRT

- UNISEX STYLE
- LONGER LENGTH
- STRETCH

**LEM1265**  
S - 3XL | 4XL - 6XL\*



95% combed cotton - 5% elastane  
Single jersey  
200 gr/m<sup>2</sup> (white 190)



\* also available in 4XL - 6XL  
▲ cotton/viscose mix

# T-SHIRTS



## COTTON ELASTANE V-NECK T-SHIRT

**LEM1264**  
S - 3XL | 4XL - 6XL\*

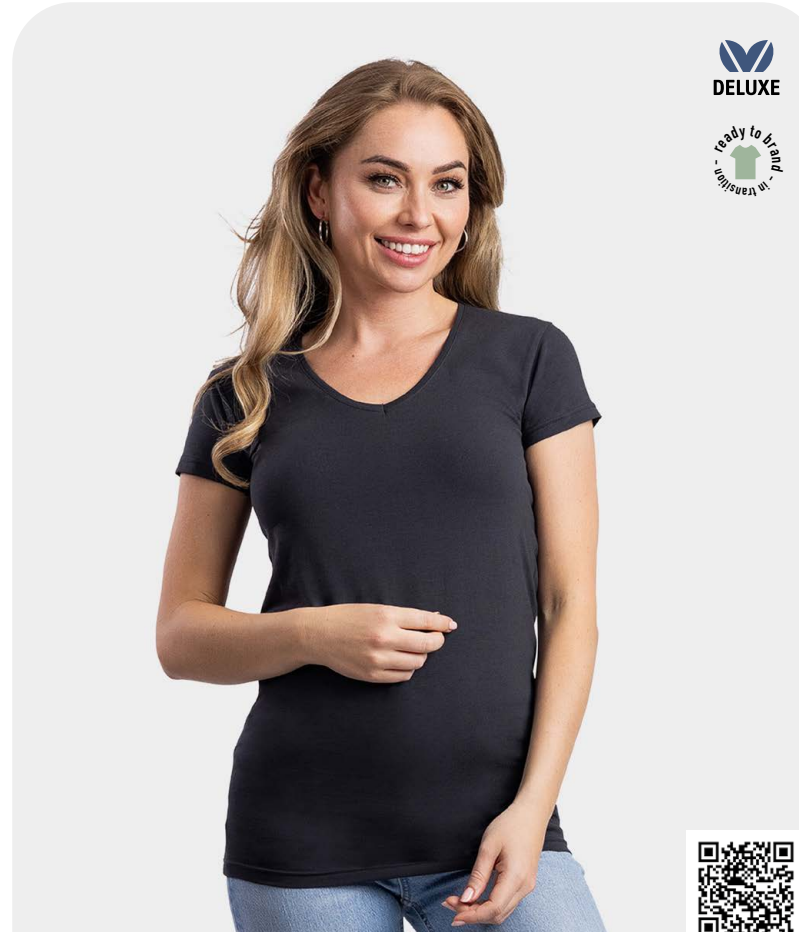


95% combed cotton - 5% elastane  
Single jersey  
200 gr/m<sup>2</sup> (white 190)

- UNISEX STYLE
- PREMIUM QUALITY
- STRETCH



\* also available in 4XL - 6XL  
▲ cotton/viscose mix



## COTTON ELASTANE V-NECK T-SHIRT

**LEM1262**  
S - XXL | 3XL\*



95% combed cotton - 5% elastane  
Single jersey  
200 gr/m<sup>2</sup> (white 190)

- LADIES STYLE
- PREMIUM QUALITY
- STRETCH



\* also available in 3XL  
▲ cotton/viscose mix

15  
different colours and  
6  
different styles  
for him and for her





## COTTON ELASTANE TANKTOP

**LEM1270**  
S - XXL



95% combed cotton - 5% elastane  
Single jersey  
200 gr/m<sup>2</sup> (white 190)

- LADIES STYLE
- PREMIUM QUALITY
- STRETCH



▲ cotton/viscose mix



## COTTON ELASTANE TANKTOP

**LEM1275**  
S - 3XL



95% combed cotton - 5% elastane  
Single jersey  
200 gr/m<sup>2</sup> (white 190)

- UNISEX STYLE
- PREMIUM QUALITY
- STRETCH



▲ cotton/viscose mix

MORE THAN

100

COLOURS



**PRIVATE LABEL**

BY **Lemon&Soda**



Scan for sales prices and  
more product information



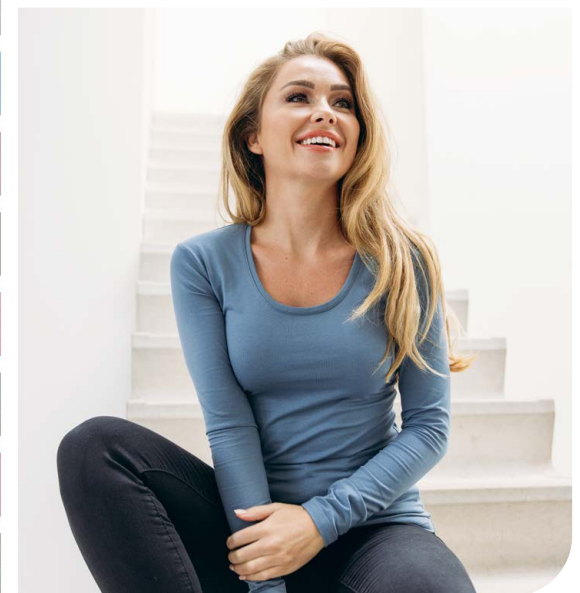
NEW

# CREATE YOUR OWN COTTON/ELASTANE T-SHIRT. HOW? EASY!

- Pick a Lemon & Soda cotton/elastane model
- Choose a colour from the more than 100 options
- MOQ 120 pieces
- Minimum of 10 pieces per size
- Every size you need
- Composition: 93,5% cotton – 6,5% elastane --- single jersey, 200/210 gr/m<sup>2</sup>
- Original Lemon & Soda fit
- Without neck label or print delivery 8 till 10 weeks\*
- With customize neck label and print delivery 10 till 12 weeks\*\*

\* This delivery time is valid outside Chinese New Year

\*\* Approval by picture



# T-SHIRTS

**WORKWEAR**



## WORKWEAR UNI T-SHIRT

- UNISEX STYLE
- UP TO 6XL
- WASHABLE AT 60° DEGREES

**LEM4501**  
S - 6XL



100% combed cotton  
Single jersey  
180 gr/m<sup>2</sup> (white 170)



**WORKWEAR**



## WORKWEAR CONTRAST T-SHIRT

- UNISEX STYLE
- UP TO 6XL
- PREMIUM QUALITY

**LEM4500**  
S - 6XL



100% combed cotton  
Single jersey  
180 gr/m<sup>2</sup> (white 170)





WORKWEAR



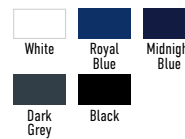
EVERYWEAR  
COOLDRY T-SHIRT

- LADIES STYLE
- WIDE SIZE RANGE
- BREATHABLE

**LEM4502**  
S - 3XL



50% cotton (inside) -  
50% polyester (outside)  
Piqué  
170 gr/m<sup>2</sup> (white 165)



WORKWEAR



EVERYWEAR  
COOLDRY T-SHIRT

- UNISEX STYLE
- WIDE SIZE RANGE
- BREATHABLE

**LEM4504**  
S - 6XL



50% cotton (inside) -  
50% polyester (outside)  
Piqué  
170 gr/m<sup>2</sup> (white 165)









**WORKWEAR**  
BY Lemon&Soda

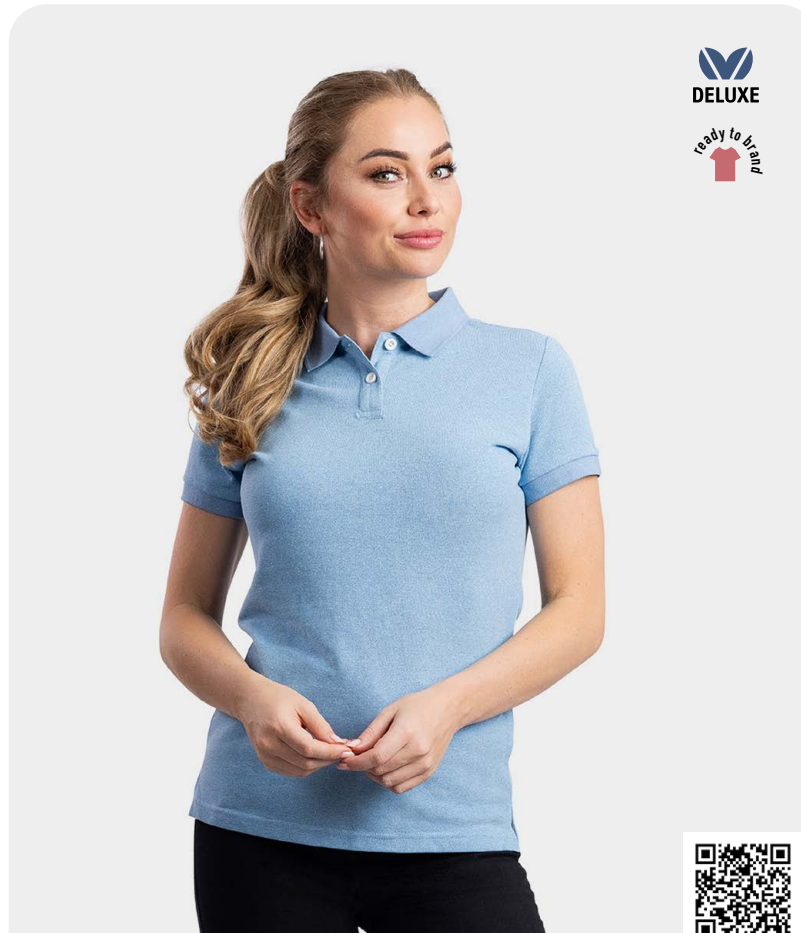
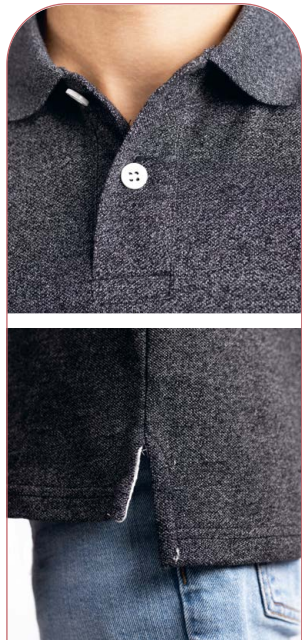
# Contrast

**6 items - 8 sizes**  
**10 colour combinations**

Discover the contrast Workwear line:  
6 essential items, available in 8 sizes and 10  
colour combinations. Choose from a versatile  
selection for the perfect professional look.  
Discover comfort and durability in every variant,  
ready to meet all your work needs.

POLOSHIRTS





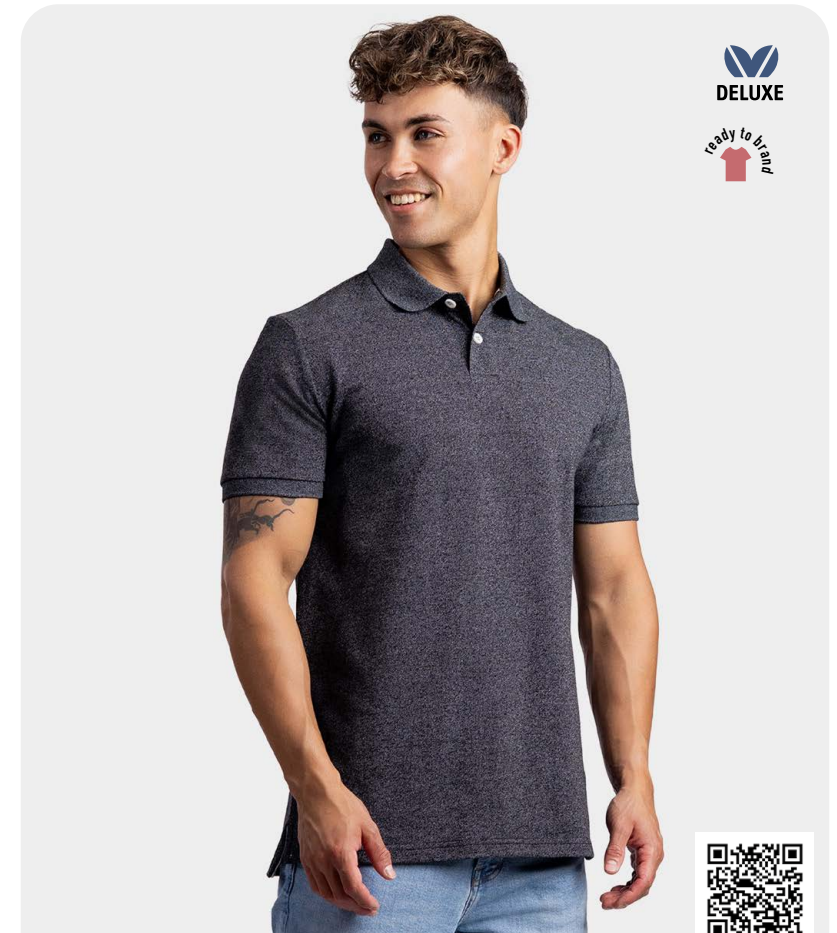
## HEATHER MIX POLO

- LADIES STYLE
- WITH SIDE SLITS

**LEM3550**  
S - XXL



50% combed cotton - 50% polyester  
Piqué  
220 gr/m<sup>2</sup>



## HEATHER MIX POLO

- UNISEX STYLE
- WITH SIDE SLITS
- WIDE SIZE RANGE

**LEM3552**  
S - 6XL



50% combed cotton - 50% polyester  
Piqué  
220 gr/m<sup>2</sup>



# POLOSHIRTS



## BASIC COTTON ELASTANE POLO

**LEM3572**

S - 3XL | 4XL - 6XL\*



95% combed cotton -  
5% elastane  
Piqué  
240 gr/m<sup>2</sup> (white 230)

- UNISEX STYLE
- LONGER LENGTH
- STRETCH



\* also available in 4XL - 6XL  
▲ cotton/viscose mix



## BASIC COTTON ELASTANE POLO

**LEM3570**

S - XXL | 3XL\*

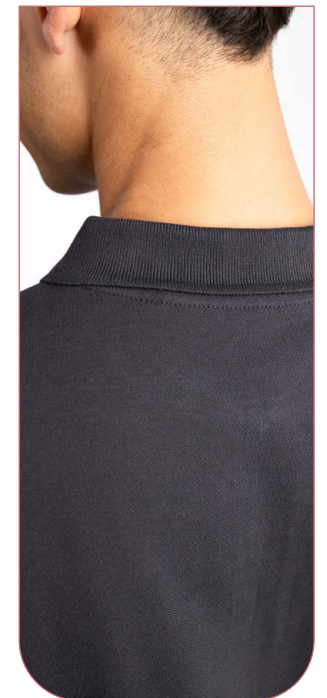


95% combed cotton -  
5% elastane  
Piqué  
240 gr/m<sup>2</sup> (white 230)

- LADIES STYLE
- LONGER LENGTH
- STRETCH



\* also available in 3XL  
▲ cotton/viscose mix



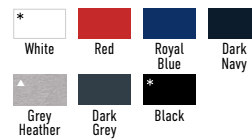
**BASIC** cotton elastane polo, longer length and stretch for a comfortable fit. For both, men and women, with short and long sleeves.



## BASIC COTTON ELASTANE POLO

- LADIES STYLE
- LONGER LENGTH
- STRETCH

**LEM3574**  
S - XXL | 3XL\*



95% combed cotton - 5% elastane  
Piqué  
240 gr/m<sup>2</sup> (white 230)

\* also available in 3XL  
▲ cotton/viscose mix



## BASIC COTTON ELASTANE POLO

- UNISEX STYLE
- LONGER LENGTH
- STRETCH

**LEM3576**  
S - 3XL



95% combed cotton - 5% elastane  
Piqué  
240 gr/m<sup>2</sup> (white 230)

\* also available in 3XL  
▲ cotton/viscose mix

# POLOSHIRTS



## EVERYWEAR COOLDRY POLO

**LEM4604**  
S - 6XL



50% cotton (inside) -  
50% polyester (outside)  
Piqué  
170 gr/m<sup>2</sup> (white 165)

- UNISEX STYLE
- LONGER LENGTH
- UNIQUE QUALITY



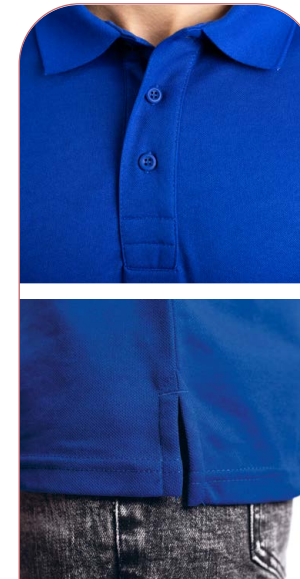
## EVERYWEAR COOLDRY POLO

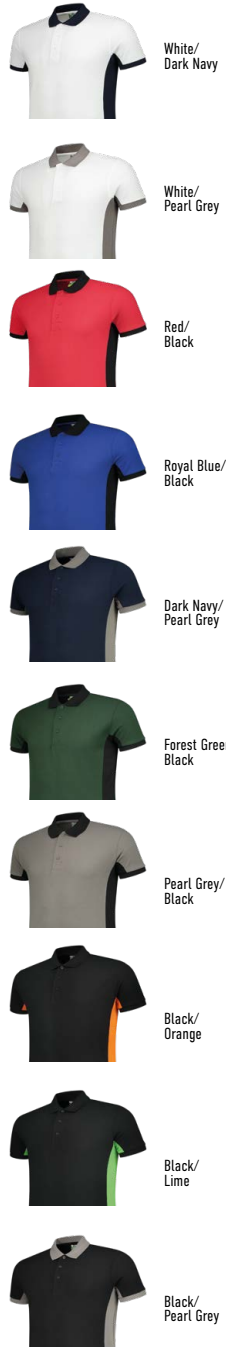
**LEM4602**  
S - 3XL



50% cotton (inside) -  
50% polyester (outside)  
Piqué  
170 gr/m<sup>2</sup> (white 165)

- LADIES STYLE
- LONGER LENGTH
- UNIQUE QUALITY





**WORKWEAR**  
ready to brand



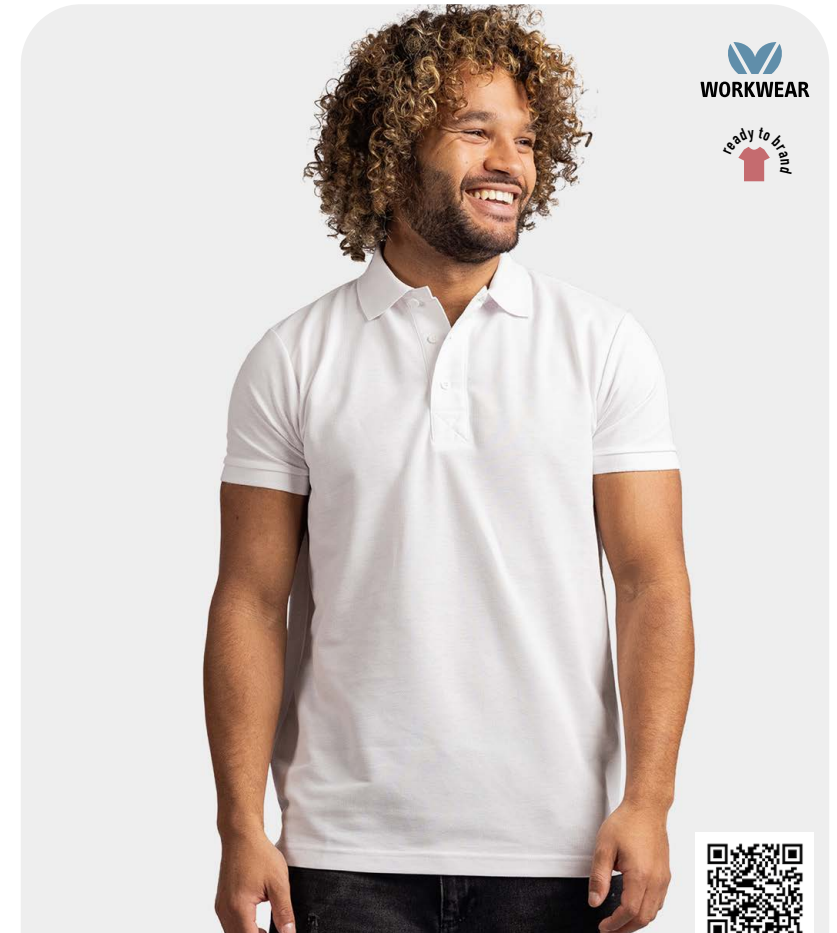
## WORKWEAR CONTRAST POLO

- UNISEX STYLE
- LONGER LENGTH
- WASHABLE AT 60°

**LEM4600**  
S - 6XL



35% combed cotton -  
65% polyester  
Double Lacoste piqué  
240 gr/m<sup>2</sup> (white 230)



**WORKWEAR**  
ready to brand



## WORKWEAR UNI POLO

- UNISEX STYLE
- LONGER LENGTH
- WIDE SIZE RANGE

**LEM4601**  
S - 6XL



35% combed cotton -  
65% polyester  
Double Lacoste piqué  
240 gr/m<sup>2</sup> (white 230)





ORIGINALS



## FIT POLO

**LEM3510**

S - 3XL | 4XL - 6XL\*



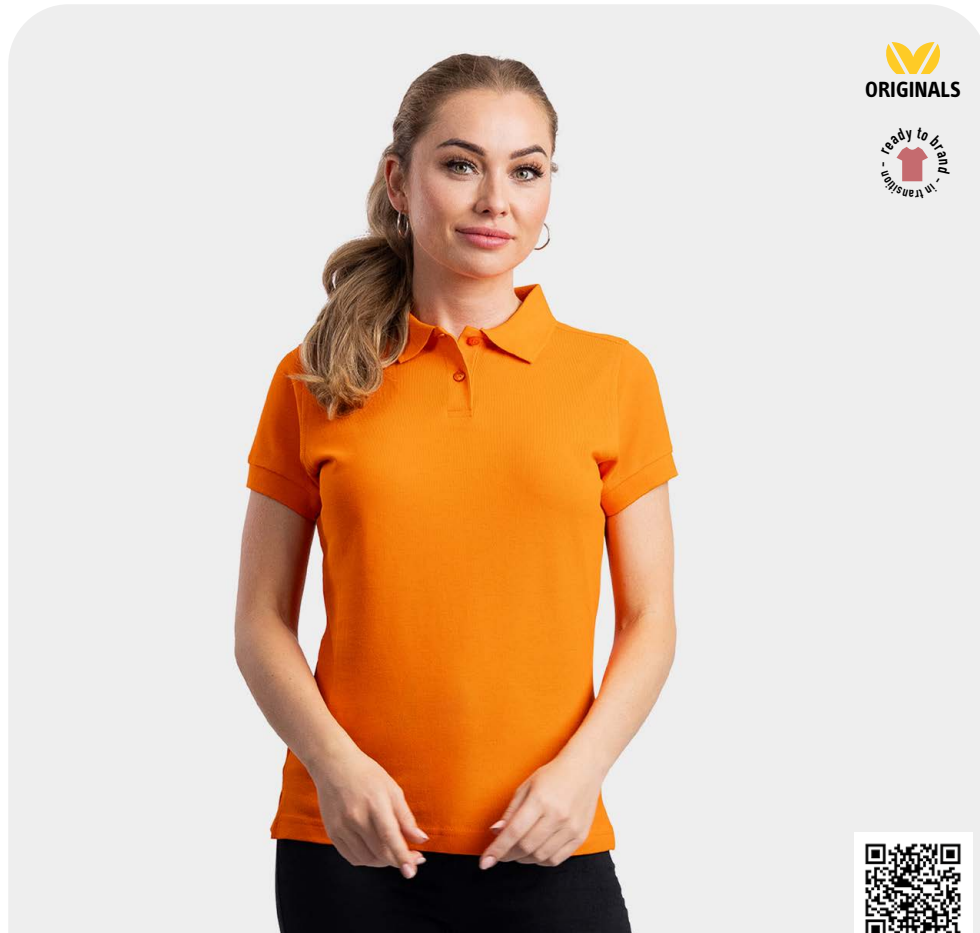
100% combed cotton  
Double Lacoste piqué  
220 gr/m<sup>2</sup> (white 210)

- UNISEX STYLE
- ALL-TIME FAVOURITE

\*also available in 4XL - 6XL







## BASIC POLO

- LADIES STYLE
- ALL-TIME FAVOURITE

LEM3535  
S - XXL



100% combed cotton  
Double Lacoste piqué  
220 gr/m<sup>2</sup> (white 210)



## BASIC POLO

- UNISEX STYLE
- ALL-TIME FAVOURITE

LEM3540  
S - XXL | 3XL\*



100% combed cotton  
Double Lacoste piqué  
220 gr/m<sup>2</sup> (white 210)



\* also available in 3XL  
▲ cotton/viscose mix



ORIGINALS



## HEAVY MIX FIT POLO

LEM3511

S - 3XL | 4XL - 6XL\*



35% combed cotton - 65% polyester  
Double Lacoste piqué  
240 gr/m<sup>2</sup> (white 220)

- UNISEX STYLE
- LONGER LENGTH

\* also available in 4XL - 6XL



The **BASIC MIX**  
and the  
**HEAVY MIX**  
polo are all-time favorites.  
They're longer length  
and washable at 60° .



**Heavy Mix Polo  
Unisex**

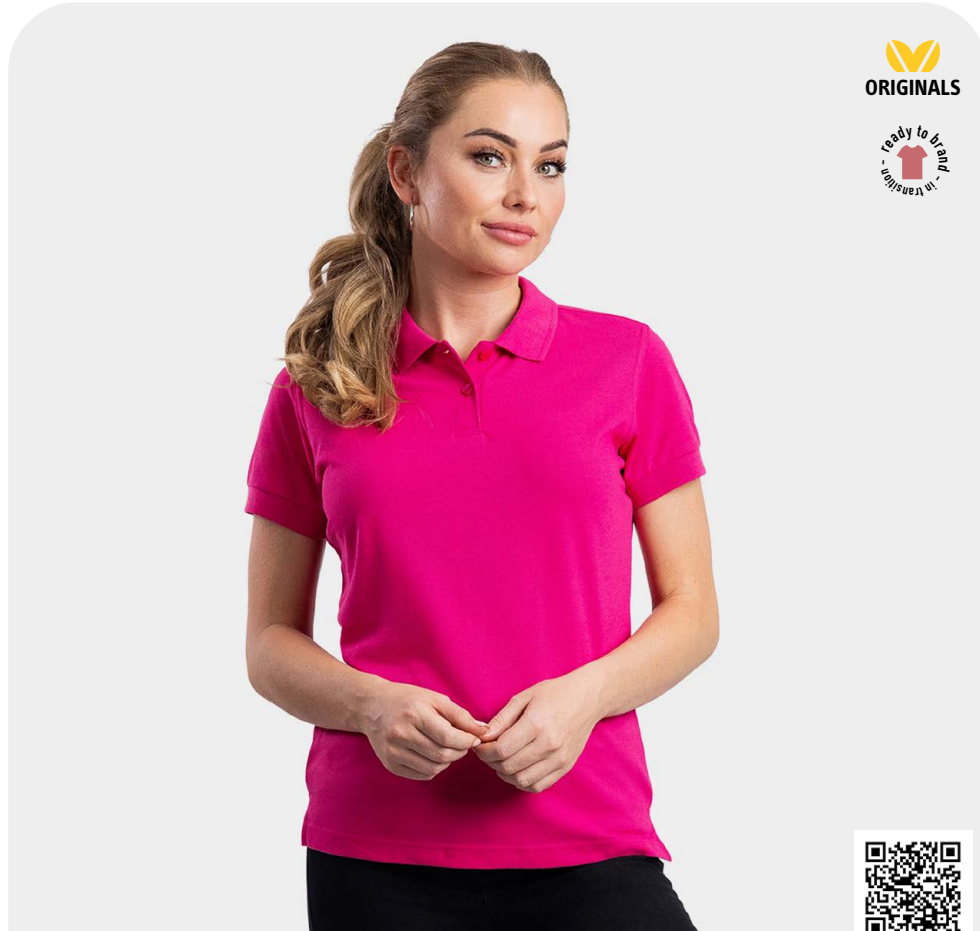


**Basic Mix Polo  
Women**



**Basic Mix Polo  
Unisex**





**BASIC MIX POLO**

- LADIES STYLE
- WASHABLE AT 60°

**LEM3502**  
S - XXL | 3XL\*



35% combed cotton -  
65% polyester  
Piqué  
200 gr/m<sup>2</sup> (white 190)



\* also available in 3XL



**BASIC MIX POLO**

- UNISEX STYLE
- WASHABLE AT 60°
- WIDE SIZE RANGE

**LEM3500**  
S - 3XL | 4XL - 6XL\*



35% combed cotton -  
65% polyester  
Piqué  
200 gr/m<sup>2</sup> (white 190)



\* also available in 4XL - 6XL

# POLOSHIRTS



## FLAG POLO

**LEM3505**  
XS - 6XL



100% combed cotton  
Double Lacoste piqué  
220 gr/m<sup>2</sup>

- UNISEX STYLE
- ORANGE FLAG & ORANGE F1
- UP TO 6XL



## FLAG POLO

**LEM3503**  
S - 3XL



100% combed cotton  
Double Lacoste piqué  
220 gr/m<sup>2</sup>

- LADIES STYLE
- ORANGE FLAG



READY  
TO WIN!



  
**ORIGINALS**  
BY **Lemon&Soda**

SWEATS





White /  
Dark Navy



Royal Blue /  
Grey Heather



Dark Navy /  
Grey Heather



Grey Heather /  
Dark Navy



Black /  
Grey Heather



## HEAVYSWEAT HOODED CARDIGAN

- LADIES STYLE
- DOUBLE LINED  
CONTRAST HOOD

**LEM3220**  
S - XXL



65% cotton - 35% polyester  
Heavy sweat  
380 gr/m<sup>2</sup> (white 370)



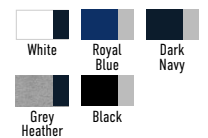
## HEAVYSWEAT HOODED CARDIGAN

- UNISEX STYLE
- DOUBLE LINED  
CONTRAST HOOD

**LEM3225**  
S - XXL



65% cotton - 35% polyester  
Heavy sweat  
380 gr/m<sup>2</sup> (white 370)





HEAVYSWEAT  
RAGLAN SWEATER

LEM3229

S - 3XL | 4XL - 6XL\*



65% cotton - 35% polyester  
Heavy sweat  
380 gr/m<sup>2</sup>

- UNISEX STYLE
- RAGLAN SLEEVES
- HEAVY RIBS



\* also available in 4XL - 6XL



HEAVYSWEAT  
RAGLAN SWEATER

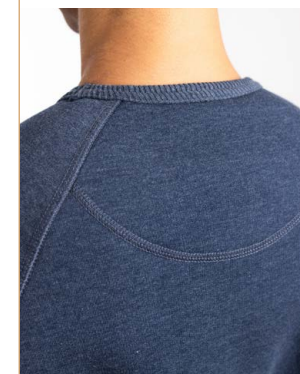
LEM3227

S - XXL



65% cotton - 35% polyester  
Heavy sweat  
380 gr/m<sup>2</sup>

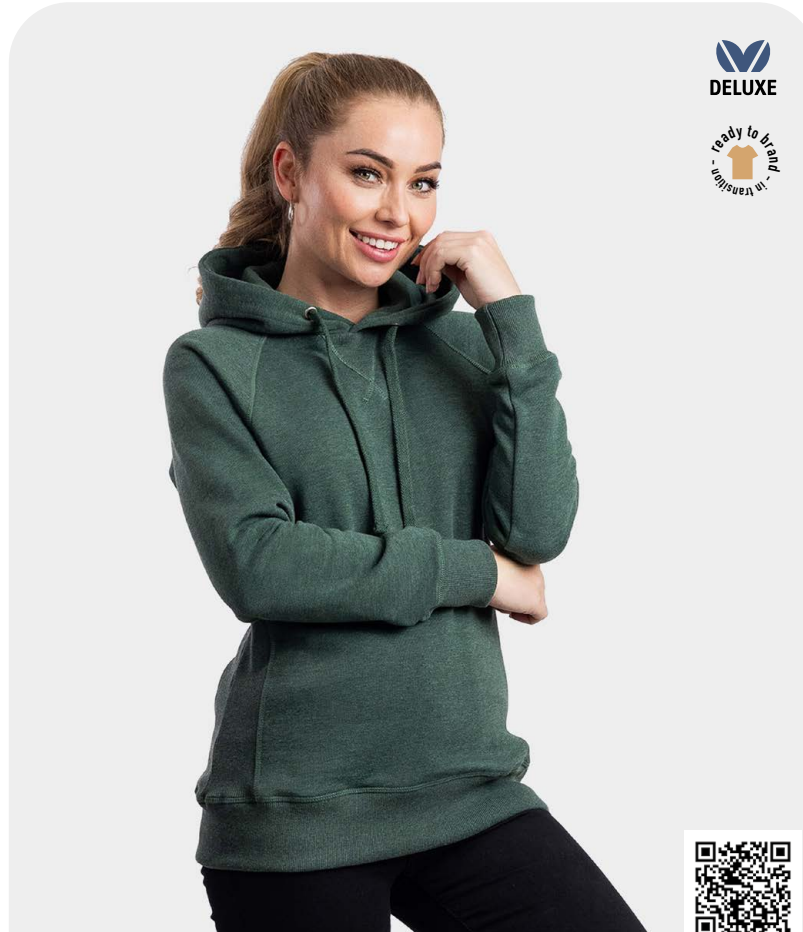
- LADIES STYLE
- RAGLAN SLEEVES
- HEAVY RIBS





## HEAVY SWEAT

with hood or a round neck and raglan sleeves. The sweater is finished with cuffs, hem, side inserts and a collar in a beautiful rib quality.



## HEAVYSWEAT HOODED RAGLAN SWEATER

- LADIES STYLE
- RAGLAN SLEEVES
- DOUBLE LINED HOOD

**LEM3232**

S - XXL



65% cotton - 35% polyester  
Heavy sweat  
380 gr/m<sup>2</sup>



## HEAVYSWEAT HOODED RAGLAN SWEATER

- UNISEX STYLE
- RAGLAN SLEEVES
- DOUBLE LINED HOOD

**LEM3234**

S - 3XL | 4XL - 6XL\*



65% cotton - 35% polyester  
Heavy sweat  
380 gr/m<sup>2</sup>



\* also available in 4XL - 6XL



## WORKWEAR UNI POLOSWEATER

**LEM4701**  
S - 6XL



65% cotton - 35% polyester  
Sweat  
280 gr/m<sup>2</sup> (white 270)

- UNISEX STYLE
- UP TO 6XL
- WASHABLE AT 60°



## WORKWEAR UNI SWEATER

**LEM4751**  
S - 6XL



65% cotton - 35% polyester  
Sweat  
280 gr/m<sup>2</sup> (white 270)

- UNISEX STYLE
- UP TO 6XL
- WASHABLE AT 60°





**WORKWEAR**  
BY Lemor&Soda

# Autumn 2024

New items will be  
added to the  
*everywear*  
collection



## WORKWEAR CONTRAST CARDIGAN

LEM4725



S - 6XL

65% cotton - 35% polyester

Sweat

280 gr/m<sup>2</sup> (white 270)

- UNISEX STYLE
- UP TO 6XL
- ZIPPER IN POCKETS



White/  
Dark Navy



White/  
Pearl Grey



Red/  
Black



Royal Blue/  
Black



DarkNavy/  
Pearl Grey



Forest Green/  
Black



Pearl Grey/  
Black



Black/  
Orange



Black/  
Lime



Black/  
Pearl Grey



10 different colours  
with 2 tones of colour.  
Fine workwear with contrast.



**WORKWEAR**



## WORKWEAR CONTRAST POLOSWEATER

- UNISEX STYLE
- UP TO 6XL

**LEM4700**  
S - 6XL



65% cotton - 35% polyester  
Sweat  
280 gr/m<sup>2</sup> (white 270)



**WORKWEAR**



## WORKWEAR CONTRAST SWEATER

- UNISEX STYLE
- UP TO 6XL

**LEM4750**  
S - 6XL



65% cotton - 35% polyester  
Sweat  
280 gr/m<sup>2</sup> (white 270)





SWEATER

- UNISEX STYLE
- WIDE SIZE RANGE

LEM3200

S - 6XL



65% cotton - 35% polyester  
Sweat  
280 gr/m<sup>2</sup> (white 270)



CARDIGAN

- UNISEX STYLE
- WIDE SIZE RANGE
- ZIPPER IN POCKETS

LEM3236

XS - 3XL | 4XL - 6XL\*



65% cotton - 35% polyester  
Sweat  
280 gr/m<sup>2</sup>



\* also available in 4XL - 6XL



POLOSWEATER

- LADIES STYLE
- ELASTANE IN CUFFS AND HEM

LEM3209  
S - XXL



65% cotton - 35% polyester  
Sweat  
280 gr/m<sup>2</sup> (white 270)



POLOSWEATER

- UNISEX STYLE
- ELASTANE IN CUFFS AND HEM
- WIDE SIZE RANGE

LEM3210  
S - 6XL



65% cotton - 35% polyester  
Sweat  
280 gr/m<sup>2</sup> (white 270)





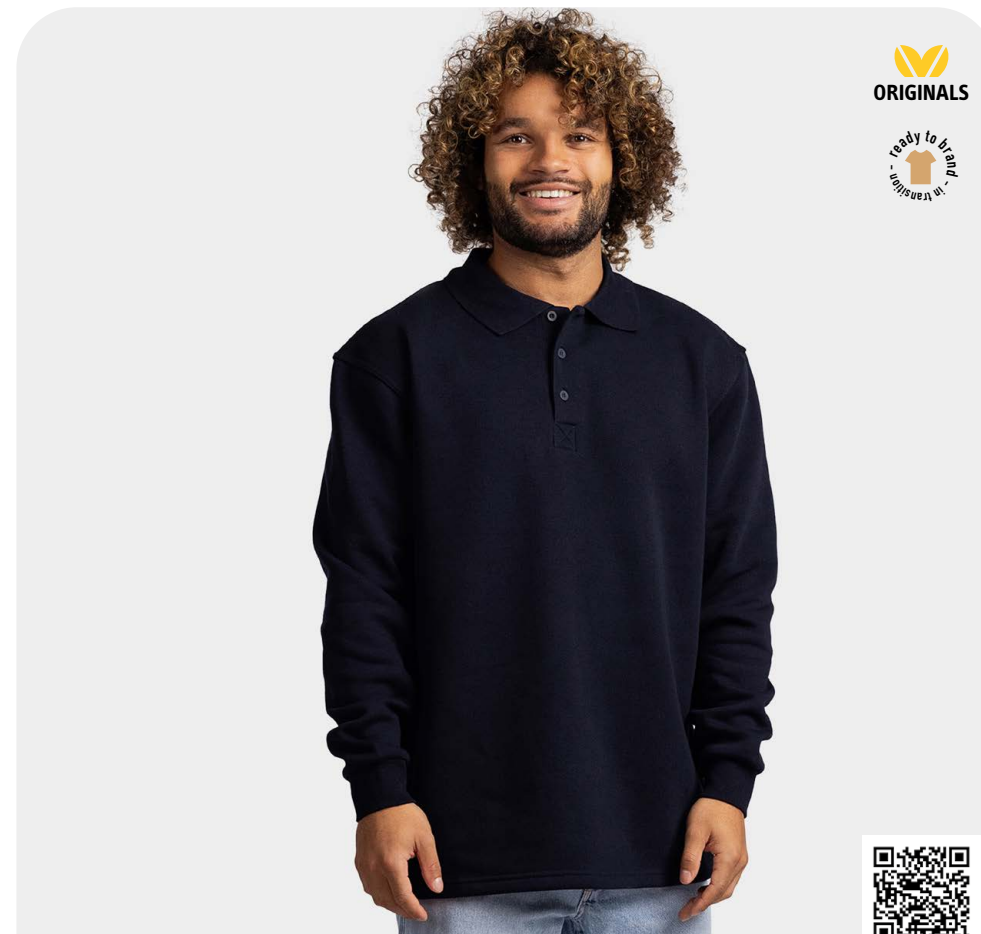
## ZIPSWEATER

- UNISEX STYLE
- WIDE SIZE RANGE

**LEM3231**  
S - 6XL



65% cotton - 35% polyester  
Sweat  
280 gr/m<sup>2</sup> (white 270)

POLOSWEATER  
WITH OPEN HEM

- UNISEX STYLE
- WIDE SIZE RANGE

**LEM3213**  
S - 6XL



65% cotton - 35% polyester  
Sweat  
280 gr/m<sup>2</sup> (white 270)







ORIGINALS



ORIGINALS



## HOODED CARDIGAN

- UNISEX STYLE
- DOUBLE LINED HOOD
- WIDE SIZE RANGE

LEM3270  
S - 6XL



65% cotton - 35% polyester  
Sweat  
280 gr/m<sup>2</sup> (white 270)

## HOODED SWEATER

- UNISEX STYLE
- DOUBLE LINED HOOD
- WIDE SIZE RANGE

LEM3276  
S - 6XL



65% cotton - 35% polyester  
Sweat  
280 gr/m<sup>2</sup> (white 270)



  
WORKWEAR

ready to brand  


## EVERYWEAR COOLDRY HOODED SWEATER

LEM4772



XS - 6XL

48% cotton (outside) - 47% polyester (inside) -  
5% elastane

Sweat

300 gr/m<sup>2</sup>

- QUICK-DRY
- ANTI-BACTERIAL
- POCKETS WITH SBS WATERPROOF ZIPPERS



NEW





EVERYWEAR COOLDRY  
CREWNECK SWEATER

LEM4732  
XS - 6XL



48% cotton (outside) - 47% polyester (inside)  
- 5% elastane  
Sweat  
300 gr/m2

- QUICK-DRY
- ANTI-BACTERIAL



EVERYWEAR COOLDRY  
SWEAT CARDIGAN

LEM4762  
XS - 6XL



48% cotton (outside) - 47% polyester (inside)  
- 5% elastane  
Sweat  
300 gr/m2

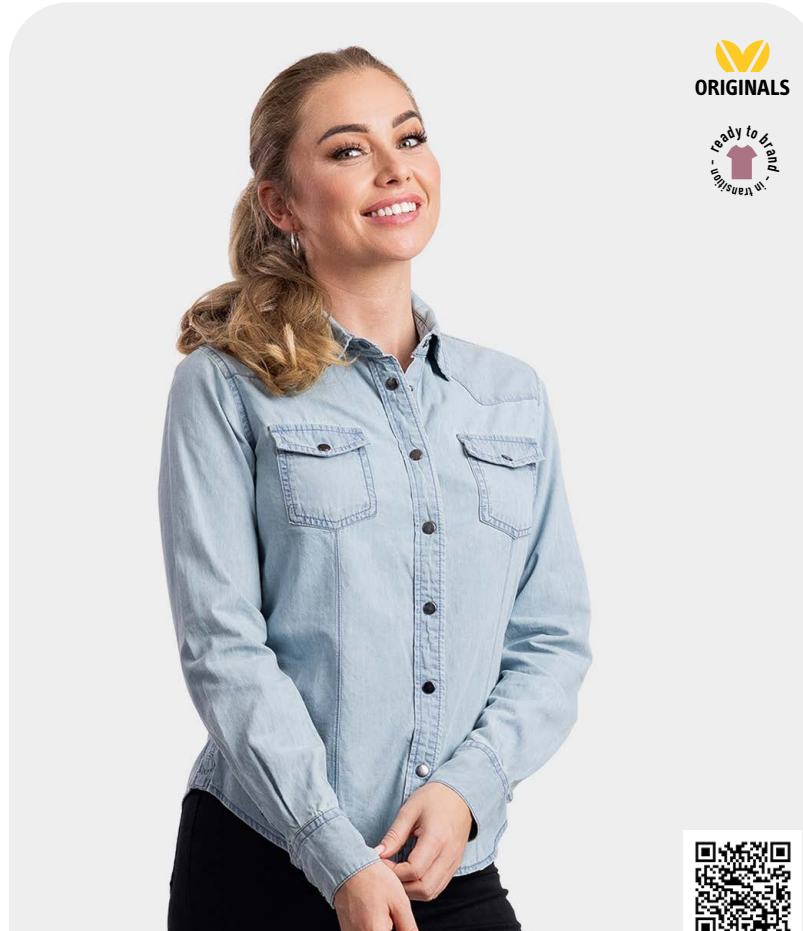
- QUICK-DRY
- ANTI-BACTERIAL
- SBS WATERPROOF ZIPPERS





SHIRTS

The **DENIM** blouse has two chest pockets and metal press studs. With this blouse you can choose from **3** denim washes.



**ORIGINALS**



## DENIM SHIRT

- LADIES STYLE
- UNIQUE QUALITY

**LEM3950**  
S - XXL



100% cotton  
Denim



**ORIGINALS**



## DENIM SHIRT

- UNISEX STYLE
- UNIQUE QUALITY
- WIDE SIZE RANGE

**LEM3960**  
XS - 6XL



100% cotton  
Denim



# SHIRTS



## STRETCH POLY-COTTON MIX POPLIN SHIRT

- UNISEX STYLE
- WIDE SIZE RANGE
- STRETCH

**LEM3925**

S (37-38) - 6XL (51-52)



35% cotton - 62% polyester - 3% spandex  
Poplin (133 x 72)



## STRETCH POLY-COTTON MIX POPLIN SHIRT

- LADIES STYLE
- STRETCH

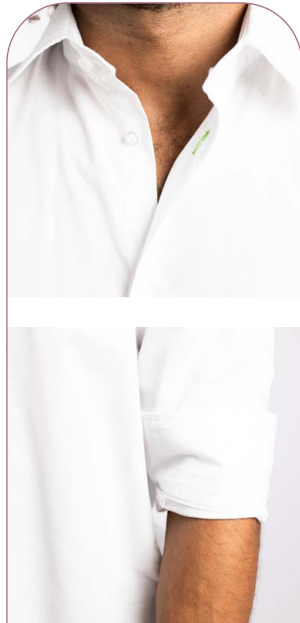
**LEM3923**

S - 3XL



35% cotton - 62% polyester - 3% spandex  
Poplin (133 x 72)





  
ORIGINALS



## POLY-COTTON MIX POPLIN SHIRT

- LADIES STYLE
- ONE BUTTONHOLE WITH CONTRASTING STITCHING

**LEM3932**  
S - 3XL



35% cotton - 65% polyester  
Poplin (133 x 72)



  
ORIGINALS



## POLY-COTTON MIX POPLIN SHIRT

- UNISEX STYLE
- ONE BUTTONHOLE WITH CONTRASTING STITCHING

**LEM3935**  
S (38-39) - 6XL (54-55)



35% cotton - 65% polyester  
Poplin (133 x 72)



OUTERWEAR







ORIGINALS



**POLAR FLEECE  
CARDIGAN**

- LADIES STYLE
- TWO POCKETS

**LEM3350**  
S - XXL



100% polyester  
Microfleece (one side anti-pilling)  
280 gr/m<sup>2</sup>



ORIGINALS



**POLAR FLEECE  
CARDIGAN**

- UNISEX STYLE
- TWO POCKETS

**LEM3355**  
S - 3XL



100% polyester  
Microfleece (one side anti-pilling)  
280 gr/m<sup>2</sup>





## SOFTSHELL HOODED JACKET

**LEM3629**  
S - 3XL



96% polyester - 4% spandex  
Softshell  
320 gr/m<sup>2</sup>

- UNISEX STYLE
- BREATHABLE
- STRETCH



For more information see page 55



## SOFTSHELL HOODED JACKET

**LEM3627**  
S - XXL



96% polyester - 4% spandex  
Softshell  
320 gr/m<sup>2</sup>

- LADIES STYLE
- BREATHABLE
- STRETCH



For more information see page 55



WORKWEAR



NEW



## EVERYWEAR SOFTSHELL HOODED JACKET

- LADIES STYLE
- DETACHABLE HOOD
- WATERPROOF ZIPPERS

LEM4827  
S - 3XL



96% polyester - 4% spandex  
Softshell  
320 gr/m<sup>2</sup>

For more information see page 55



WORKWEAR



NEW



## EVERYWEAR SOFTSHELL HOODED JACKET

- UNISEX STYLE
- DETACHABLE HOOD
- WATERPROOF ZIPPERS

LEM4829  
S - 6XL



96% polyester - 4% spandex  
Softshell  
320 gr/m<sup>2</sup>

For more information see page 55



**ORIGINALS**



**BODYWARMER**

- UNISEX STYLE
- WITH PRESS ZIPPERS
- CONTRAST FLEECE COLLAR

**LEM3770**  
XS - XXL | 3XL\*



100% polyester  
Micro fibre poplin



\* also available in 3XL



**WORKWEAR**



**WORKWEAR CONTRAST  
SOFTSHELL JACKET**

- UNISEX STYLE
- UP TO 6XL
- ZIPPER IN POCKETS

**LEM4800**  
S - 6XL



96% polyester - 4% spandex  
Softshell  
320 gr/m<sup>2</sup>



For more information see page 55





HOODED JACKET

- UNISEX STYLE
- STRETCH
- ZIPPER IN POCKETS

LEM3610  
S - 3XL



93% polyester - 7% spandex  
Micro fleece spandex (inside brushed)  
270 gr/m<sup>2</sup>



NEW



EVERYWEAR WINTER SOFTSHELL JACKET

- SBS ZIPPER
- POCKETS WITH SBS WATERPROOF ZIPPERS
- DETACHABLE HOOD

LEM4855  
XS - 6XL



96% polyester - 4% spandex --- Softshell  
100% polyester --- lining  
100% polyester --- padding  
320 gr/m<sup>2</sup>

For more information see page 55



**DELUXE**  
BY **Lemon&Soda**



# ALWAYS ON THE MOVE WITH SOFTSHELL

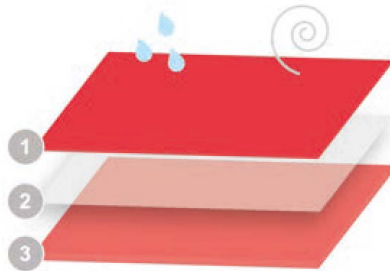
In wintertime or when working outside water resistant clothing is a must. The best protection against nature's way? Softshell! Softshell clothing offers warmth, comfort and is water repellent. It breathes and is flexible, making this type of material very suitable for outdoor activities, such as exercise and work.

There is a type of softshell for every occasion. To make the right choice, keep in mind the Thermoplastic Polyurethane (TPU), water resistance and breathing properties. It will help the wearer to stay warm and dry during activities.

## 3 LAYER SOFTSHELL BONDED - 4 WAY STRETCH

Water repellent

Water resistance



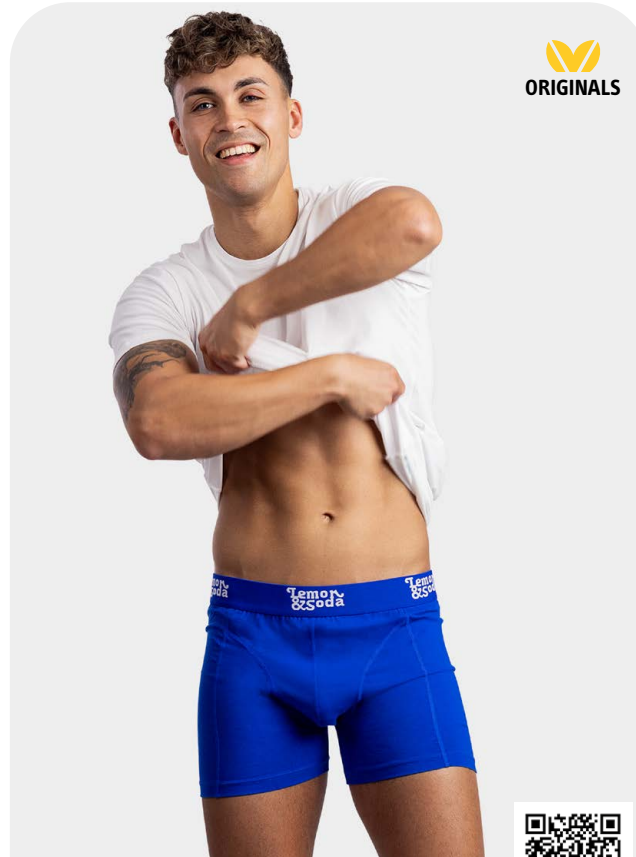
1. Outside  
Polyester - spandex --- poplin
2. TPU breathable membrane  
- Windproof  
- Waterproof (8.000 mm)  
- Breathable (5.000 gr/m<sup>2</sup>/24h)
3. Inside  
100% polyester --- microfleece (anti-pilling)



UNDERWEAR &  
ACCESSORIES







## BOXERSHORT

- STRETCH
- ELASTIC WAISTBAND
- PREMIUM QUALITY

**LEM1400**  
S - XXL



95% cotton - 5% spandex  
Single jersey  
190 gr/m<sup>2</sup>



## FLAG PULLER

**LEMAI35**  
Silicone

- COLOUR COMBINATION  
RED-WHITE-BLUE
- EASY TO ADD TO AN ITEM  
WITH A ZIPPER
- CAN BE ORDERED PER PIECE

WORKWEAR





**LEM4501**  
Workwear Uni T-shirt  
100% combed cotton



**LEM4601**  
Workwear Uni Polo  
35% combed cotton - 65% polyester



**LEM4701**  
Workwear Uni Polosweater  
65% cotton - 35% polyester



**LEM4751**  
Workwear Uni Sweater  
65% cotton - 35% polyester



Uni

**Basic & comfortable**

Lemon & Soda Uni collection;  
T-shirt, polo, sweater and  
polosweater. Basic workwear with  
a regular fit and a very high quality.  
A perfect base for company clothing  
and workwear, easy to print.

Available in sizes S through 6XL.

Available in 5 basic colours





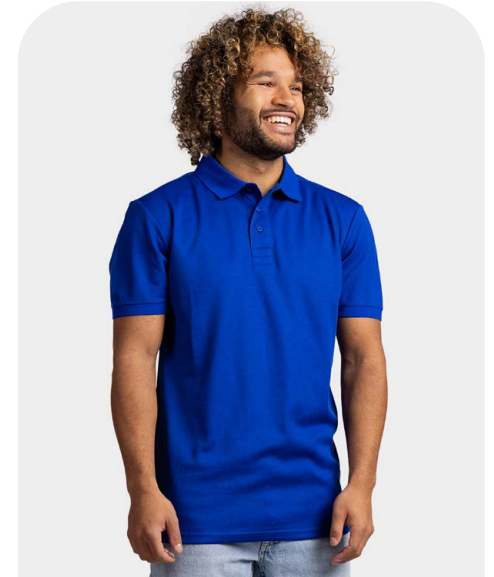
**LEM4502**  
Everywear Cooldry T-shirt  
50% cotton (inside) - 50% polyester (outside)



**LEM4504**  
Everywear Cooldry T-shirt  
50% cotton (inside) - 50% polyester (outside)



**LEM4602**  
Everywear Cooldry Polo  
50% cotton (inside) - 50% polyester (outside)



**LEM4604**  
Everywear Cooldry Polo  
50% cotton (inside) - 50% polyester (outside)

# Everywear

Premium quality - Breathable - Cooldry

Workwear is Everywear! The new Cooldry line from Lemon & Soda is a perfect basis for workwear. Comfortable antibacterial T-shirts and polo shirts for all professions, from carpenter to sports instructor and from dentist to waitress.

- Stretch
- Quick Drying
- Moisture Wicking

Available in 5 basic colours





**LEM4827**  
 Everywear Softshell Hooded Jacket  
 96% polyester - 4% spandex - softshell



**LEM4829**  
 Everywear Softshell Hooded Jacket  
 96% polyester - 4% spandex - softshell



NEW

**LEM4732**  
 Everywear Cooldry Crewneck Sweater  
 48% cotton (outside) - 47% polyester (inside) - 5% elastane



NEW

**LEM4772**  
 Everywear Cooldry Hooded Sweater  
 48% cotton (outside) - 47% polyester (inside) - 5% elastane



**LEM4762**  
 Everywear Cooldry Sweat Cardigan  
 48% cotton (outside) - 47% polyester (inside) - 5% elastane



NEW

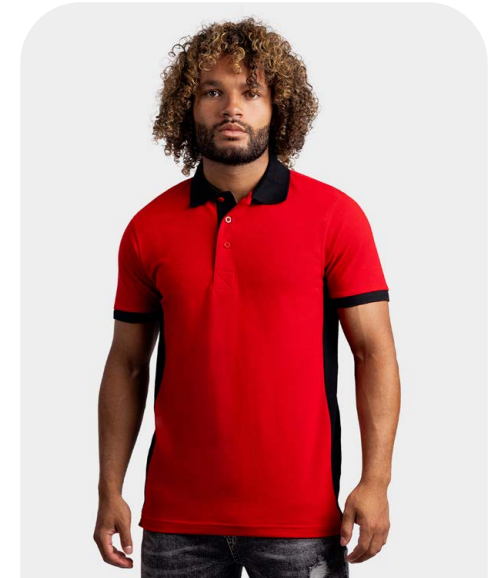
**LEM4855**  
 Everywear Winter Softshell Jacket  
 96% polyester - 4% spandex - softshell



NEW

**LEM4500**

Workwear Contrast T-shirt  
100% combed cotton

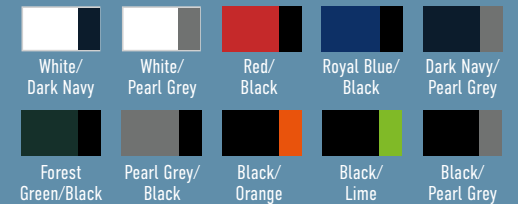
**LEM4600**

Workwear Contrast Polo  
35% combed cotton - 65% polyester

# Contrast

6 styles - 8 sizes  
10 colourcombinations

Lemon & Soda Workwear with contrast colours at the neckline and on the sides of the garment. The contrast collection is easy to provide with a company logo. A pleasant wearing comfort with a great fit.





**LEM4700**  
Workwear Contrast Polosweater  
65% cotton - 35% polyester



**LEM4750**  
Workwear Contrast Sweater  
65% cotton - 35% polyester



**LEM4725**  
Workwear Contrast Cardigan  
65% cotton - 35% polyester



**LEM4800**  
Workwear Contrast Softshell  
96% polyester - 4% spandex





PRIVATE LABEL

LONDON  
IN ESTABLISHED  
DETROIT

The original  
BY LONDON  
& SOHO

79



# your story your style your private label

Private Label by Lemon & Soda is a unique clothing concept to strengthen your corporate identity or image of your company. We will work with you to translate your corporate identity and appearance into a suitable clothing line. We think along with you throughout the entire process, from concept to delivery, and provide advice where necessary. This way the end product fits seamlessly with your wishes.

A strong and recognizable image is of great importance for your brand or company. We design and produce clothing that is completely tailored to your wishes and requirements. Whether you are looking for corporate, promotional or merchandise clothing, Private Label by Lemon & Soda has it all!

Through years of experience in the clothing industry, we ensure that the process is simple and efficient for you. We are ready to guide you every step of the way. From designing the clothing, selecting the right quality fabrics and colors, to refining your logo and other artwork. We ensure that the items perfectly match your brand identity.

With Private Label you are assured of high-quality clothing. These clothes are made from durable materials that are comfortable to wear and last a long time. In addition, we have strict quality controls to ensure that only the best garments leave the factories.

Flexibility is paramount. Whether it concerns small quantities or larger production runs, we can meet all your wishes. We also offer the option of hang tags with your own logo and custom packaging. This so that your clothing line exudes even more exclusivity.

Curious about what we can do for your brand? Contact us and make a lasting impression with Private Label by Lemon & Soda!



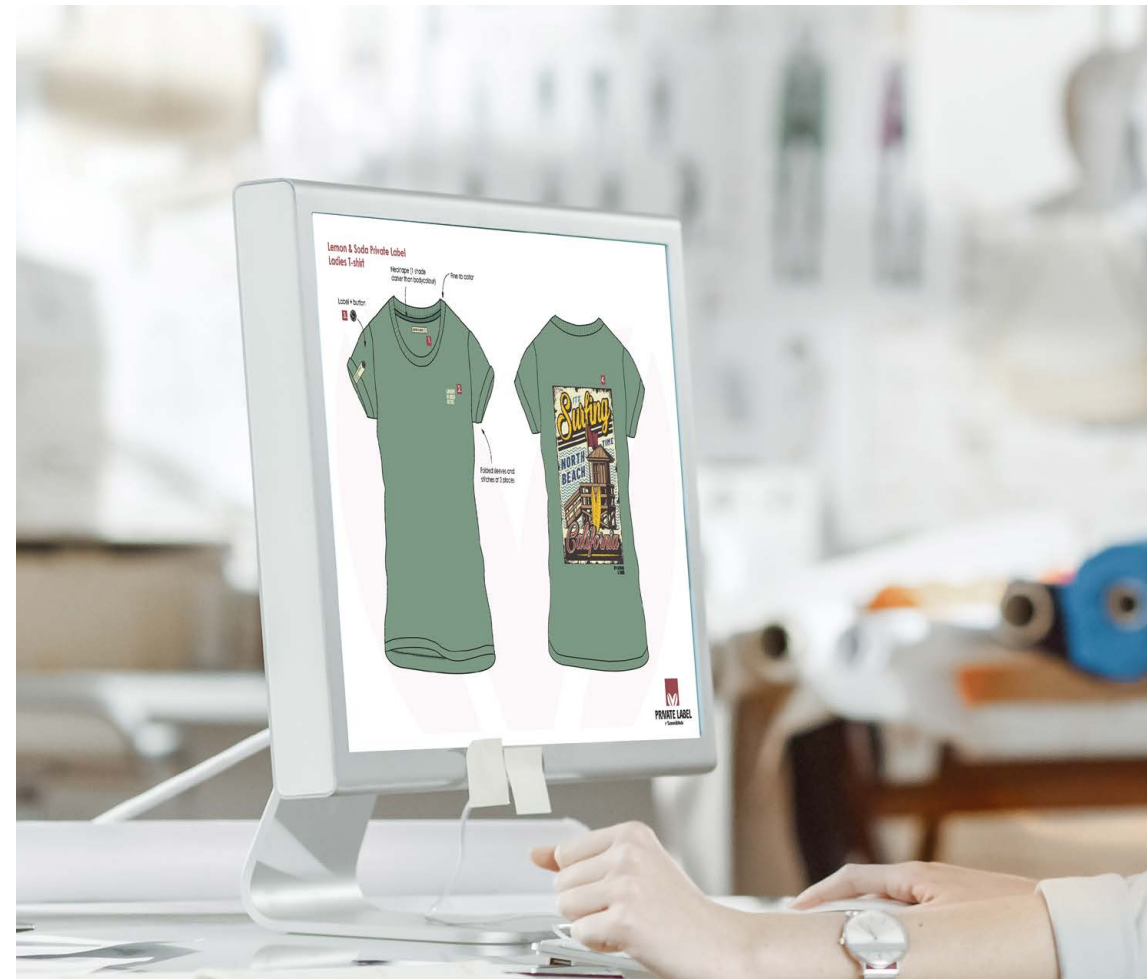
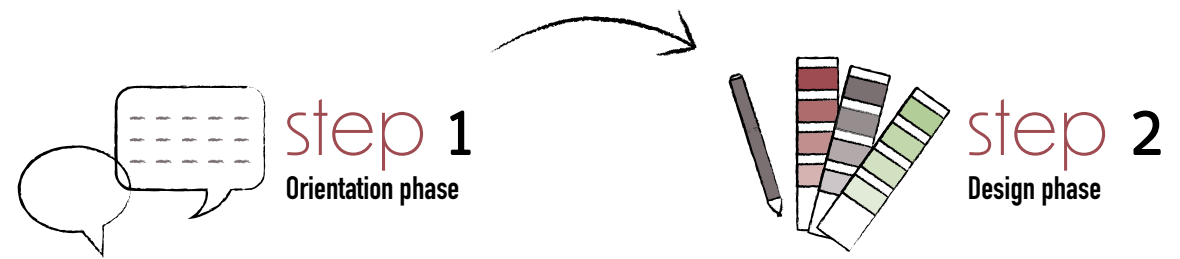
why?  
the result is  
original and authentic

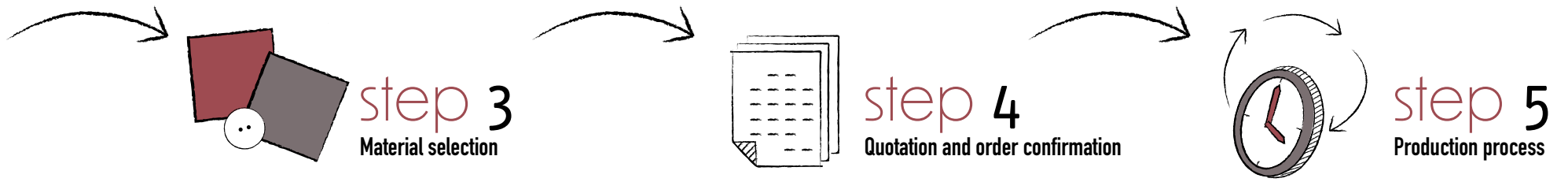
# your PRIVATE LABEL

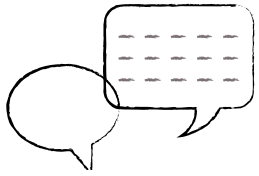
in 5 steps

Private label is of added value when you:

- Have your own vision on promotional and corporate clothing
- Want to customize an existing item
- Wants to put your own twist on an article
- Want to integrate your company's corporate identity more fully
- Wants to radiate exactly what your company stands for





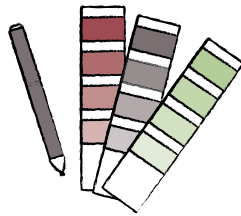


## step 1

### Orientation phase

The process starts with an initial conversation between you as a customer and our team of designers. We delve deeper into the wishes and needs for your custom made clothing. We listen carefully to your ideas and ask questions to get a clear picture. We discuss which models and colors you have in mind and whether there are preferences for certain operations.

You or the end customer may also provide a model. Of course we can also make these.

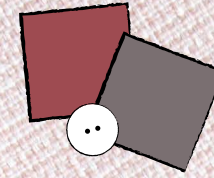


## step 2

### Design phase

Based on the information we have collected during the orientation phase, we will start creating the first designs for your private label clothing line. We make sketches to visualize the different styles and designs. We then present these to you and discuss any adjustments.

unique designs and  
technical expertise  
come together  
at Private Label

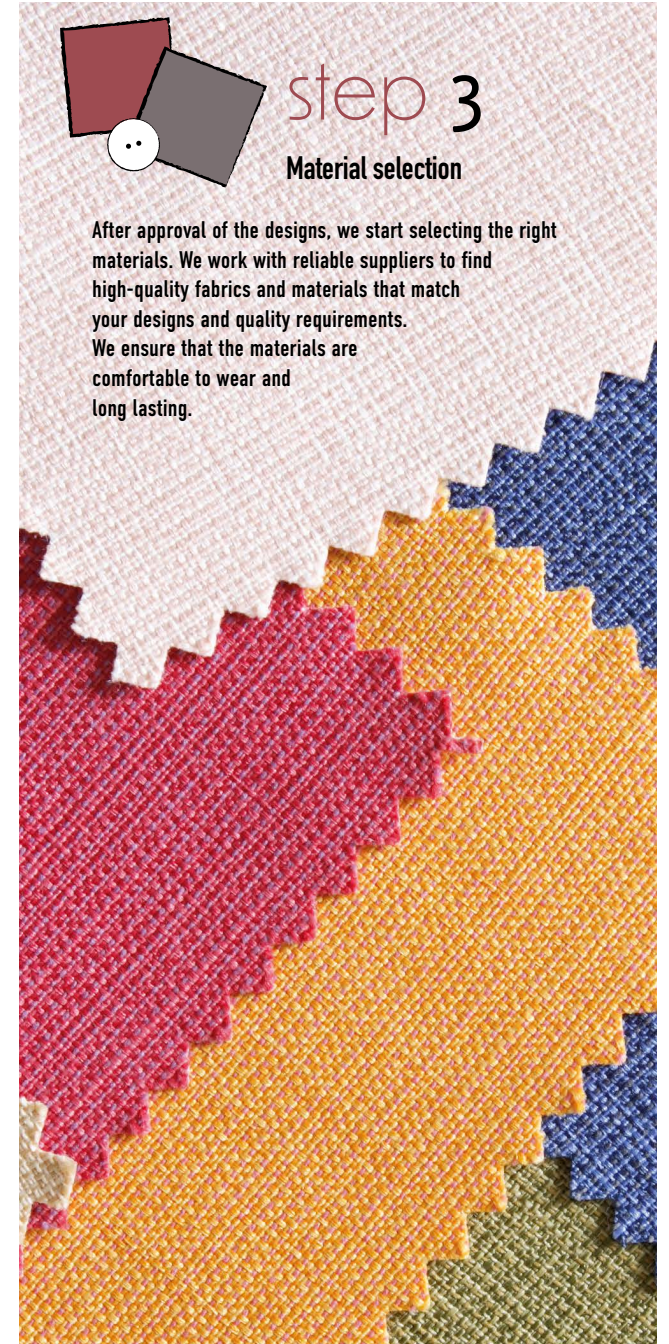


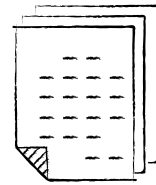
## step 3

### Material selection

After approval of the designs, we start selecting the right materials. We work with reliable suppliers to find high-quality fabrics and materials that match your designs and quality requirements. We ensure that the materials are comfortable to wear and long lasting.

with your corporate identity vision  
as a basis, we can provide even  
better advice



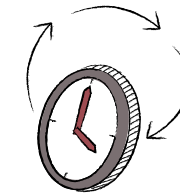


## step 4

### Quotation and order confirmation

After the materials have been chosen, the price is requested. This is supplied in a quotation, which once again includes all previously discussed and chosen details, such as the composition, operations and delivery time. If there are any adjustments, no problem, they can still be processed. As soon as the quotation has been approved and the size distribution is known, everything is worked out in detail in the order confirmation. After approval of the order confirmation, the production process starts.

everything is worked out down to the smallest detail



## step 5

### Production process

Now that the order confirmation has been approved, we can start the production process of the private label clothing line. We work together with experienced manufacturers who specialize in producing tailor-made garments. First come the lab dips to determine the correct color. After the color has been selected, the fabric is knitted or woven and then dyed. You will then receive any print, embroidery or other branded accessories for approval.

Then follows the pre-production sample. Everything that has already been approved in parts comes together here. It is the right fabric quality, in the right color, with the right fit and with all approved treatments and accessories. It is, as it were, the first and final product from the production line. As soon as this has been approved, production will start.

We are in constant contact with you and the manufacturers to ensure that production goes according to plan and quality is guaranteed.



Private Label by Lemon & Soda  
Unisex Hooded Sweater

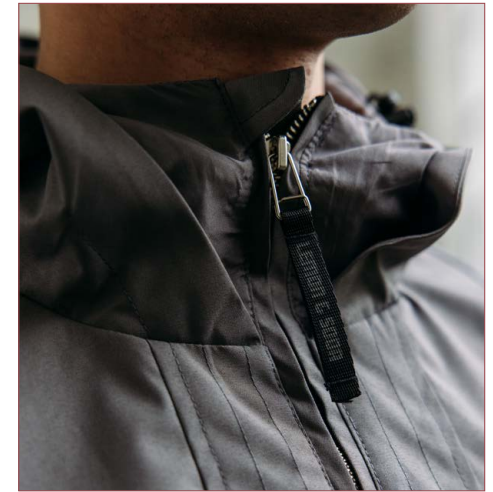




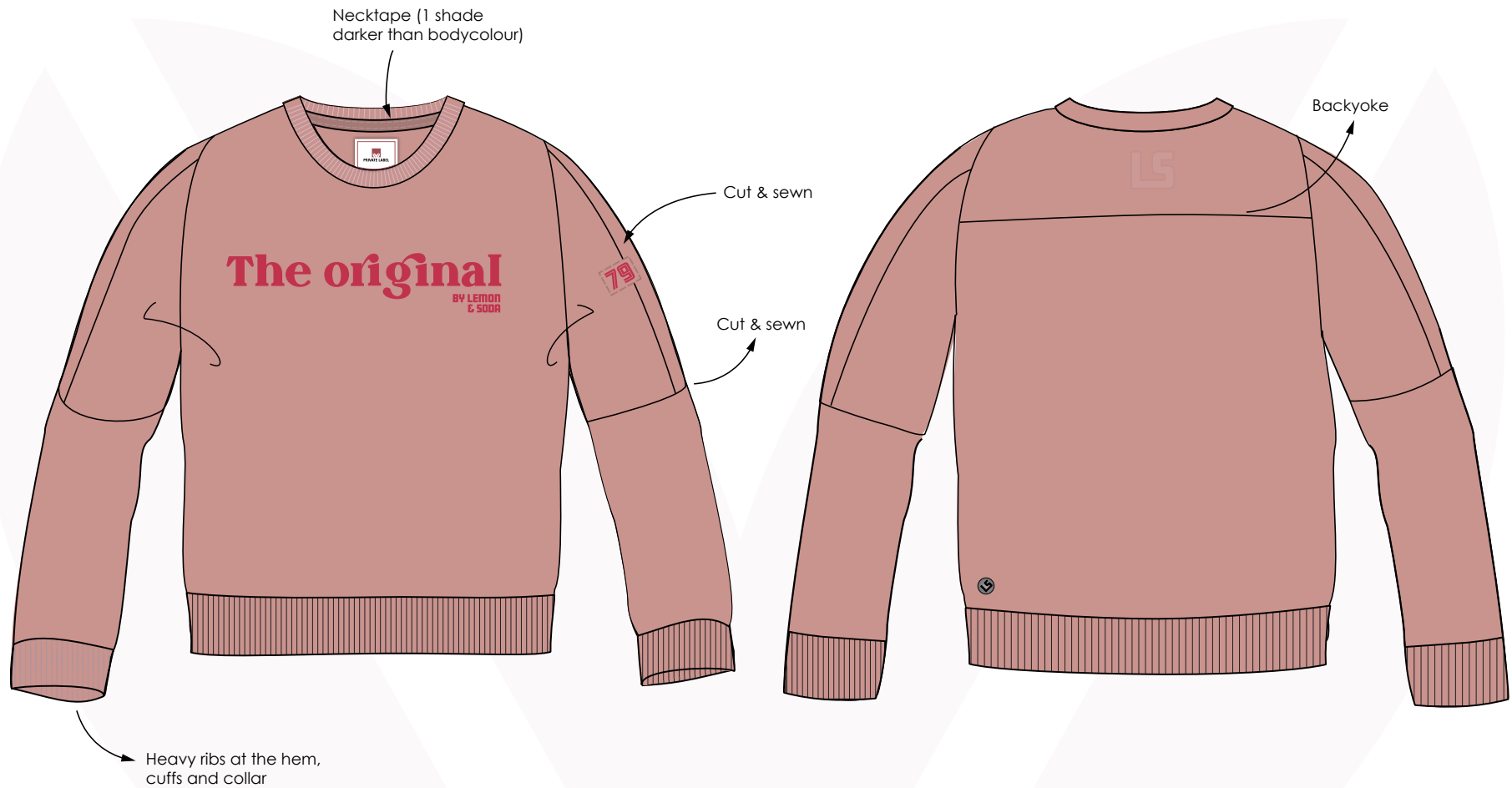




# accessories & decorations

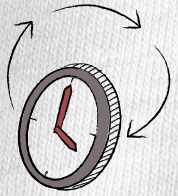


**Lemon & Soda Private Label  
Unisex Crewneck Sweater**

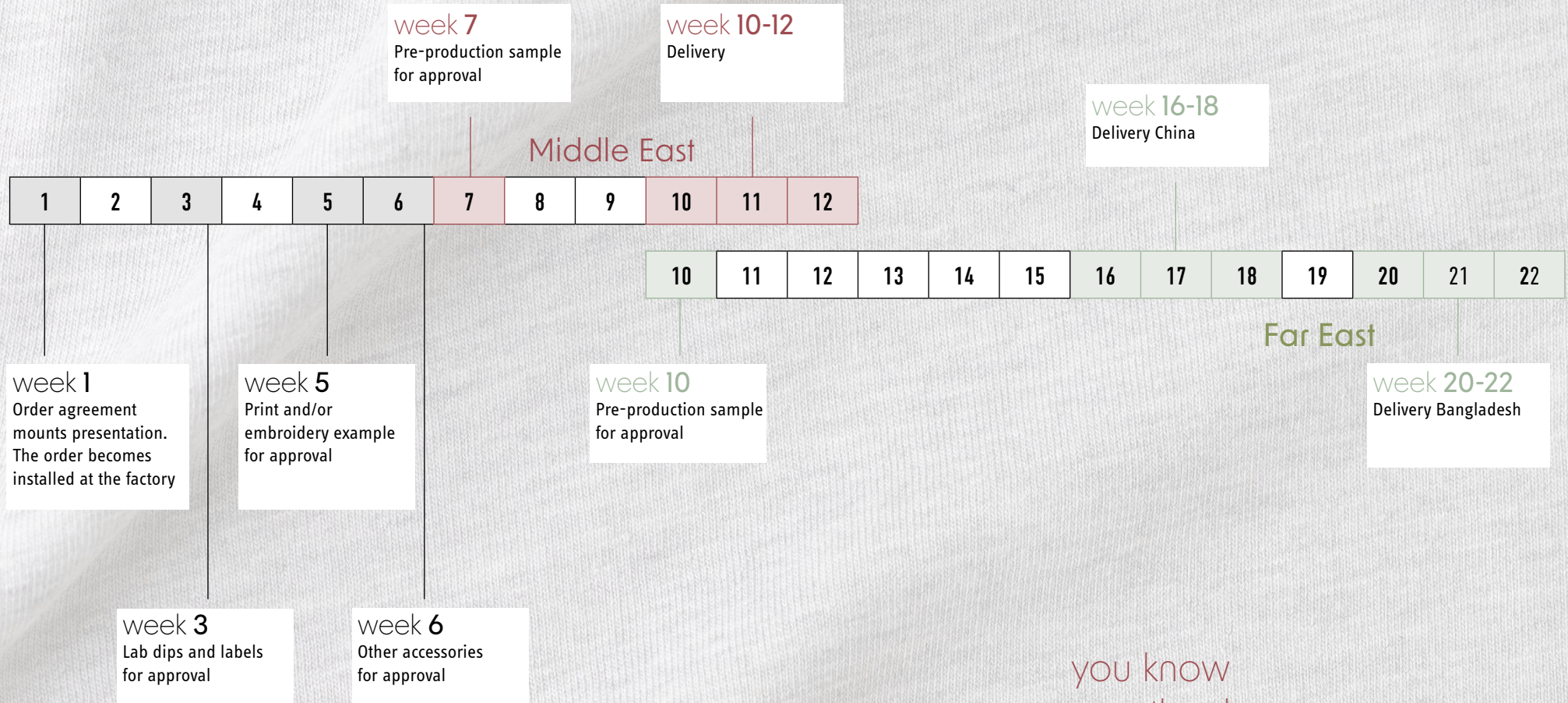




# PRIVATE LABEL



## delivery schedule in week numbers\*



you know  
exactly where  
you stand

\*These week numbers are indicative



### Quality control and delivery

Before the clothing is shipped, we subject the products to strict quality control to ensure that each item meets the highest standards. We pay attention to matters such as correct sizing, sturdy stitching and good finishing. After this check, the garments will be sent to you.

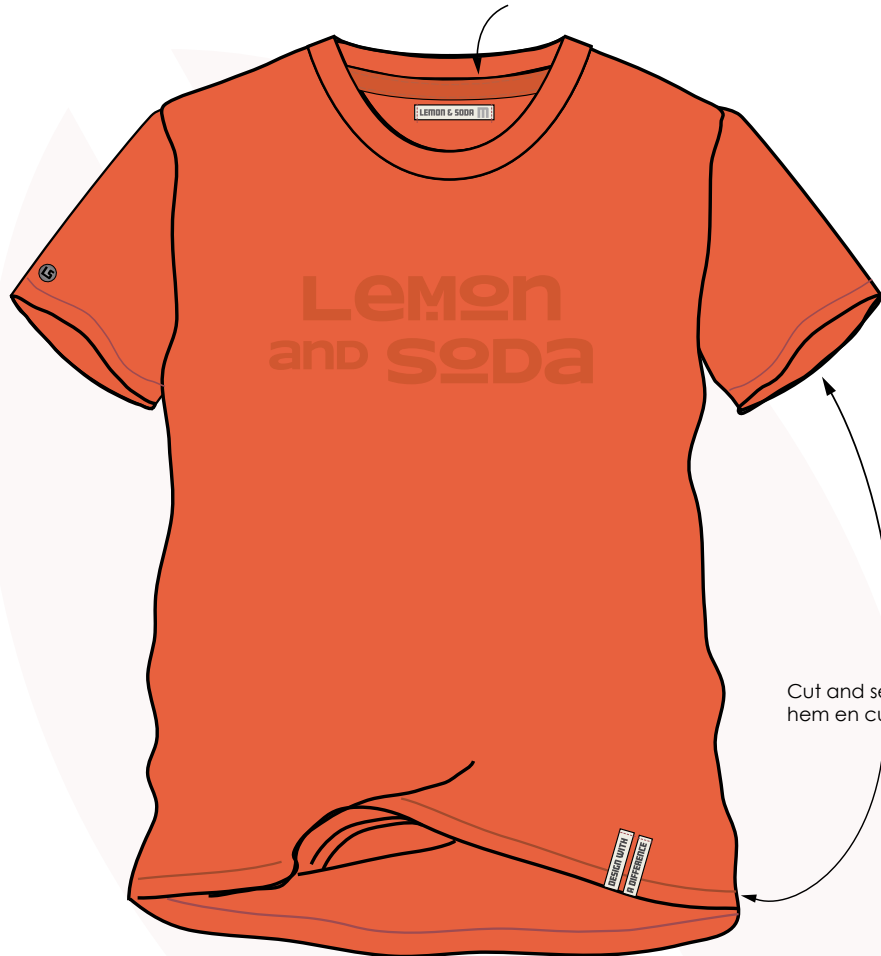
### Support after extradition

For us, the process does not end with the delivery of the garments. We also offer post-delivery support to ensure you are happy with the end result. We are ready to answer questions and help with any problems. We strive to build a long-term partnership and make your private label collection successful.

With the Private Label by Lemon & Soda you are assured of high quality, unique designs and excellent service. Together we create a clothing line that fits your identity and brand values. Contact us and discover the many possibilities for your own private label clothing line.

## Lemon & Soda Private Label Men T-shirt

Necktape  
1 shade darker  
than bodycolour



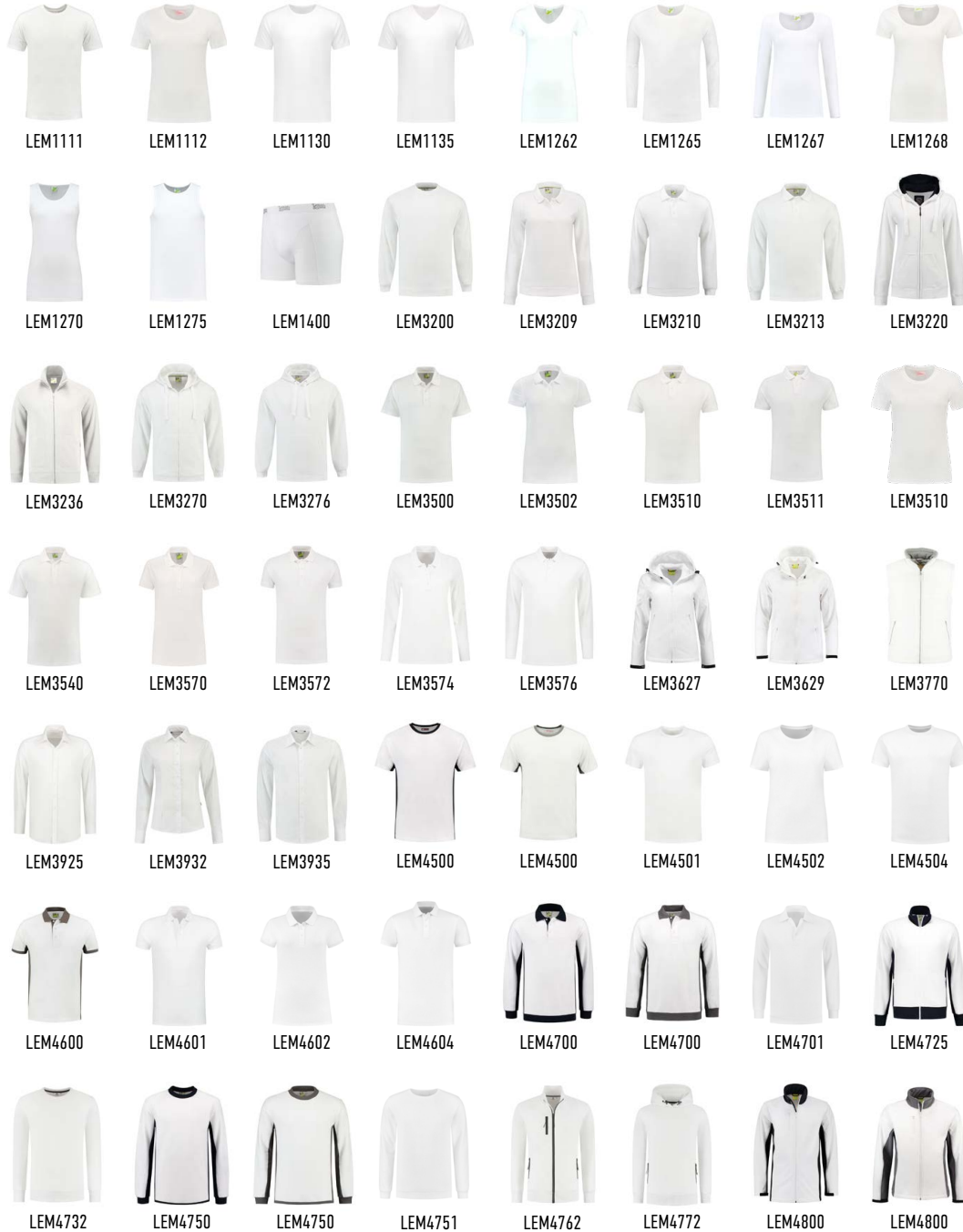
Cut and sewn  
hem en cuff



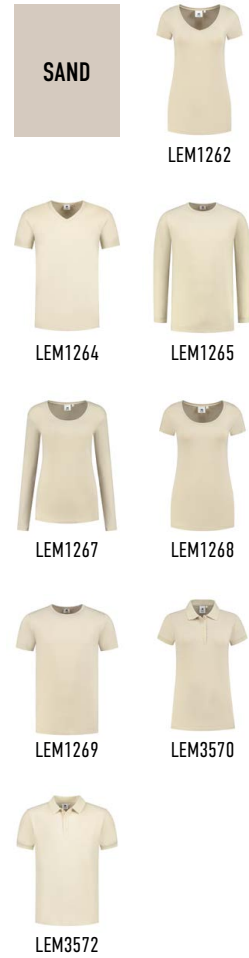


# COLOUR CHART

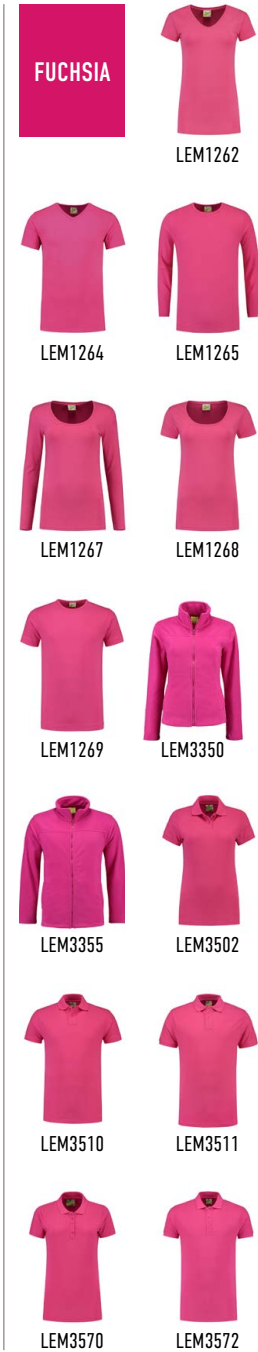
**WHITE**



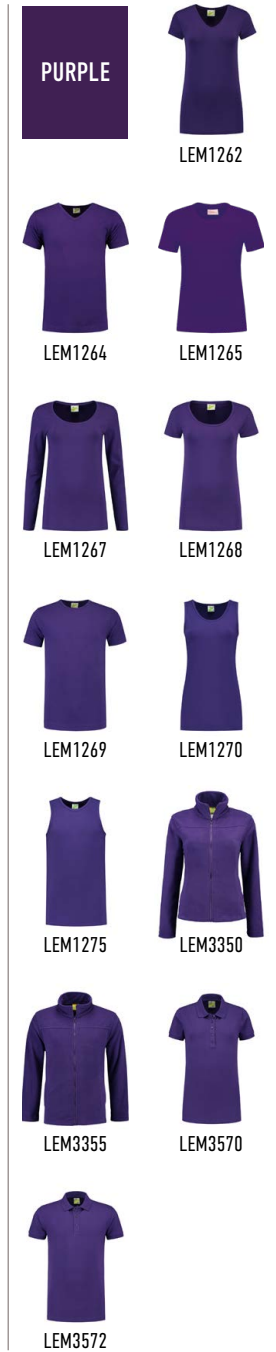
**SAND**



**FUCHSIA**



**PURPLE**



**YELLOW**



**LEMON**





# COLOUR CHART

ORANGE



LEM1111 LEM1112 LEM1262 LEM1264



LEM1265 LEM1267 LEM1268 LEM1269 LEM1270



LEM1275 LEM1400 LEM3200 LEM3209 LEM3210



LEM3236 LEM3350 LEM3355 LEM3502 LEM3503



LEM3505 LEM3505 LEM3510 LEM3511 LEM3535



LEM3540 LEM3570 LEM3572 LEM3627 LEM3629

RED



LEM1111 LEM1112 LEM1262 LEM1264 LEM1265



LEM1267 LEM1268 LEM1269 LEM1270 LEM1275 LEM3200



LEM3209 LEM3210 LEM3213 LEM3231 LEM3236 LEM3270



LEM3276 LEM3350 LEM3355 LEM3500 LEM3502 LEM3510



LEM3511 LEM3535 LEM3540 LEM3570 LEM3572 LEM3574



LEM3576 LEM3627 LEM3629 LEM3770 LEM3932 LEM3935



LEM4500 LEM4600 LEM4700 LEM4725 LEM4750 LEM4800

LIGHT BLUE

TURQUOISE



LEM1262 LEM1264



LEM3923 LEM1264 LEM1265 LEM1267



LEM3925 LEM1268 LEM1269 LEM1270



LEM3932 LEM3200 LEM3210 LEM3350



LEM3935 LEM3355 LEM3570 LEM3572

PETROL



LEM3923 LEM3925

# COLOUR CHART

ROYAL  
BLUE



LEM1111



LEM1112



LEM1262



LEM1264



LEM1265



LEM1267



LEM1268



LEM1269



LEM1270



LEM1275



LEM1111



LEM3200



LEM3209



LEM3210



LEM3213



LEM3220



LEM3225



LEM3231



LEM3236



LEM3270



LEM3276



LEM3350



LEM3355



LEM3500



LEM3502



LEM3510



LEM3511



LEM3535



LEM3540



LEM3570



LEM3572



LEM3574



LEM3576



LEM3627



LEM3629



LEM3770



LEM3932



LEM3935



LEM4500



LEM4502



LEM4504



LEM4600



LEM4602



LEM4604



LEM4700



LEM4725



LEM4732



LEM4750



LEM4762



LEM4772



LEM4800

DARK  
NAVY



LEM1111



LEM1112



LEM1130



LEM1135



LEM1262



LEM1264



LEM1267



LEM1268



LEM1270



LEM1275



LEM1400



LEM3200



LEM3209



LEM3213



LEM3220



LEM3225



LEM3227



LEM3229



LEM3231



LEM3232



LEM3236



LEM3270



LEM3276



LEM3350



LEM3355



LEM3500



LEM3502



LEM3511



LEM3535



LEM3540



LEM3570



LEM3572



LEM3574



LEM3576



LEM3629



LEM3770



LEM3923



LEM3925



LEM3932



LEM3935



LEM4500



LEM4600



LEM4601



LEM4700



LEM4701



LEM4725



LEM4750



LEM4751



LEM1265



MIDNIGHT BLUE



LEM4502



LEM3210



LEM4504



LEM4602



LEM3234



LEM4604



LEM4732



LEM3510



LEM4762



LEM4772



LEM3627



LEM4827



LEM4829



LEM4501



LEM4855



LEM4800



LIME



LEM1111



LEM1112



LEM1262



LEM1264



LEM1265



LEM1267



LEM1268



LEM1269



LEM1270



LEM1275



LEM1400



LEM3200



LEM3209



LEM3210



LEM3236



LEM3250



LEM3255



LEM3510



LEM3511



LEM3532



LEM3535



LEM3570



LEM3572



LEM3627



LEM3629



ARMY GREEN



LEM1262



LEM1264



LEM1265



LEM1267



LEM1268



LEM1269



LEM3570



LEM3572



FOREST GREEN



LEM1111



LEM1112



LEM3200



LEM3209



LEM3210



LEM3213



LEM3231



LEM3500



LEM3535



LEM3540



LEM4500



LEM4600



LEM4700



LEM4725



LEM4750



LEM4800



SOFT GREY



LEM3923



LEM3925

# COLOUR CHART

GREY  
HEATHER



LEM1111 LEM1112 LEM1130 LEM1135



LEM1262 LEM1264 LEM1265 LEM1267 LEM1268



LEM1269 LEM1270 LEM1275 LEM3200 LEM3209



LEM3210 LEM3213 LEM3220 LEM3225 LEM3227



LEM3229 LEM3231 LEM3232 LEM3234 LEM3236



LEM3270 LEM3276 LEM3511 LEM3540 LEM3570



LEM3572 LEM3574 LEM3576

PEARL  
GREY



LEM1111 LEM1112 LEM1262 LEM1264 LEM1265



LEM1267 LEM1268 LEM1269 LEM1270 LEM1275 LEM1400



LEM3200 LEM3209 LEM3210 LEM3213 LEM3231 LEM3236



LEM3350 LEM3355 LEM3500 LEM3502 LEM3511 LEM3540



LEM3570 LEM3572 LEM3627 LEM3629 LEM3770 LEM3932



LEM3935 LEM4500 LEM4501 LEM4600 LEM4601 LEM4700



LEM4701 LEM4725 LEM4750 LEM4751 LEM4800

DARK  
GREY



LEM1111 LEM1112 LEM1130



LEM1264 LEM1265 LEM1267 LEM1268



LEM3229 LEM3232 LEM3234 LEM3236



LEM3572 LEM3574 LEM3576 LEM3627



LEM4502 LEM4504 LEM4601 LEM4602



LEM4732 LEM4751 LEM4762 LEM4772





LEM4855

# COLOUR CHART

 LEM1135	 LEM1262	 ANTHRACITE	 BLACK	 LEM1111	 LEM1112	 LEM1130	 LEM1135	 LEM1262	 LEM1264	 LEM1265	 LEM1267	 LEM1268	 LEM1269	 LEM1270
 LEM1269	 LEM3227	 LEM3200	 LEM1275	 LEM1400	 LEM3200	 LEM3209	 LEM3210	 LEM3213	 LEM3220	 LEM3225	 LEM3227	 LEM3229	 LEM3231	 LEM3232
 LEM3510	 LEM3570	 LEM3209	 LEM3234	 LEM3236	 LEM3270	 LEM3276	 LEM3350	 LEM3355	 LEM3500	 LEM3502	 LEM3510	 LEM3511	 LEM3535	 LEM3540
 LEM3629	 LEM4501	 LEM3210	 LEM3570	 LEM3572	 LEM3574	 LEM3576	 LEM3627	 LEM3629	 LEM3770	 LEM3923	 LEM3925	 LEM3932	 LEM3935	 LEM4500
 LEM4604	 LEM4701	 LEM3231	 LEM4500	 LEM4500	 LEM4501	 LEM4502	 LEM4504	 LEM4600	 LEM4600	 LEM4600	 LEM4601	 LEM4602	 LEM4604	 LEM4700
 LEM4827	 LEM4829		 LEM4700	 LEM4700	 LEM4701	 LEM4725	 LEM4725	 LEM4725	 LEM4732	 LEM4750	 LEM4750	 LEM4750	 LEM4751	 LEM4762
			 LEM4772	 LEM4800	 LEM4800	 LEM4800	 LEM4800	 LEM4855						

# COLOUR CHART

						
White [WH]	Sand [SA] PMS 7528C	Yellow [YE] PMS 108C	Orange [OR] PMS 021C	Fuchsia [FU] PMS 214C	Red [RD] PMS 187C	Purple [PU] PMS 2627C
						
Light Blue [LB] PMS 278C	Turquoise [TQ] PMS 313C	Petrol [PT] PMS 2167C	Royal Blue [RB] PMS 2748C	Midnight Blue [MB] PMS 533C	Dark Navy [DY/NY] PMS296C	Lemon [LE] PMS 389C
						
Lime [LI/LM] PMS 376C	Army Green [AG] PMS 5615C	Forest Green [FG] PMS 214C	Soft Grey [SG] PMS 422C	Pearl Grey [PG] PMS 424C	Dark Grey [DG] PMS 432C	Black [BK] PMS 214C

	
Orange Flag	Orange F1











## DENIM COLORS

		
Light Blue Denim [LBD]	Blue Denim [BD]	Dark Blue Denim [DBD]

## HEATHER COLORS

				
Grey Heather [GY]	Heather Orange [HOR]	Heather Red [HRD]	Cardinal Heather [CH]	Heather Light Blue [HLB]
				
Royal Blue Heather [RH]	Heather Navy [NH]	Forest Green Heather [FH]	Anthracite [AN]	Heather Black [HBK]

## CONTRAST COLORS

				
White/ Dark Navy	White/ Pearl Grey	Red/ Black	Royal Blue/ Black	Dark Navy/ Pearl Grey
				
Forest Green/Black	Pearl Grey/ Black	Black/ Orange	Black/ Lime	Black/ Pearl Grey



# BACK TO SCHOOL

Back to School Project Bangladesh has a very good network of schools at all levels. Children can receive education at very little or no cost. Yet there are families who do not see the opportunities that education offers. They focus on short-term profits and allow children to drop out of school to work in the household or on the farm. That is why Lemon & Soda founded the Back to School Project together with a manufacturer in 2007.



## Change the future

The local manual recognized extreme poverty in his village of Gonopaddi, an agro-based and underdeveloped district on India's electronic border. Most children in this region are drop-out students. Many families do not have enough to eat. The lack of education leads to this poverty because they cannot sustain themselves in the long run. Help was needed to change the social and economic situation.

## Stimulating children's potential

The Back to School Project noticed these problems and created a program aimed at dropout students. The philosophy of the program is to transform each child into their own change agent. It is not limited to learning; it is also aimed at boosting one's potential. Good practice, helping others and living a healthy life are all part of the project. The goal is to instill self-esteem and value of education in children so that they can influence the economic scenario and engage in social welfare. The Back to School Project has started a huge development; some group 1 students who started the program ten years ago are now studying at the university. These original school leavers aspire to become doctors, engineers, ministers or parliamentarians rather than work in the household or on the farm.

## Success of the project

The first year of the Back to School Project started with twenty students with only two teachers. Unlike mainstream schools, there were incentives to go to school: free eggs and biscuits and extracurricular activities to develop other social and cultural skills. They also received soap and toothpaste for health and hygiene. Because of the great results, more and more students wanted to participate and today

there are more than 200 students, 20 teachers and computer training programs for the basic courses. Students up to and including class 4 are taught by students of the higher class. Pupils from group 5 come to the main building to attend lectures given by regular teachers.

## Make your own change

Together with the manufacturer, Lemon & Soda helps these children to transfer money themselves. Today there are no real school leavers in Gonopaddi and all children are included in the Back to School Project. They have become their own change agents with the ability to transform the Sherpur district for a brighter future.



In the poverty-stricken village of Gonopaddi, most students learn English by memorizing exercises from their textbooks. After twelve years, most of them still cannot understand and read English. The Back to School English Club was established to help these students – ranging from grades six to grades eleven – develop the English language. Two months after the start of the club, the students have let go of their fears and are fully committed to learning English, driven by their enthusiasm to overcome illiteracy.

### Goals of the initiative

- Improve students' understanding and communication skills in English.
- Improve their ability to network.
- Develop leadership qualities in students.
- Progression students in the field of technology.

## CAREGUIDE



We care about the garments that we produce, so we choose our materials very carefully. Follow the instructions on the care label to enjoy these garments even more!

## Washing tips

- Always read and follow the care label
- Read and follow the instructions on your detergent pack
- Use the recommended amount
- Polar fleece and sweats can best be washed before wearing
- Wash inside out
- Close zippers before washing
- Sort laundry by temperature in care label, 40 °C, 60 °C etc.
- Wash dark colours separate
- Don't iron on decorations
- Always wash a full load
- Pre-washing is not needed for most garments
- If you have a condenser dryer, reuse the water – it's great in irons

## Washing &amp; the environment

Washing and drying at home represents 75% of the energy used in a garment's life cycle, so it really is an area where you have an impact on the environment. For the best cleaning, we recommend washing your clothes at the temperature indicated on the care label. Often a piece of clothing only needs to be refreshed instead of cleaned and washing at 30°C is fine. Natural line drying reduces the amount of energy used in the aftercare process. However, it is not always practical and that is why many people use tumble dryers. When purchasing a dryer, think about a good energy classification so that you use the energy in the most efficient way.







# LEMON & SODA AND SUSTAINABILITY

The Lemon & Soda catalog has been a well-known and major player in the promotional market for many years. In the coming years, with a view to sustainability, we will also be clearly visible online in addition to the catalogue.

This Lemon & Soda catalog is printed on FSC certified paper. This environmental certificate fits within our philosophy of taking responsibility as a company for our role within society and the living environment.

Lemon & Soda focuses on economic, social and living environment needs. Sustainability is an important pillar of the articles for Lemon & Soda. Our products are tested for longevity. The origin of materials is transparent and origin and fair working conditions are taken into account.

But it's not just our products where we implement sustainability. It also continues within business operations. Our aim is to install solar panels on the business premises by 2024. Since last year, there have been charging stations in front of the building for electric cars and we use green energy.

Lemon & Soda has its own large distribution center where used plastic is collected and recycled. Cardboard is reused and our employees think about the use of non-reusable materials.

Since 2023, Lemon & Soda has been affiliated with Stichting UPV Textiel. This foundation was established in response to the Decision on Extended Producer Responsibility (UPV Textiel) in the Netherlands, which holds importers and textile producers accountable for collection, recycling, and reuse. Over 650 companies have joined this collective initiative, currently representing more than 70% of the market. The foundation collectively organizes the collection and processing of discarded textiles to efficiently, effectively, and affordably meet the UPV obligations.

Lemon & Soda is for a livable future and takes nature and people into account.

Article nr	Description	Page
<b>LEMON &amp; SODA</b>		
LEM1111	L&S iTee T-shirt unisex	5
LEM1112	L&S iTee T-shirt her	5
LEM1130	L&S Fine Cotton Elastane T-shirt unisex	7
LEM1135	L&S Fine Cotton Elastane V-neck T-shirt unisex	7
LEM1262	L&S Cotton Elastane V-neck T-shirt her	10
LEM1264	L&S Cotton Elastane V-neck T-shirt unisex	10
LEM1265	L&S Cotton Elastane T-shirt unisex	9
LEM1267	L&S Cotton Elastane T-shirt her	9
LEM1268	L&S Cotton Elastane T-shirt her	8
LEM1269	L&S Cotton Elastane T-shirt unisex	8
LEM1270	L&S Cotton Elastane Tanktop her	11
LEM1275	L&S Cotton Elastane Tanktop unisex	11
LEM1400	L&S Boxershort unisex	55
LEM3200	L&S Sweater unisex	38
LEM3209	L&S Polosweater her	39
LEM3210	L&S Polosweater unisex	39
LEM3213	L&S Polosweater with open hem unisex	40
LEM3220	L&S Heavysweat Hooded Cardigan her	31
LEM3225	L&S Heavysweat Hooded Cardigan unisex	31
LEM3227	L&S Heavysweat Raglan Sweater her	32
LEM3229	L&S Heavysweat Raglan Sweater unisex	32
LEM3231	L&S Zipsweater unisex	40
LEM3232	L&S Heavysweat Hooded Raglan Sweater her	33
LEM3234	L&S Heavysweat Hooded Raglan Sweater unisex	33
LEM3236	L&S Cardigan unisex	38
LEM3270	L&S Hooded Cardigan unisex	41
LEM3276	L&S Hooded Sweater unisex	41
LEM3350	L&S Polar Fleece Cardigan her	47
LEM3355	L&S Polar Fleece Cardigan unisex	47

LEM3500	L&S Basic Mix Polo unisex	27
LEM3502	L&S Basic Mix Polo her	27
LEM3503	L&S Flag Polo her	28
LEM3505	L&S Flag Polo unisex	28
LEM3510	L&S Fit Polo unisex	24
LEM3511	L&S Heavy Mix Fit Polo unisex	26
LEM3535	L&S Basic Polo her	25
LEM3540	L&S Basic Polo unisex	25
LEM3550	L&S Heather Mix Fit Polo her	19
LEM3552	L&S Heather Mix Fit Polo unisex	19
LEM3570	L&S Basic Cotton Elastane Polo her	20
LEM3572	L&S Basic Cotton Elastane Polo unisex	20
LEM3574	L&S Basic Cotton Elastane Polo her	21
LEM3576	L&S Basic Cotton Elastane Polo unisex	21
LEM3610	L&S Micro fleece spandex Hooded Jacket unisex	51
LEM3627	L&S Softshell Hooded Jacket her	48
LEM3629	L&S Softshell Hooded Jacket unisex	48
LEM3770	L&S Bodywarmer unisex	50
LEM3923	L&S Stretch Poly-Cotton Mix Poplin Shirt her	44
LEM3925	L&S Stretch Poly-Cotton Mix Poplin Shirt unisex	44
LEM3932	L&S Poly-Cotton Mix Poplin Shirt her	45
LEM3935	L&S Poly-Cotton Mix Poplin Shirt unisex	45
LEM3950	L&S Denim Shirt her	43
LEM3960	L&S Denim Shirt unisex	43
LEM4500	L&S Workwear Contrast T-shirt unisex	14
LEM4501	L&S Workwear Uni T-shirt unisex	14
LEM4502	L&S Workwear Cooldry T-shirt her	15
LEM4504	L&S Workwear Cooldry T-shirt unisex	15
LEM4600	L&S Workwear Contrast Polo unisex	23
LEM4601	L&S Workwear Uni Polo unisex	23
LEM4602	L&S Workwear Cooldry Polo her	22

LEM4604	L&S Workwear Cooldry Polo unisex	22
LEM4700	L&S Workwear Contrast Polosweater unisex	37
LEM4701	L&S Workwear Uni Polosweater unisex	34
LEM4725	L&S Workwear Contrast Cardigan unisex	36
LEM4732	L&S Crewneck Sweater Everywear Cooldry unisex	43
LEM4750	L&S Workwear Contrast Sweater unisex	37
LEM4751	L&S Workwear Uni Sweater unisex	34
LEM4762	L&S Sweat Cardigan Everywear Cooldry unisex	43
LEM4772	L&S Hooded Sweater Everywear Cooldry unisex	42
LEM4800	L&S Workwear Contrast Softshell Jacket unisex	50
LEM4827	L&S Workwear Everywear Softshell Jacket her	49
LEM4829	L&S Workwear Everywear Softshell Jacket unisex	49
LEM4855	L&S Winter Softshell Jacket Everywear unisex	53





**Lemon  
& Soda**

[WWW.LEMON-SODA.EU](http://WWW.LEMON-SODA.EU)