



LOOK  
BOOK  
2024



Stedman®  
collection

# ABOUT US

Est. 1953

Since 1953, the Stedman® brand stands for reliable product quality, excellent value for money and ethically responsible manufacturing conditions. Our 2024 collection includes a wide range of products for men, women and children, from basic T-shirts and sweatshirts in popular colours to functional sports and versatile outdoor clothing. This year's highlights include our brand-new Lux polo shirts (p. 62) and the expansion of our colour range (p. 11)!



04

QUALITY

06

HISTORY

09

NEW  
COLOURS

13

NEW  
STYLES

17

T-SHIRTS

52

UNDERWEAR

55

POLO  
SHIRTS

67

SWEATSHIRTS

79

SPORTS

101

FLEECE

111

JACKETS &  
VESTS

118

LAST  
CHANCE

124

COLOURS

126

FIBRES, YARNS &  
FABRICS

134

SIZES

136

PRINT &  
EMBROIDERY

138

INDEX

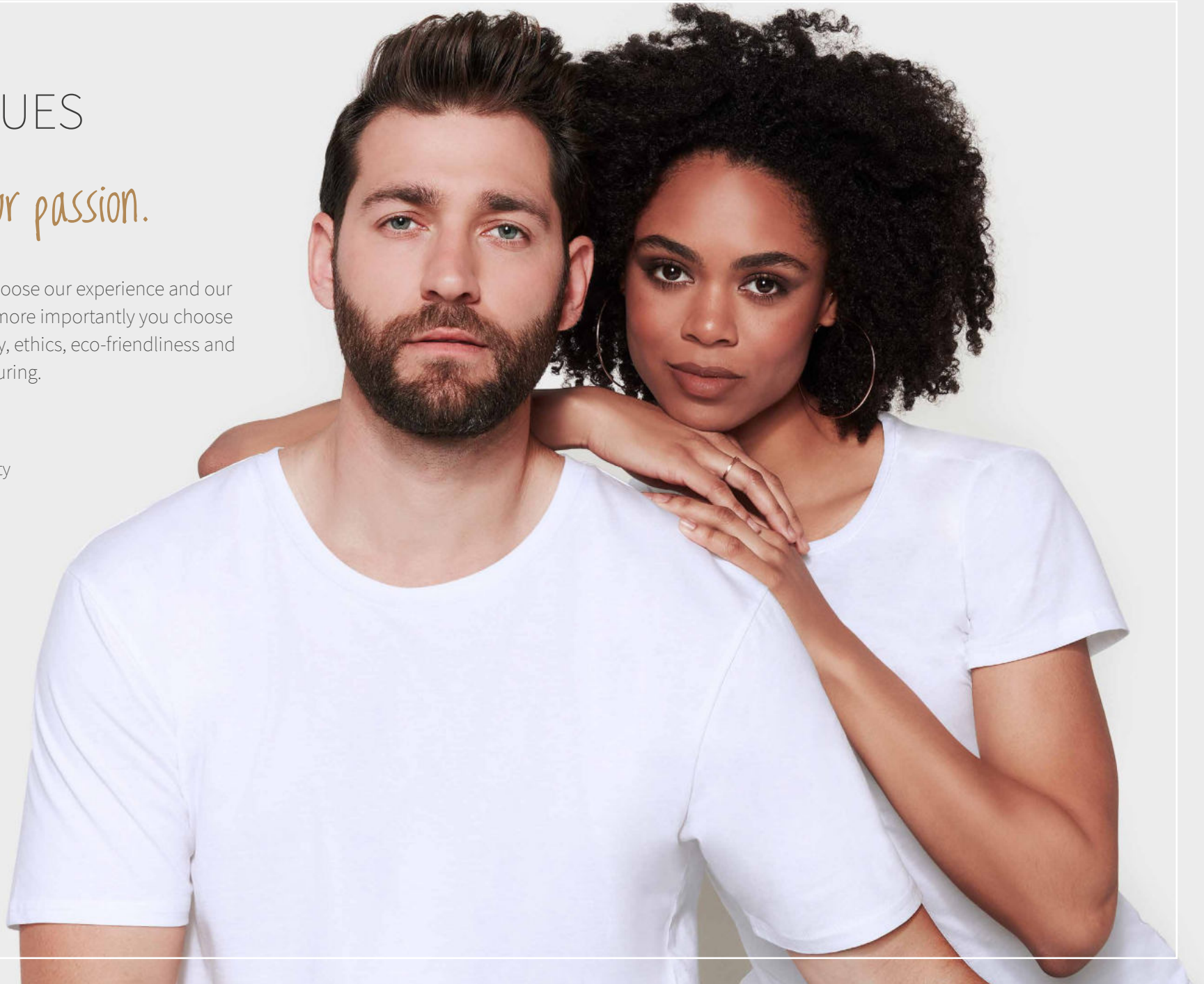


## OUR VALUES

*Quality is our passion.*

With Stedman® you choose our experience and our customer service but more importantly you choose our core values: quality, ethics, eco-friendliness and responsible manufacturing.

[stedman.eu/sustainability](https://stedman.eu/sustainability)







**STANDARD  
100**

### OEKO-TEX® STANDARD 100

Our textile articles and components have been tested for harmful substances and are therefore harmless for human health, assuring high product safety.



### ORGANIC CONTENT STANDARD

Stedman® is certified to the OCS, which verifies organically grown cotton and tracks it from the source to the final product.



### RECYCLED MATERIAL

Our sustainable polyester made from recycled plastic bottles offers high-quality characteristics but with a smaller environmental footprint, keeping plastics from going to landfills and our oceans.



### PETA - APPROVED VEGAN

We do not use animal products. Our clothing & accessories are made of vegan alternatives to animal-derived materials such as leather, fur, silk, feathers, or bone.



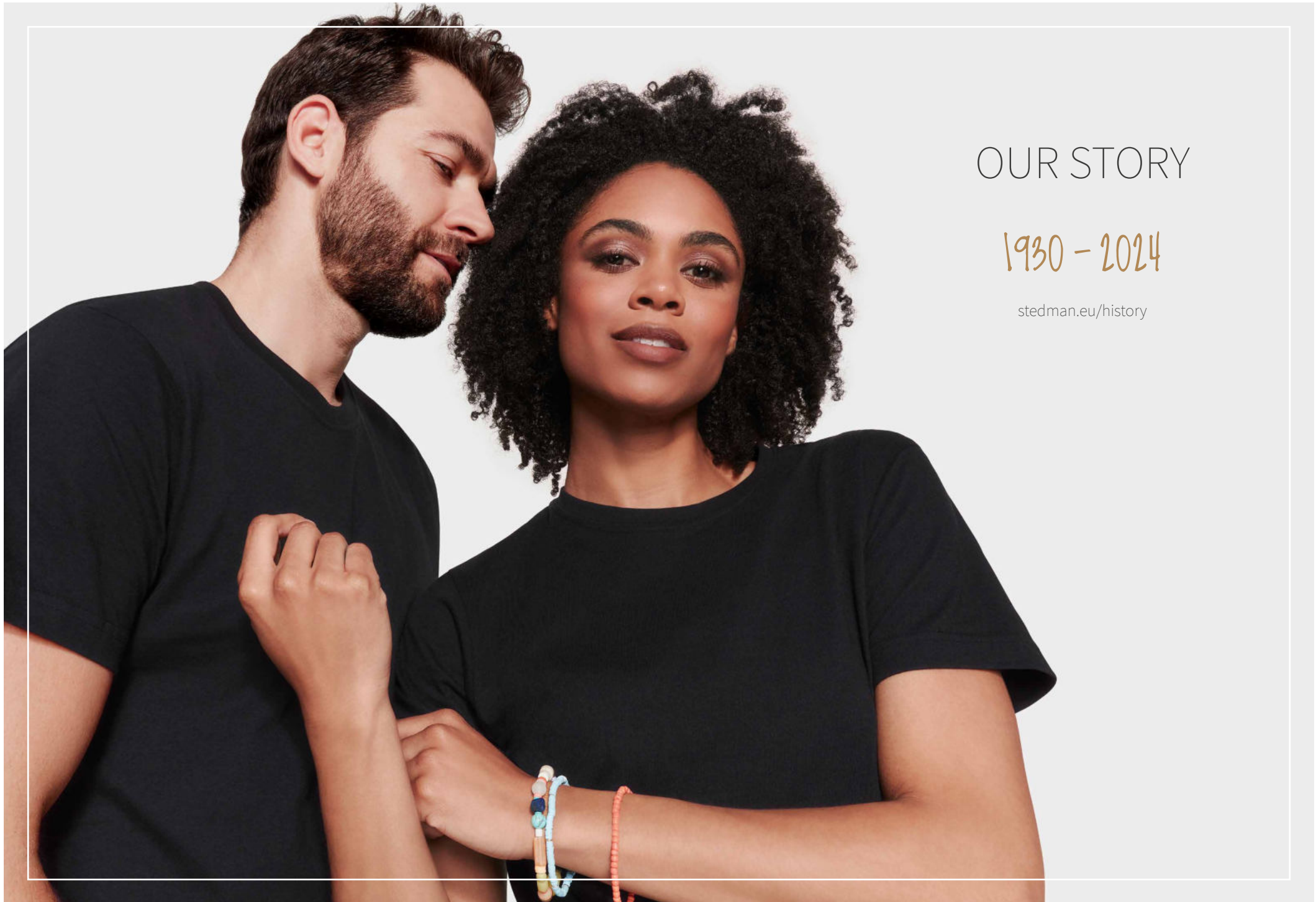
### STEDMAN® PROOFED QUALITY

All our articles are subject to strict quality controls. With our own quality management team on site, we ensure that our high demands on material and product properties are always met.



### AMFORI

Member of amfori, the leading global business association for open and sustainable trade. We improve the social performance of our supply chain via amfori BSCI.



# OUR STORY

1930 - 2024

[stedman.eu/history](https://stedman.eu/history)

## 1930

Asheboro, North Carolina, USA: Stedman® begins its textile business with cotton handkerchiefs in 1930.

## 1939

In 1939, the handkerchief operation is restructured during World War II to manufacture T-shirts for the United States Navy.

## 1950

In 1950 we are producing a full line of lightweight underwear for men and boys.

## 1953

A knit sportswear line is introduced in 1953. These T-shirts are made of durable yet soft and comfortable combed cotton.

With two plants in production, and employing approximately 200 people, our company grows into one of the best-known manufacturers of men's quality T-shirts in the country.

## 1968

In 1968 we own six production plants. Stedman® is a serious underwear and sportswear firm.

## 1970

Two years later Stedman® products are distributed from coast to coast and around the world. World-wide sales of Stedman® underwear and sportswear products are handled in the Stedman® New York office.

Operating warehouses are located in Asheboro, Texas, Oakland, Los Angeles and Honolulu.

## 1980

The Stedman Manufacturing Company is a tremendous success.

At the age of 60 William David Stedman decides to retire and sell his textile firm to the Sara Lee Corporation in 1980.

## 2001

Four basic products are introduced at the European market launch in Paris on September 18, 2001: Classic-T, Junior Classic-T, Comfort-T and Polo.

We are proud to say that these styles are still considered best-sellers in our collection to this day. Our product portfolio grows quickly as awareness of the brand increases.

## 2006

In 2006 Sara Lee sells its branded apparel business to its former subsidiary Hanesbrands.

Hanesbrands decides to pull their brand Hanes® out of the European markets in 2014 but Stedman® remains in Europe.

## 2023

Stedman® is teaming up with Next Level Apparel, a well-established American clothing company. In this promising partnership, the expertise of two renowned companies in the field of promotional apparel comes together to offer even higher-quality products and services.

## 2024

The current collection comprises 111 styles for men, women, children and toddlers: from T-shirts, polo shirts, sweatshirts and jackets up to fashionable sportswear.



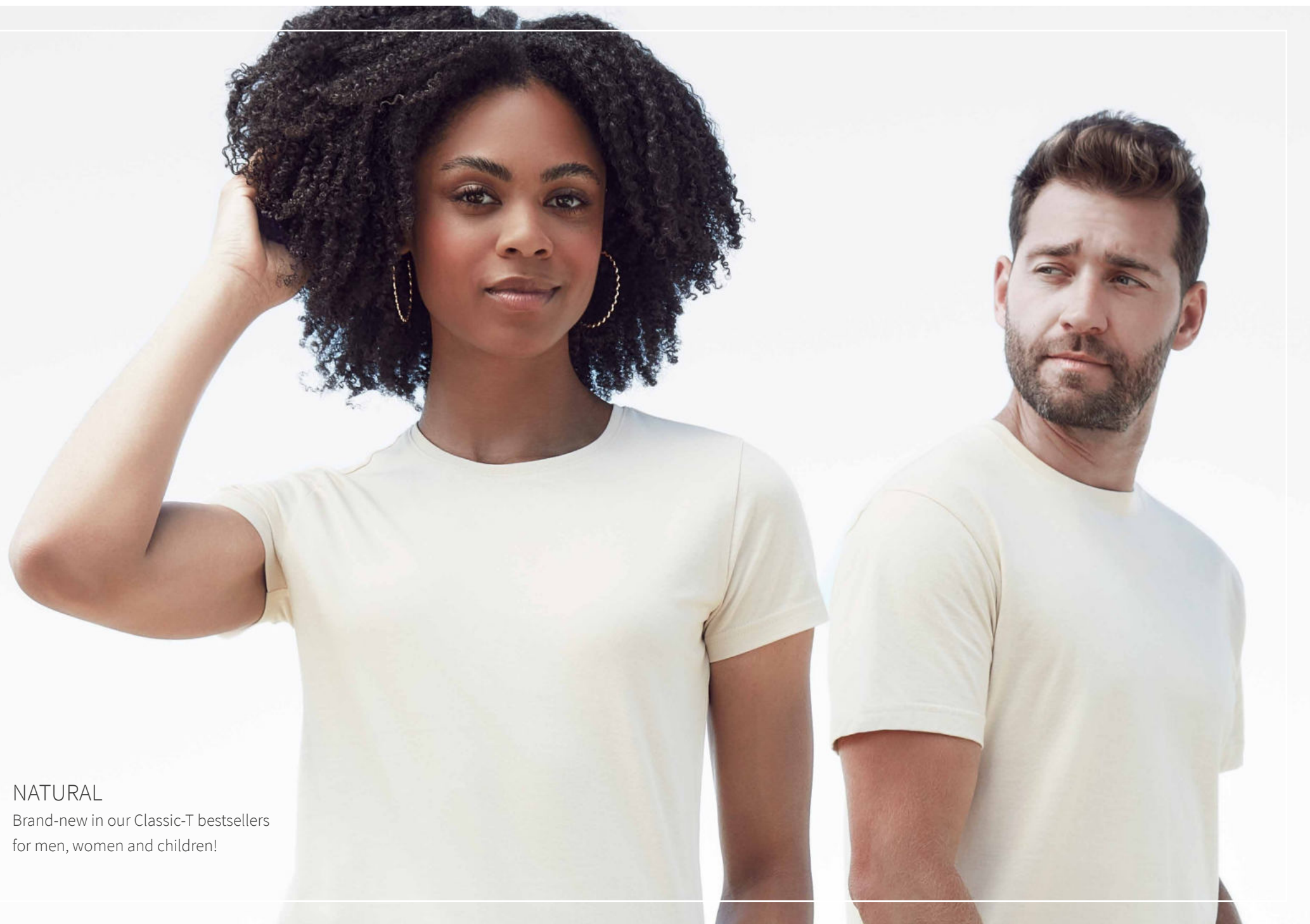


## MORE COLOURS, MORE SIZES

Collection 2024

Our new colour “Natural” exudes a sense of elegance and simplicity that effortlessly complements any style or occasion. Its earthy tone and subtle warmth evoke a feeling of connection to nature and bring a touch of tranquility to your wardrobe.

[stedman.eu/news](https://stedman.eu/news)



## NATURAL

Brand-new in our Classic-T bestsellers  
for men, women and children!



# NEW COLOUR

*elegant & simple*



Natural

Classic-T  
for men/women  
(XXS-3XL)  
for women  
(XS-XXL)  
for children  
(XS-XL)

# MORE COLOURS

*colour additions for existing styles*



Bright Royal

Comfort-T 185  
for men  
(S-5XL)



Grey Heather

Comfort-T 185  
for men  
(S-5XL)



Sweet Pink

Classic-T  
for men/women  
(XXS-3XL)



Marina Blue

Comfort-T 185  
for men  
(S-5XL)



Slate Grey

Comfort-T 185  
for men  
(S-5XL) | Classic-T  
for children  
(XS-XL)



Bordeaux

Classic-T  
for children  
(XS-XL)



Blue Midnight

Comfort-T 185  
for men  
(S-5XL)

Lux Softshell Jacket,  
Lux Padded Jacket &  
Lux Padded Vest  
for men  
(S-5XL)  
for women  
(XS-3XL)



Bottle Green

Classic-T  
for men/women  
(XXS-5XL)  
for women  
(XS-3XL)  
for children  
(XS-XL)

Comfort-T 185  
for men  
(S-5XL)



Scarlet Red

Clive & Claire  
Crew Neck,  
V-neck & Polo  
for men  
(S-3XL)  
for women  
(XS-XXL)

Comfort-T 185  
for men  
(S-5XL)



## NEW STYLES

### Lux Polo

Whether worn on the tennis court, in the office, or out for a casual weekend outing, the polo shirt remains a beloved and iconic piece of clothing that continues to stand the test of time. Find detailed information about our new Lux Polos on page 62.

[stedman.eu/news](https://stedman.eu/news)





## LUX POLO

Short sleeve polo shirt for men.



*Lux Collection*



LUX POLO



Short sleeve polo shirt for women.

*Lux Collection*





## T-SHIRTS & MORE

### Collection

T-shirts, V-necks, long sleeves and more made of high-quality ring-spun cotton. Ring-spun cotton T-shirts are significantly softer, more durable and last longer than their ordinary counterparts.

Our entire collection features tear-away tags in the collar or side seam for effortless personalization.

[stedman.eu/t-shirts](https://stedman.eu/t-shirts)





## Classic-T, 155g

ST2000 · XXS - 5XL · men/women

100% ring-spun cotton; single jersey  
Grey Heather: 85% cotton, 15% viscose

classic bestseller · high-quality  
ring-spun cotton · unisex style - great  
fit for men & women · regular shape

**Sizes 4-5XL only in:** White, Black Opal, Ash,  
Grey Heather, Slate Grey, Blue Midnight, Marina Blue,  
Navy Blue, Bottle Green, Bright Royal & Scarlet Red

- \* Unisex style
- \* Classic bestseller
- \* Family style

**Matching styles:** Classic-T Organic p. 22, Classic-T Fitted p. 21,  
Classic-T V-neck p. 38, Classic-T Long Sleeve p. 44

CLASSIC-T COLOURS  
ST2000 & ST2600



Classic-T, 155g

women · XS - 3XL · ST2600

100% ring-spun cotton; single jersey  
Grey Heather: 85% cotton, 15% viscose

classic bestseller · high-quality  
ring-spun cotton · side  
seams · regular shape

Size 3XL only in: White, Black Opal, Ash,  
Grey Heather, Slate Grey, Marina Blue, Blue Midnight,  
Navy Blue, Bottle Green, Bright Royal & Scarlet Red

\* Classic bestseller

Matching styles: Classic-T Organic p. 23



## Classic-T, 155g

ST2200 · 3XS - XL · children

100% ring-spun cotton; single jersey  
 Grey Heather: 85% cotton, 15% viscose

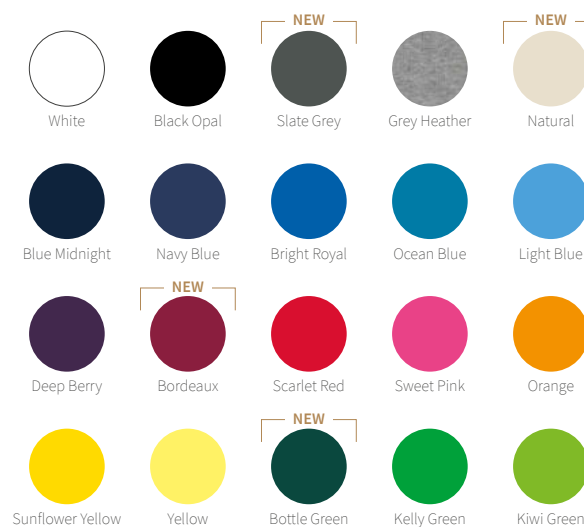
classic bestseller · large size range  
 from toddlers to teenagers · high-quality  
 ring-spun cotton · regular shape

Sizes 3-2XS only in: White, Black Opal, Navy Blue,  
 Bright Royal, Light Blue, Scarlet Red & Orange

- \* Classic bestseller
- \* Family style

Matching styles: Classic-T Organic p. 25

size	3XS	2XS	XS	S	M	L	XL
age	1-2	3-4	5-6	7-8	9-10	11-12	12-13
cm	86-92	98-104	110-116	122-128	134-140	146-152	158-164





## Classic-T Fitted, 155g

men · S - XXL · ST2010

100% ring-spun cotton; single jersey  
Grey Heather: 85% cotton, 15% viscose

classic bestseller ·  
high-quality ring-spun cotton ·  
fitted shape

\* Classic bestseller

Matching styles: Classic-T p. 18



White



Black Opal



Grey Heather



Real Grey



Deep Berry



Navy Blue



Bright Royal



Scarlet Red



Kiwi Green







## Classic-T Organic, 145g

ST2020 · XXS - 5XL · men/women

100% OCS-certified organic ring-spun cotton;  
single jersey

Grey Heather: 85% cotton, 15% viscose

classic bestseller · eco-friendly cotton  
(OCS-certified) · unisex style - great fit for  
men & women · regular shape

Sizes 4-5XL only in: White, Black Opal, Grey Heather,  
Navy Blue, Bright Royal & Scarlet Red

- \* Unisex style
- \* Classic bestseller
- \* Family style

Matching styles: Classic-T p. 18



All colours:  
Contains 100% organically  
grown cotton certified by  
Control Union Certifications  
(CU 819645).



Grey Heather:  
Contains 85% organically  
grown cotton certified by  
Control Union Certifications  
(CU 819645).

# Classic-T Organic, 145g

women · XS-XL · ST2620

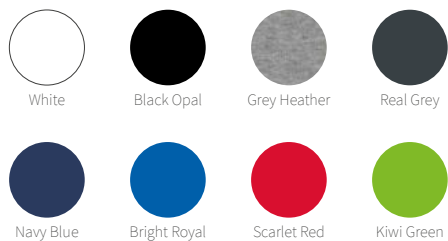
100% OCS-certified organic ring-spun cotton;  
single jersey

Grey Heather: 85% cotton, 15% viscose

classic bestseller · eco-friendly cotton  
(OCS-certified) · side seams · regular  
shape

\* Classic bestseller

Matching styles: Classic-T p. 19



**Grey Heather:**  
Contains 85% organically  
grown cotton certified by  
Control Union Certifications  
(CU 819645).



**All colours:**  
Contains 100% organically  
grown cotton certified by  
Control Union Certifications  
(CU 819645).



## Classic-T Organic

*Organic cotton T-shirts,  
a sustainable choice for  
everyday wear that cares  
for both, you and the  
planet.*





## Classic-T Organic, 145g

children · XS-XL · ST2220

100% OCS-certified organic ring-spun cotton;  
single jersey

Grey Heather: 85% cotton, 15% viscose

classic bestseller · durable fabric · eco-friendly cotton  
(OCS-certified) · regular shape

\* Classic bestseller

\* Family style

Matching styles: Classic-T p. 20

size	XS	S	M	L	XL
age	5-6	7-8	9-10	11-12	12-13
cm	110-116	122-128	134-140	146-152	158-164



White



Black Opal



Grey Heather



Real Grey



Navy Blue



Bright Royal



Scarlet Red



Kiwi Green

**Grey Heather:**  
Contains 85% organically  
grown cotton certified by  
Control Union Certifications  
(CU 819645).



**All colours:**  
Contains 100% organically  
grown cotton certified by  
Control Union Certifications  
(CU 819645).







## Comfort-T 185, 185g

ST2100 · S - 5XL · men

ST2160 · S - XXL · women

100% ring-spun cotton; single jersey

Grey Heather: 85% cotton, 15% viscose

durable fabric · heavyweight ring-spun cotton · regular shape

**Men's sizes 4-5XL only in:** White, Black Opal, Navy Blue, Blue Midnight, Bottle Green, Bright Royal, Grey Heather, Marina Blue, Scarlet Red & Slate Grey

**Matching styles:** Comfort-T 185 Long Sleeve p. 45





## Comfort-T 185

*The popular  
heavyweight made  
of durable ring-spun  
cotton.*





## Lux-T, 180g

ST7000 · XS - 5XL · men/women

100% ring-spun combed cotton; single jersey

*luxurious quality ring-spun combed cotton · available in 14 colours · unisex style  
- great fit for men & women · premium woven size label in the collar, tear-away label in the side seam · regular shape*

*Sizes 4-5XL only in: White, Black Opal, Grey Heather & Navy Blue*

\* Unisex style



White



Black Opal



Dark Grey Heather



Grey Heather



Slate Grey



Dark Denim Heather



Blue Midnight



Navy Blue



Bright Royal



Bottle Green



Kelly Green



Scarlet Red



Orange



Sunflower Yellow

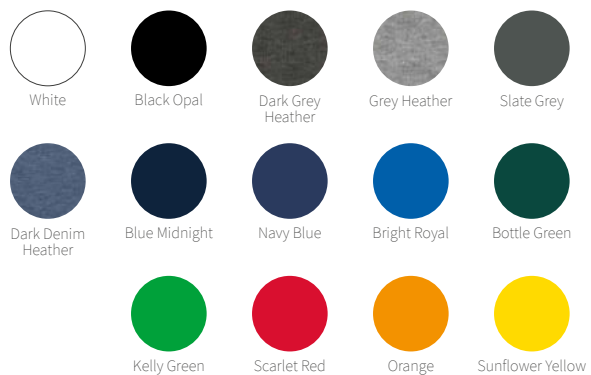
## Lux-T, 160g

women · XS-3XL · ST7600

100% ring-spun combed cotton; single jersey

*luxurious quality ring-spun combed cotton · available in 14 colours · feminine shape · premium woven size label in the collar · tear-away label in the side seam · regular shape*

**Size 3XL only in:** White, Black Opal, Grey Heather & Navy Blue







## Clive & Claire Crew Neck, 170g

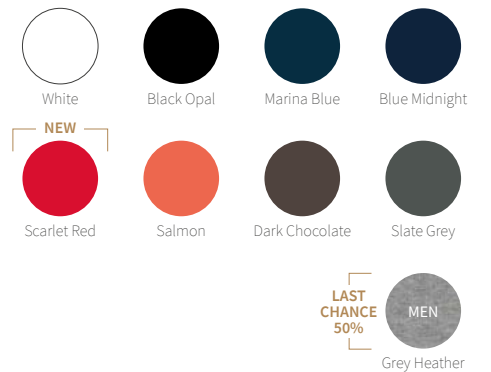
men · S - 3XL · **ST9600**  
women · XS - XXL · **ST9700**

95% ring-spun combed cotton,  
5% elastane monofilament;  
single jersey "full feeder"  
Grey Heather: 82% cotton, 14% viscose, 4% elastane

stretchy, combed cotton  
with elastane · no label in collar ·  
fitted shape

Men's size 3XL and women's sizes XS & XXL only in:  
White, Black Opal, Scarlet Red, Slate Grey, Blue Midnight & Marina Blue

**Matching styles:**  
Clive & Claire Relaxed p. 32, V-neck p. 40, Long Sleeve p. 47-48









## Clive & Claire Relaxed, 170g

ST9630 · S - XXL · men

ST9730 · XS - XL · women

95% ring-spun combed cotton,  
5% elastane monofilament;  
single jersey "full feeder"

Grey Heather: 82% cotton, 14% viscose, 4% elastane

stretchy, combed cotton  
with elastane · no label in collar ·  
regular shape

Matching styles: Clive & Claire Crew Neck p. 30



White



Black Opal



Grey Heather



Marina Blue



Bright Royal



Dark Chocolate



Scarlet Red



Salmon



## Ben Crew Neck, 160g

men · S - 3XL · ST9000

100% ring-spun cotton; single jersey  
Grey Heather: 85% cotton, 15% viscose

premium ring-spun cotton · rib  
collar · side seams · no label in  
collar · regular shape

Size 3XL only in: White, Black Opal & Marina Blue

Matching styles: Ben V-neck p. 39



White



Black Opal



Grey Heather



Slate Grey



Marina Blue



King Blue



Hawaii Blue



Deep Lilac



Daisy Yellow



Green Flash





## Morgan Crew Neck, 160g

ST9020 · S - XXL · men

100% ring-spun cotton; single jersey  
Grey Heather: 85% cotton, 15% viscose

premium ring-spun cotton ·  
rib collar · side seams · no label  
in collar · fitted shape

**Size XXL only in:** White, Black Opal, Grey Heather, Slate Grey,  
Marina Blue, King Blue, Crimson Red & Military Green

**Matching styles:** Morgan Long Sleeve p. 46



White



Black Opal



Grey Heather



Slate Grey



Marina Blue



King Blue



Deep Lilac



Crimson Red



Daisy Yellow



Green Flash



Military Green

## Megan Crew Neck, 145g

women · XS - XL · ST9120

100% ring-spun combed cotton; single jersey

high-quality combed cotton ·  
slim rib collar · no label  
in collar · fitted shape

**Matching styles:** Megan V-neck p. 41



White



Black Opal



Marina Blue







## Finest Cotton-T, 105g

ST9100 · S - XL · men

ST9110 · S - XL · women

100% ring-spun combed cotton;  
single jersey

*fine, soft and stretchy combed cotton ·  
rolled self-fabric collar ·  
no label in collar · regular shape (men) ·  
fitted shape (women)*



White



Black Opal



Marina Blue

## Shawn & Sharon Henley T-shirt, 140g

men · S - XXL · ST9430  
women · S - XL · ST9530

100% ring-spun cotton, slub yarn;  
single jersey

slub yarn for a texturised  
look · metal buttons · no label in  
collar · regular shape

Matching styles: Shawn & Sharon Henley  
Long Sleeve p. 50



White



Black Opal







## Classic-T V-neck, 155g

ST2300 · S - 3XL · men

ST2700 · S - XXL · women

100% ring-spun cotton; single jersey

Grey Heather: 85% cotton, 15% viscose

classic bestseller · high-quality ring-spun cotton · regular shape

Men's size 3XL and women's size XXL only in: White, Black Opal, Grey Heather, Navy Blue, Bright Royal & Scarlet Red

\* Classic bestseller

Matching styles: Classic-T p. 18, Classic-T Long Sleeve p. 44



White



Black Opal



Grey Heather



Blue Midnight



Navy Blue



Bright Royal



Ocean Blue



Deep Berry



Scarlet Red



Orange



Sunflower Yellow



Yellow



Bottle Green



Kiwi Green



Light Blue



Sweet Pink



## Ben V-neck, 160g

men · S - XXL · ST9010

100% ring-spun cotton; single jersey  
Grey Heather: 85% cotton, 15% viscose

premium ring-spun cotton ·  
rib collar · no label in collar ·  
regular shape

**Matching styles:** Ben Crew Neck p. 33



White



Black Opal



Slate Grey



Marina Blue



Military Green





## Clive & Claire V-neck, 170g

ST9610 · S - 3XL · men

ST9710 · XS - XXL · women

95% ring-spun combed cotton,  
5% elastane monofilament;  
single jersey "full feeder"

stretchy, combed cotton  
with elastane · no label in  
collar · fitted shape

**Men's size XXL-3XL only in:** White, Black Opal, Scarlet Red,  
Slate Grey, Blue Midnight & Marina Blue

**Matching styles:** Clive & Claire Crew Neck p. 30,  
Long Sleeve p. 47-48



White



Black Opal



Slate Grey



Marina Blue



Blue Midnight



Scarlet Red



King Blue

## Megan V-neck, 145g

women · S - XL · **ST9130**

*100% ring-spun combed cotton;  
single jersey*

*high-quality combed cotton ·  
slim rib collar · no label  
in collar · fitted shape*

**Matching styles:** *Megan Crew Neck p. 35*



White



Black Opal



Marina Blue







## Classic Tank Top, 155g

ST2800 · S - XXL · men

ST2900 · S - XL · women

100% ring-spun cotton; single jersey

high-quality ring-spun cotton · collar  
with rib binding · regular shape

\* Classic bestseller



White



Black Opal

## Tank Top, 160g

men · S - XXL · ST2810

100% ring-spun cotton; single jersey  
Grey Heather: 85% cotton, 15% viscose

premium ring-spun cotton ·  
no label in collar ·  
tear-away label in side seam ·  
modern, fitted shape



White



Black Opal



Grey Heather





## Classic-T Long Sleeve, 155g

ST2500 · S - 3XL · men

100% ring-spun cotton; single jersey  
Grey Heather: 85% cotton, 15% viscose

classic bestseller · high-quality ring-spun  
cotton · regular shape

Size 3XL only in: White, Black Opal, Grey Heather & Navy Blue

\* Classic bestseller

Matching styles: Classic-T p. 18, Classic-TV-neck p. 38



White



Black Opal



Grey Heather



Blue Midnight



Navy Blue



Bright Royal



Scarlet Red



## Comfort-T 185 Long Sleeve, 185g

men · S - 3XL · **ST2130**

*100% ring-spun cotton; single jersey*  
*Grey Heather: 85% cotton, 15% viscose*

*durable fabric · heavyweight ring-spun  
cotton · regular shape*

**Matching styles:** *Comfort-T 185 p. 26*



White



Black Opal



Grey Heather



Navy Blue





## Morgan Long Sleeve, 160g

*ST9040 · S - XL · men*

*100% ring-spun cotton; single jersey*

*premium ring-spun cotton · rib collar ·  
no label in collar · fitted shape*

**Matching styles:** *Morgan Crew Neck p. 34*



White



Black Opal



Slate Grey



Marina Blue

## Clive Long Sleeve, 170g

men · S - XXL · ST9620

95% ring-spun combed cotton,  
5% elastane monofilament;  
single jersey "full feeder"

Grey Heather: 82% cotton, 14% viscose, 4% elastane

stretchy, combed cotton with elastane ·  
no label in collar · fitted shape

Matching styles: Clive & Claire Crew Neck p. 30, V-neck p. 40



White



Black Opal



Grey Heather



Slate Grey







## Claire V-neck Long Sleeve, 170g

ST9720 · S - XL · women

95% ring-spun combed cotton, 5% elastane  
monofilament; single jersey "full feeder"

Grey Heather: 82% cotton, 14% viscose, 4% elastane

stretchy, combed cotton with elastane · no  
label in collar · fitted shape

**Matching styles:** Clive & Claire Crew Neck p. 30, V-neck p. 40



White



Black Opal



Grey Heather



Marina Blue



Cupcake Pink



## Clive & Claire Long Sleeve

*Long sleeve cotton  
T-shirts, thoughtfully  
designed with a touch  
of stretch for everyday  
comfort and style.*



## Shawn & Sharon Henley Long Sleeve, 140g

ST9460 · S - XXL · men

ST9580 · S - XL · women

100% ring-spun cotton, slub yarn;  
single jersey

slub yarn for a texturised look · metal  
buttons · no label in collar · regular  
shape

**Matching styles:** Shawn & Sharon Henley T-shirt p. 37



White



Black Opal



## Knit Long Sleeve, 210g

men · S - XXL · **ST9080**  
women · S - XL · **ST9180**

58% polyester, 37% viscose,  
5% elastane; multifilament; single jersey

soft knit fabric with  
viscose · fashionable loose shape · no  
label in collar · regular shape



Light Grey  
Melange



Dark Grey  
Melange



Marina Blue  
Melange





## Dexter Briefs, 195g

ST9692 · S - XXL · men

92% ring-spun combed cotton, 8% elastane monofilament; single jersey "full feeder"

stretchy, combed cotton with elastane · elastic waistband · 2-pack · fitted shape



White



Black Opal



## Dexter Boxers, 195g

men · S - XXL · ST9691

92% ring-spun combed cotton, 8% elastane  
monofilament; single jersey "full feeder"

stretchy, combed cotton with  
elastane · elastic waistband · 2-pack ·  
fitted shape



White



Black Opal







## POLO SHIRTS

### Collection

Our newest addition to the Stedman® collection:  
Lux Polo for men and women made of premium combed cotton  
piqué. You can find our new Lux Polos on page 62.

Our entire collection features tear-away tags in the collar  
or side seam for effortless personalization.

[stedman.eu/polos](http://stedman.eu/polos)









## Polo, 170g

ST3000 · S - 5XL · men

ST3100 · XS - XXL · women

ST3200 · XS - XL · children

100% ring-spun cotton; honeycomb piqué

Grey Heather: 85% cotton, 15% viscose

classic bestseller · soft single jersey cotton with piqué look · rib collar · regular shape

Men's sizes 3-5XL and women's sizes XS & XXL only in: White, Black Opal, Grey Heather, Blue Midnight, Navy Blue, Bright Royal & Scarlet Red

\* Classic bestseller

\* Family style

Matching styles: Polo Long Sleeve p. 59

size	XS	S	M	L	XL
age	5-6	7-8	9-10	11-12	12-13
cm	110-116	122-128	134-140	146-152	158-164

Men, women & children



White



Black Opal



Grey Heather



Navy Blue



Bright Royal



Scarlet Red

Men & women



Blue Midnight



Ocean Blue



Light Blue



Kiwi Green



Brilliant Orange



Burgundy Red



Yellow



Deep Berry



Orange



Bottle Green



Sweet Pink

WOMEN  
LAST CHANCE  
50%

MEN

MEN

MEN

WOMEN

## Classic Polo

*Our popular polo shirts with a large colour palette for men, women and children. Made of soft ring-spun cotton in a beautiful honeycomb piqué.*



## Polo Long Sleeve, 170g

men · S - XXL · ST3400

100% ring-spun cotton; honeycomb piqué  
Grey Heather: 85% cotton, 15% viscose

classic bestseller · soft single jersey  
cotton with piqué look ·  
rib collar · regular shape

\* Classic bestseller

Matching styles: Polo p. 57



White



Black Opal



Grey Heather



Navy Blue







## Clive & Claire Polo, 210g

ST9640 · S - 3XL · men  
 ST9740 · XS - XXL · women

95% ring-spun combed cotton,  
 5% elastane; true piqué

high-quality cotton piqué fabric · stretchy  
 fabric · 3 tone-on-tone buttons · modern,  
 narrow collar for women · premium  
 woven size label in the collar · tear-away  
 label in the side seam · fitted shape



White



Black Opal



Slate Grey



Blue Midnight



Marina Blue



NEW  
 Scarlet Red







# New Style

## Lux Polo, 180g

men · S - 5XL · **ST9060**  
women · XS - 3XL · **ST9160**

100% ring-spun combed cotton;  
single piqué

premium combed  
cotton piqué · rib collar  
and cuffs · no label in  
collar · regular shape

Men's sizes 4-5XL and women's size 3XL only in:  
White, Black Opal & Blue Midnight



White



Black Opal



Slate Grey



Blue Midnight



Marina Blue



Scarlet Red







## Henry Polo, 225g

ST9050 · S - XXL · men

100% ring-spun combed cotton;  
single piqué

heavyweight premium combed cotton  
piqué · rib collar and side seam  
slits · no label in collar · regular shape



White



Black Opal



Slate Grey



Marina Blue



True Blue



Crimson Red



Bahama Green



## Henry Polo

*A premium heavyweight single piqué polo shirt made of ring-spun combed cotton. Highly durable and excellent for a multitude of printing applications.*





# SWEATSHIRTS

## Collection

The perfect choice for athletic as well as casual outfits: sweatshirts, hoodies, sweat jackets and -pants, made of soft, high-quality cotton blends and recycled materials.

Our entire collection features tear-away tags in the collar or side seam for effortless personalization.

[stedman.eu/sweats](https://stedman.eu/sweats)



## Sweatshirt Classic, 280g

ST4000 · XS - 3XL · men/women

80% cotton, 20% polyester; ring-spun;  
3-thread-fleece

Grey Heather: 70% cotton, 20% polyester, 10% viscose

100% cotton surface · durable  
cotton-blend · brushed inside ·  
unisex style - great fit for men &  
women · regular shape

\* Unisex style



White



Black Opal



Grey Heather



Real Grey



Navy Blue



Bright Royal



Scarlet Red



## Sweatshirt Select, 280g

men · S - XXL · ST5620

80% cotton, 20% polyester; ring-spun,  
multifilament; 3-thread-fleece

Grey Heather: 70% cotton, 30% polyester

100% cotton surface · soft cotton-  
blend · brushed inside · modern, sporty  
design with side panels · no label in  
collar · regular shape



Black Opal



Grey Heather



Slate Grey



Blue Midnight



Hawaii Blue



Crimson Red



Kiwi Green





## Sweat Hoodie Light, 190g

ST4200 · XS - 4XL · men/women

100% ring-spun cotton;  
2-thread fleece

lightweight ring-spun cotton · brushed  
inside · unisex style - great fit for men & women · no  
label in collar · regular shape

Sizes 3-4XL only in: Black Opal & Real Grey

\* Unisex style



Black Opal



Real Grey



Bright Royal



Ocean Blue



Scarlet Red



Kiwi Green



Deep Berry



Orange



Sweet Pink

# Sweat Hoodie Classic, 280g

men · S - 3XL · ST4100  
women · S - XL · ST4110

80% cotton, 20% polyester; ring-spun;  
3-thread-fleece  
Grey Heather: 70% cotton, 20% polyester, 10% viscose

100% cotton surface · durable  
cotton-blend · brushed  
inside · regular shape



White



Black Opal



Grey Heather



Navy Blue



Bright Royal



Scarlet Red





## Hoodies

*Hoodies are the ultimate versatile addition to your wardrobe. Whether you're dressing up or keeping it casual, they effortlessly blend comfort and style.*



## Sweat Hoodie Select, 280g

men/women · XS - 3XL · ST5600

80% cotton, 20% polyester;  
ring-spun, multifilament;  
3-thread-fleece

Grey Heather: 70% cotton, 30% polyester

100% cotton surface · soft cotton-  
blend · brushed inside · unisex style -  
great fit for men & women · no label  
in collar · regular shape

Sizes XS & 3XL only in: Black Opal, Grey Heather,  
Slate Grey & Blue Midnight

\* Unisex style



Black Opal



Grey Heather



Slate Grey

LAST  
CHANCE  
50%



Crimson Red



Blue Midnight







## Sweat Jacket Select, 280g

**ST5610** · S - 3XL · men

**ST5710** · S - XL · women

80% cotton, 20% polyester;  
ring-spun, multifilament;  
3-thread-fleece

Grey Heather: 70% cotton, 30% polyester

100% cotton surface · soft  
cotton-blend · brushed inside ·  
modern design with zipper and  
metal puller · no label in collar ·  
regular shape

**Men's size 3XL only in:** Black Opal,  
Grey Heather & Blue Midnight



Black Opal



Grey Heather



Blue Midnight



Crimson Red

LAST  
CHANCE  
50%



## Sweat Hoodie, 280g

men/women · XS - 3XL · ST5630

80% cotton, 20% polyester; ring-spun, multifilament;  
3-thread-fleece

Grey Heather: 70% cotton, 30% polyester

100% cotton surface · brushed inside · front surface fully printable despite side pockets · unisex style - great fit for men & women · no label in collar, tear-away label in side seam · regular shape

\* Unisex style



Black Opal



Grey Heather



Blue Midnight



## Hoodies & Sweatpants

*Hoodies and sweatpants are beloved staples in people's wardrobes, offering comfort and coziness like no other.*





## Sweatpants, 280g

men/women · XS - XXL · ST5650

80% cotton, 20% polyester; ring-spun, multifilament;  
3-thread-fleece

Grey Heather: 70% cotton, 30% polyester

100% cotton surface · brushed inside · unisex style - great fit for men & women · tear-away label in waistband · regular shape

\* Unisex style



Black Opal



Grey Heather



Blue Midnight







# SPORTS

## Collection

The Stedman® sports range has the right style for your workout needs. High-quality, moisture-wicking functional fabrics that are breathable and modern. If you prefer sustainable materials, choose one of many styles made from recycled plastic bottles.

Our entire collection features tear-away tags in the collar or side seam for effortless personalization.

[stedman.eu/sports](https://stedman.eu/sports)









## Sports-T, 140g

ST8000 · S - 3XL · men

ST8100 · XS - XXL · women

ST8170 · S - XL · children

100% ACTIVE-DRY® polyester multifilament; interlock

tight knit, elastic fabric with sleek surface · quick-drying  
and moisture-wicking · no label in collar · fitted shape  
(men & women) · regular shape (children)

### \* Family style

size	S	M	L	XL
age	7-8	9-10	11-12	12-13
cm	122-128	134-140	146-152	158-164



White



Black Opal



Silver Grey



Granite Grey



Blue Midnight



Hawaii Blue



Crimson Red



Cyber Orange



Cyber Yellow



Kiwi Green



Sweet Pink



## Sports Top, 140g

ST8010 · S - XXL · men

ST8110 · S - XL · women

100% ACTIVE-DRY® polyester  
multifilament; interlock

tight knit, elastic fabric with sleek  
surface · quick-drying and  
moisture-wicking · no label in  
collar · fitted shape



White



Black Opal



WOMEN

Sweet Pink



## Interlock

*A thicker and more durable fabric with a very smooth surface.*

*The answer to your sophisticated printing needs.*







## Active 140 Raglan, 140g

ST8410 · S - XXL · men

ST8500 · S - XL · women

ST8570 · S - XL · children

100% ACTIVE-DRY® polyester multifilament; bird-eyelet mesh

light and stretchy mesh fabric · raglan sleeves · great moisture-control · no label in collar · regular shape

\* Family style

size	S	M	L	XL
age	7-8	9-10	11-12	12-13
cm	122-128	134-140	146-152	158-164



White



Black Opal



Marina Blue



King Blue



Crimson Red



Cyber Yellow



Kiwi Green

## Active 140

*Our popular sports range made of light and stretchy mesh fabric.*



## Active 140 Crew Neck, 140g

*ST8400 · S - XXL · men*

*100% ACTIVE-DRY® polyester multifilament; bird-eyelet mesh*

*light and stretchy mesh fabric · great moisture-control · no label in collar · regular shape*



White



Black Opal



Marina Blue



King Blue



Crimson Red



Cyber Yellow



## Active 140 Team Raglan, 140g

men · S - XXL · **ST8030**  
 women · S - XL · **ST8130**

100% ACTIVE-DRY® polyester multifilament;  
 bird-eyelet mesh (reversed)

light and stretchy mesh fabric  
 with sleek surface · raglan  
 sleeves · great moisture-control · no  
 label in collar · regular shape



White



Black Opal



Silver Grey

LAST  
 CHANCE  
 50%



Hawaii Blue



Granite Grey



Cyber Yellow





## Active 140 Sleeveless, 140g

ST8440 · S - XXL · men

100% ACTIVE-DRY® polyester multifilament;  
bird-eyelet mesh

light and stretchy mesh fabric · great  
moisture-control · no label in  
collar · regular shape



White



Black Opal

## Active 140 Tank, 140g

women · S - XL · ST8540

100% ACTIVE-DRY® polyester multifilament;  
bird-eyelet mesh

light and stretchy mesh fabric · great  
moisture-control · no label in  
collar · regular shape



White



Black Opal







## Active 140 Polo, 140g

ST8450 · S - XXL · men

100% ACTIVE-DRY® polyester multifilament;  
bird-eyelet mesh

light and stretchy mesh fabric · rib  
collar · great moisture-control · no label  
in collar · regular shape



White



Black Opal



Marina Blue

## Active 140 Long Sleeve, 140g

men · S - XXL · ST8420

100% ACTIVE-DRY® polyester multifilament;  
bird-eyelet mesh

light and stretchy mesh fabric · raglan  
sleeves · great moisture-control · no label  
in collar · regular shape



White



Black Opal



Marina Blue



Crimson Red





## Seamless Tights, 300g

ST8990 · S - XL · women

82% nylon, 18% elastane

*durable nylon fabric · high  
elasticity · breathable and quick-  
drying · fitted shape*



Grey Steel



## Cotton Touch, 160g

men · S - XXL · ST8600  
women · S - XL · ST8700

100% ring-spun ACTIVE-DRY® polyester  
"cotton touch"; single jersey

*fine and smooth fabric that feels like real  
cotton · moisture-wicking  
and breathable · no label in  
collar · regular shape*



White



Black Opal



Crimson Red



Cyber Orange



Cyber Yellow



Kiwi Green



## Recycled Sports

*Our sports T-shirts, thoughtfully crafted from recycled materials, embody the spirit of sustainability and athleticism. From the gym to the field, they not only keep you comfortable but also make a positive impact on the environment.*







## Recycled Sports-T Race, 160g

men · S - XXL · **ST8850**  
 women · S - XL · **ST8950**

90% ACTIVE-DRY® polyester (50% recycled),  
 10% elastane; multifilament;  
 single jersey

eco-friendly material made from  
 4 recycled plastic bottles · very stretchy  
 and airy mesh fabric · heathered  
 look with contrast elements · no label  
 in collar · tear-away label in side  
 seam · fitted shape



Grey Heather



Denim Heather







## Recycled Sports-T Move, 125g

**ST8830** · S - XXL · men

**ST8930** · S - XL · women

100% ACTIVE-DRY® polyester  
multifilament (50% recycled);  
single jersey

eco-friendly material made from 4  
recycled plastic bottles ·  
very light fabric with heathered look ·  
rounded hem and overcut sleeves  
for women · no label in collar, tear-away  
label in side seam · regular shape



Coral Heather



Denim Heather



Grey Heather





## Recycled Sports-T Reflect, 190g

men · S - XXL · **ST8840**  
 women · S - XL · **ST8940**

90% ACTIVE-DRY® polyester (50% recycled),  
 10% elastane; multifilament; single jersey

*eco-friendly material made  
 from 4 recycled plastic bottles ·  
 super soft fabric with great  
 moisture-control · reflecting tape on front  
 and back · no label in collar,  
 tear-away label in side seam ·  
 fitted shape*



Grey Heather



Blue Heather











## Recycled Scuba Jacket, 300g

**ST5840** · S - XXL · men

**ST5940** · XS - XL · women

94% polyester (24% recycled), 6% elastane;  
multifilament; interlock scuba

Antra Heather: 81% polyester (28% recycled), 13% viscose,  
6% elastane

eco-friendly material made from  
8 recycled plastic bottles · stretchy and  
breathable · no label in collar ·  
tear-away label in side seam ·  
regular shape



Black Opal



Antra Heather





# FLEECE

## Collection

Our extensive fleece range has you covered for extra warmth during your outdoor adventures. From basic jackets and vests to modern knit fleece jackets for a more sophisticated look.

Our entire collection features tear-away tags in the collar or side seam for effortless personalization.

[stedman.eu/fleece](https://stedman.eu/fleece)





## Fleece Jacket, 220g

ST5030 · S - 3XL · men

ST5100 · XS - XXL · women

100% polyester multifilament;  
micro fleece with anti-pilling treatment

warm and soft with great heat  
insulation · both sides brushed · no  
label in collar · regular shape

Men's size 3XL only in: Black Opal & Blue Midnight

Matching Styles: Fleece Vest p. 104



Black Opal



Blue Midnight



Scarlet Red



MEN

Grey Steel







## Fleece Vest, 220g

men · S - XXL · **ST5010**  
women · S - XL · **ST5110**

100% polyester multifilament;  
micro fleece with anti-pilling treatment

warm and soft with great heat  
insulation · both sides brushed · no  
label in collar · regular shape

**Matching styles:** Fleece Jacket p. 103



Black Opal



Blue Midnight



Scarlet Red



Grey Steel



Kiwi Green







## Fleece Half-Zip, 170g

ST5020 · S - XXL · men

*100% polyester multifilament;  
micro fleece with anti-pilling treatment*

*brushed outside · lightweight, warm and  
soft with great heat insulation · no label in  
collar · regular shape*



Black Opal



Grey Steel



Scarlet Red

## Hooded Fleece Jacket, 220g

men · S - XXL · ST5080

100% polyester multifilament;  
micro fleece with anti-pilling treatment

warm and soft with great heat  
insulation · both sides brushed · no label in  
collar · regular shape



Black Opal



Grey Steel



Blue Midnight







## Power Fleece Jacket, 280g

*ST5040 · S - XXL · men*

*100% polyester multifilament; fleece  
with anti-pilling treatment*

*very soft fabric with great heat  
insulation · both sides brushed · no  
label in collar · regular shape*



Grey Heather

## Knit Fleece Jacket, 280g

men · S - XXL · **ST5850**  
 women · S - XL · **ST5950**

100% polyester multifilament;  
 knit fleece with anti-pilling treatment

warm and stretchy knit  
 fabric · brushed inside · no label  
 in collar · regular shape



Light Grey  
Melange



Dark Grey  
Melange



Marina Blue  
Melange

LAST  
CHANCE  
50%



Blue Melange



Purple Melange









# JACKETS & VESTS

## Collection

Our popular Lux Padded Jackets, Padded Vests and Softshell Jackets are now available in all sizes in Black Opal and Blue Midnight!

Our entire collection features tear-away tags in the collar or side seam for effortless personalization.

[stedman.eu/jackets](https://stedman.eu/jackets)



## Lux Softshell Jacket, 250g

ST5440 · S - 5XL · men

ST5540 · XS - 3XL · women

100% polyester multifilament;  
3-layer-softshell

Outside: knitted softshell – water-repellent

Inner layer: membrane – breathable

Inside: micro fleece – soft and warm

detachable hood · high-quality SBS  
zippers · inside pocket on the front  
right · water-repellent and breathable  
3-layer fabric · fluorine and PFC  
free · premium woven size label in  
the collar · tear-away label in the side  
seam · regular shape



Black Opal



Blue Midnight







## Lux Padded Jacket

ST5420 · S - 5XL · men

ST5520 · XS - 3XL · women

**shell and lining:** 100% nylon;

**filling:** 100% polyester down alternative

*easy embroidery access to front left panel · half-moon in back centre for customisation · high-quality SBS zippers · inside pocket on the front right · stow-away function · fluorine and PFC free · premium woven size label in the collar · tear-away label in the side seam · regular shape*

**Matching styles:** Lux Padded Vest p. 116



Black Opal



Blue Midnight







## Lux Padded Vest

men · S - 5XL · **ST5430**  
women · XS - 3XL · **ST5530**

**shell and lining:** 100% nylon;  
**filling:** 100% polyester down alternative

easy embroidery access to front left panel · half-moon in back centre for customisation · high-quality SBS zippers · inside pocket on the front right · stow-away function · fluorine and PFC free · premium woven size label in the collar · tear-away label in the side seam · regular shape

**Matching styles:** Lux Padded Jacket p. 115



Black Opal



Blue Midnight





## LAST CHANCE

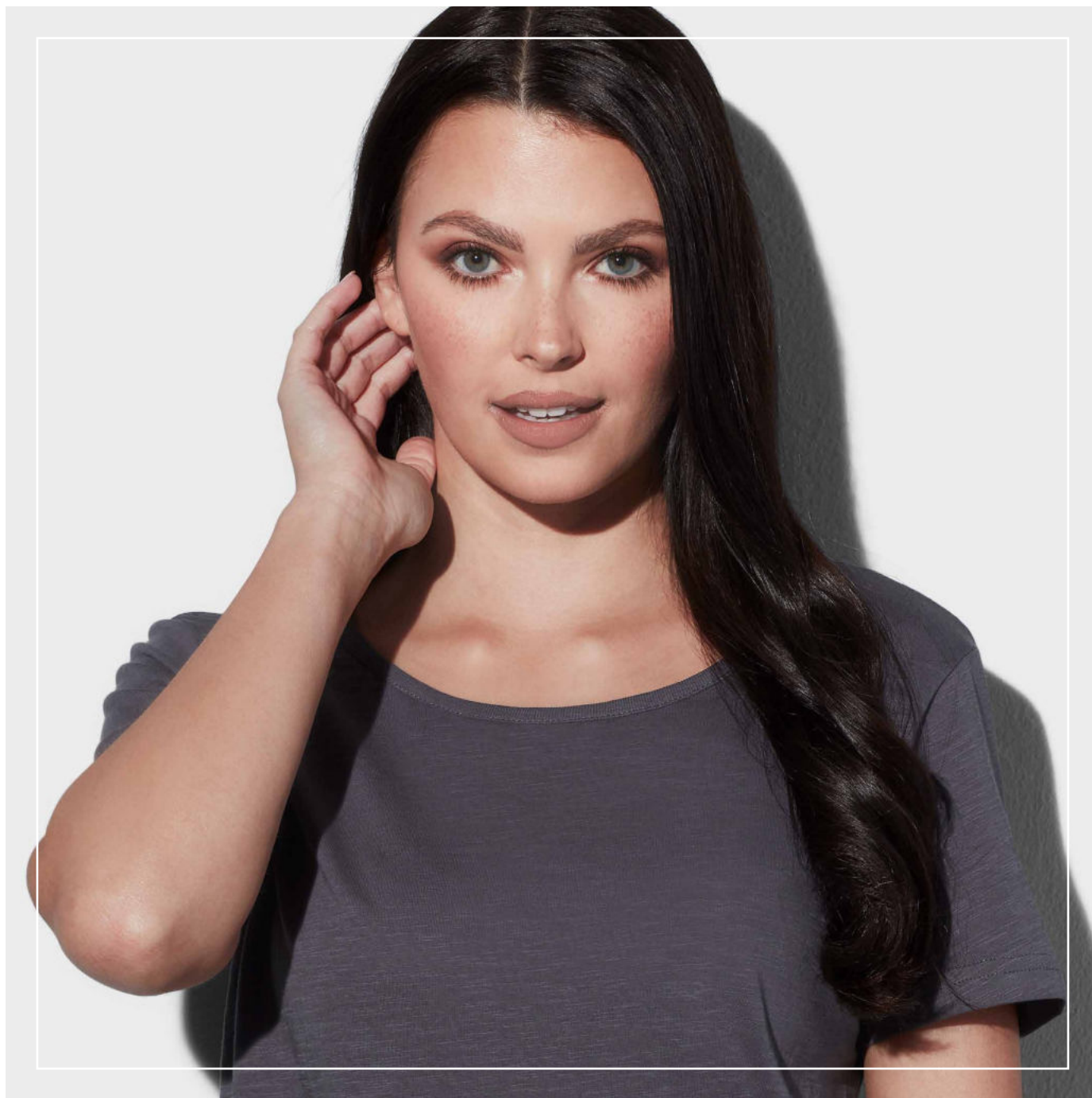
50% Discount

We offer a 50% discount on selected styles and colours. Hurry and get your “last chance”-styles while stocks last!

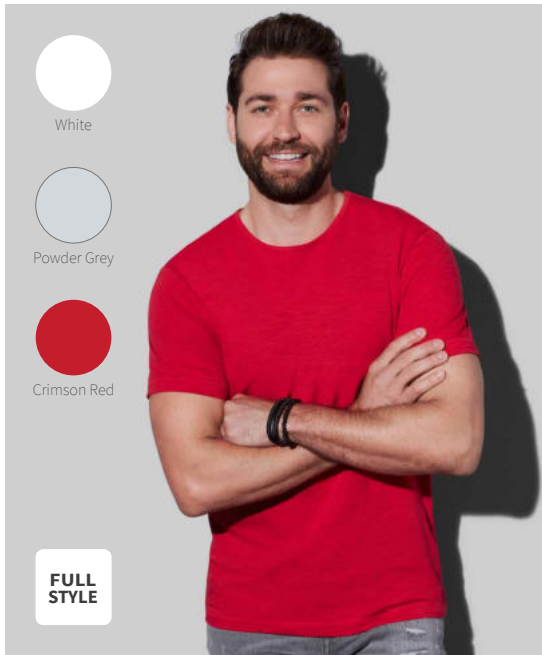
[stedman.eu/lastchance](https://stedman.eu/lastchance)

You can also find discontinued styles at a great discount in our Stedman® online outlet at:

[stedman.eu/outlet](https://stedman.eu/outlet)







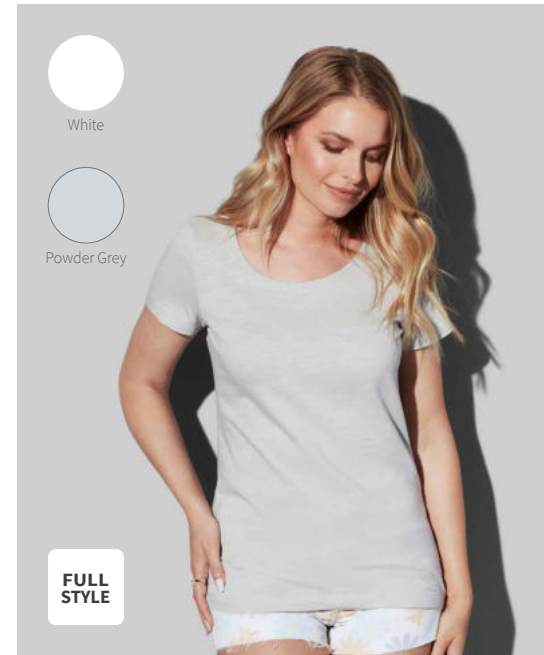
## Shawn Slub Crew Neck

ST9400 · S - XXL · men

100% ring-spun cotton, slub yarn;  
single jersey

slub yarn for a texturised  
look · slim, modern collar · no  
label in collar

\* Regular shape, 140g



## Sharon Slub Crew Neck

ST9500 · S - XL · women

100% ring-spun cotton, slub yarn;  
single jersey

slub yarn for a texturised  
look · slim, modern collar · no  
label in collar

\* Regular shape, 140g



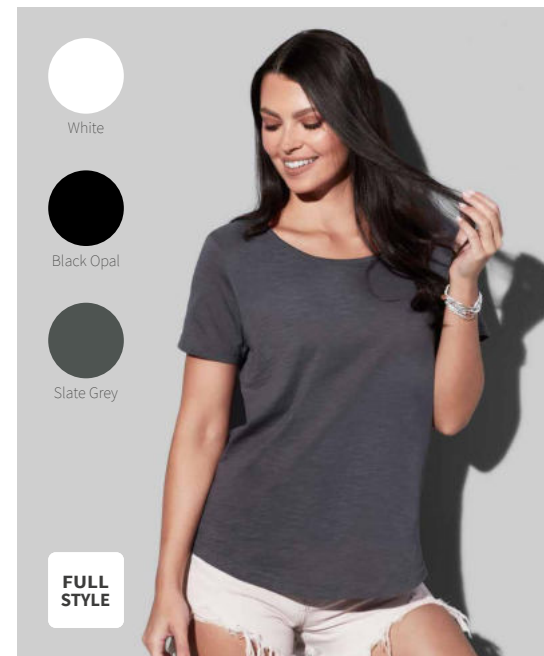
## Clive Crew Neck

ST9600 · S - 3XL · men

82% cotton, 14% viscose,  
4% elastane

stretchy, combed cotton with  
elastane · no label in collar

\* Fitted shape, 170g



## Slub Organic

ST9320 · S - XL · women

100% OCS-certified organic  
ring-spun cotton, slub yarn;  
single jersey

eco-friendly cotton (OCS-certified) ·  
slub yarn for a texturised look ·  
no label in collar

\* Regular shape, 130g



All colours:  
Contains 100% organically  
grown cotton certified by  
Control Union Certifications  
(CU 819645).





Burgundy Red

## Polo

ST3100 · XS - XXL · women

100% ring-spun cotton;  
honeycomb piqué

classic bestseller · soft single  
jersey cotton with piqué  
look · rib collar

\* Regular shape, 170g



Grey Heather



Deep Lilac



Pumpkin



Salmon Pink



Green Flash

## Harper Polo

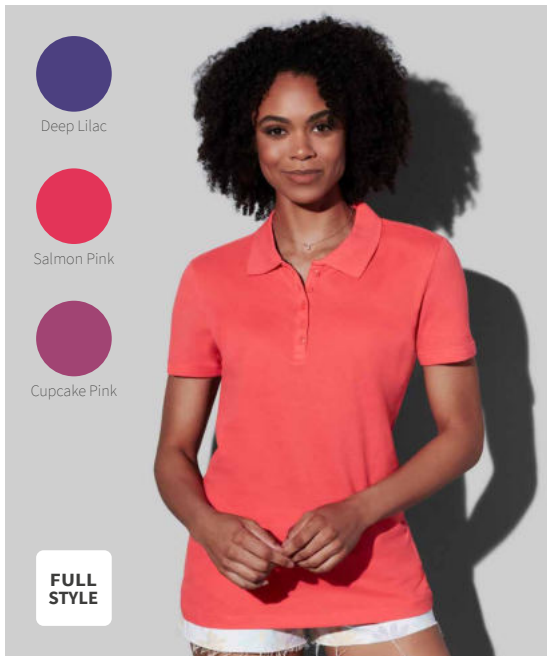
ST9060 · S - XXL · men

100% ring-spun combed cotton;  
single piqué

Grey Heather: 85% cotton, 15% viscose

premium combed cotton  
piqué · rib collar · no label in  
collar

\* Regular shape, 180g



Deep Lilac



Salmon Pink



Cupcake Pink

FULL  
STYLE

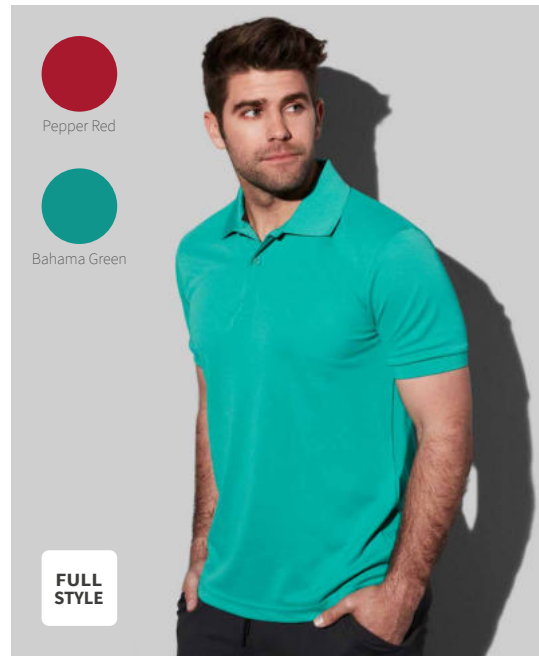
## Hanna Polo

ST9150 · S - XL · women

100% ring-spun combed cotton;  
single piqué

premium combed cotton  
piqué · rib collar · no label in  
collar

\* Regular shape, 170g



Pepper Red



Bahama Green

FULL  
STYLE

## Piqué Polo

ST8050 · S - XXL · men

100% ACTIVE-DRY® polyester;  
true piqué

high-quality functional piqué  
fabric · rib collar and cuffs · washable  
at 60°C · no label in collar

\* Regular shape, 180g



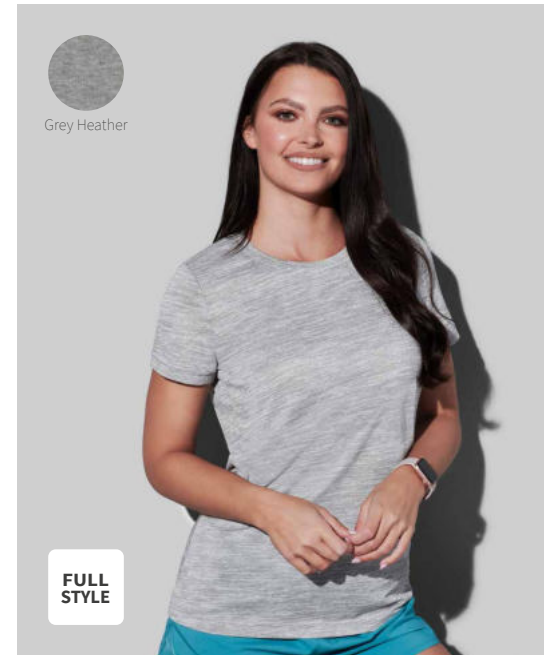
## Intense Tech

ST8020 · S - XXL · men

100% ACTIVE-DRY® polyester;  
jacquard

heathered look · breathable  
and quick-drying · no label  
in collar

\* Fitted shape, 140g



## Intense Tech

ST8120 · S - XL · women

100% ACTIVE-DRY® polyester;  
jacquard

heathered look · breathable  
and quick-drying · no label  
in collar

\* Fitted shape, 140g



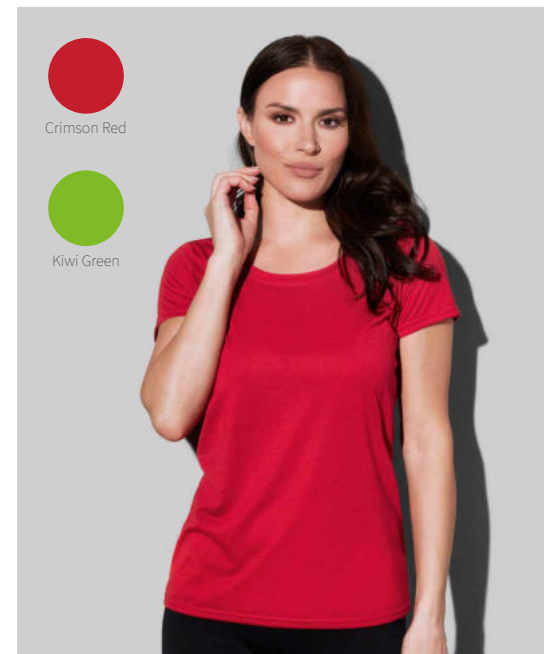
## Active 140 Team Raglan

ST8130 · S - XL · women

100% ACTIVE-DRY® polyester  
multifilament; bird-eyelet mesh  
(reversed)

light and stretchy mesh fabric with  
sleek surface · raglan sleeves · great  
moisture-control · no label in collar

\* Regular shape, 140g



## Cotton Touch

ST8700 · S - XL · women

100% ring-spun ACTIVE-DRY®  
polyester "cotton touch";  
single jersey

fine and smooth fabric that feels like  
real cotton · moisture-wicking and  
breathable · no label in collar

\* Regular shape, 160g



## Sweat Jacket Select

ST5610 · S - XXL · men

80% cotton, 20% polyester;  
ring-spun, multifilament;  
3-thread-fleece

100% cotton surface · soft  
cotton-blend · brushed  
inside · modern design with  
zipper and metal puller · no  
label in collar

\* Regular shape, 280g



## Sweat Hoodie Select

ST5600 · S - XXL · men/women

80% cotton, 20% polyester;  
ring-spun, multifilament;  
3-thread-fleece

100% cotton surface · soft  
cotton-blend · brushed  
inside · unisex style - great fit  
for men & women · no label  
in collar

\* Regular shape, 280g



## Knit Fleece Jacket

ST5950 · S - XL · women

100% polyester multifilament;  
knit fleece with anti-pilling  
treatment

warm and stretchy knit  
fabric · brushed inside · no  
label in collar

\* Regular shape, 280g



## Melange Fleece Jacket

ST5060 · S - XXL · men

100% polyester; melange fleece  
with anti-pilling treatment

both sides brushed · warm  
and velvety fabric with great heat  
insulation · no label in collar

\* Regular shape, 310g





For more information on our  
discounted styles please visit  
our website:

[stedman.eu/sale](https://stedman.eu/sale)

# COLOURS

2024

Discover our **new colour “Natural”** in the Classic-T range! To easily sort all products by colour, please visit [stedman.eu](https://stedman.eu)

*For production reasons, the colours reproduced here may differ from those of the actual products.*



## SOLID COLOURS



## HEATHERED COLOURS





# FIBRES, YARNS & FABRICS

2024

A brief material guide for  
a better understanding.

[stedman.eu](http://stedman.eu)





## OUR FIBRES

### Cotton

Cotton fibre is a natural fibre obtained from the seed hairs of the cotton plant. Its main component is cellulose. The seed hairs can vary in quality and length and are differentiated by what's called the staple length.

Due to cotton's high moisture absorption and breathability, it offers a high level of comfort and is durable, easy to clean, and exceptionally long-lasting.

*\* Cotton serves as the foundation for all our T-shirts and sweatshirts.*

### Viscose

Viscose is a regenerated fibre. Its main component is also cellulose. It is produced through a chemical process that dissolves wood and then spins it into endless filaments. Its properties are similar to those of cotton.

*\* At Stedman®, we use viscose fibre to create heathered colour effects in combination with cotton.*

### Polyester

This is a synthetic fibre. It is produced as endless filaments from polyethylene terephthalate using a melt spinning process. During this process, fineness, sheen, and texture can be adjusted based on the intended use. Polyester is very easy to care for and resilient. It doesn't absorb moisture but transports it along the surface of the fibre, which makes it well-suited for functional textiles.

*\* We use pure polyester in our sports and outdoor styles and also combine it with cotton fibre for increased dimensional stability in our heavy cotton products.*

### Polyamide

Polyamide, in specific forms named nylon, is similar to polyester in terms of production and properties. It is derived from carbon using the same process and has higher elasticity than polyester.

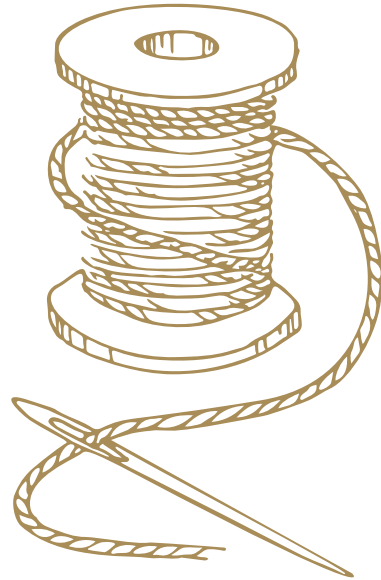
*\* You can find very fine nylon in our padded jackets and vests.*

### Elastane

As the name suggests, this fibre is highly stretchable. It is produced through dry spinning from polyurethane and polyethylene glycol and is usually combined with other inelastic fibres. This combination allows greater elasticity and shape retention.

*\* For maximum comfort in a T-shirt, we combine elastane with cotton.*

## OUR YARNS



### Filament Yarns

When synthetic fibres are used in their endless length instead of being cut into short pieces, they are referred to as filament yarns. In clothing, they are often used as multifilament yarns, which are yarns composed of numerous very fine filaments. The yarn is produced directly in the spinning process, where the required number of filaments is simultaneously spun out and brought together in drafting.

The properties of the yarn can be determined by the shape, fineness, and number of filaments, surface coating, or texturing.

*\* For our sports styles, we use ACTIVE-DRY® polyester, a fine multifilament yarn that effectively transports moisture due to the shape of its filaments. In micro fleece, a textured, less fine yarn is used, which can be roughened on the surface to achieve the highly desired soft texture. In our outdoor jackets, the functionality of the yarns is optimally matched to their intended purpose.*

### Ring-spun Cotton, Carded or Combed

To create yarn from individual fibres, they are twisted together in a solid structure. In the process of ring spinning, this happens in multiple steps.

Firstly, the required amount of fibre is cleaned and oriented. This orientation can be achieved through sole carding or additional combing of the fibres. Carding roughly orients the fibres in the same direction. If particularly high yarn quality is desired, the roughly oriented fibres are then brought into high parallel alignment through combing, while simultaneously removing the shortest fibres. This results in a smoother and more durable yarn. In the next step, the oriented fibres are brought together into a sliver, a thick strand of fibres, which is then in the final step processed into a solid yarn through simultaneous stretching and rotating.

The finer the yarn is intended to be, the longer the staple length of the used fibres needs to be. Compared to other methods, the ring spinning process produces the highest yarn quality.

Before the spinning process, cotton fibres can be blended with other fibres for optical or functional purposes. If the blended fibre is a regenerated or synthetic fibre, their endless filaments are cut to the staple length of cotton.

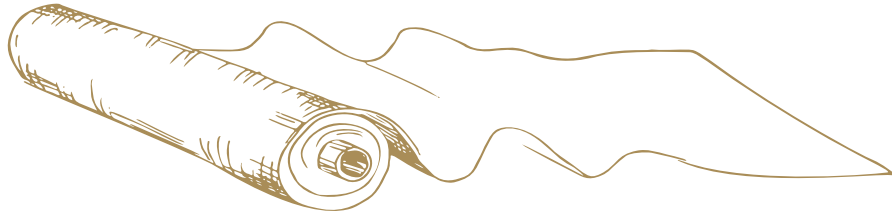
*\* Our cotton products are exclusively made from ring-spun cotton. In our basic wear, we use carded yarns, while in our Lux collection, combed yarns are employed.*





## Ring-spun

*No matter, if T-shirts, polo shirts or sweatshirts. We exclusively use ring-spun cotton in our entire collection. Because quality matters.*



## OUR FABRICS

### Knitted Fabrics

Fabrics formed by intertwining loops of thread are called knitted fabrics. The horizontally adjacent loops are referred to as courses, and the vertically adjacent ones as wales. When the thread is routed from back to front through the previous loop, it's called a knit stitch; when looped from front to back, it's called a purl stitch.

Additional design elements used in knitted fabrics are float or tuck stitches. In a float stitch, one or more loops in a course are skipped; in a tuck stitch, a loop is elongated or widened over multiple courses or wales. By combining knit and purl, tuck and float stitches, various patterns and functionalities can be achieved in the fabric. Due to their loop structure, knitted fabrics are generally very elastic and resistant to wrinkles, providing a high wearing comfort.

✦ *The following constructions are used for our products.*

### Single Jersey

One of the most common knitted fabrics is the single jersey. It's usually produced as tubular fabric on a circular knitting machine, which can create fine fabrics. On a round arrangement of needles identical stitches are knitted, resulting in two differently looking fabric sides. With only knit stitches on the right side, the fabric has a very soft and even surface that offers a pleasant feel and is great for finishing.

✦ *All Stedman® T-shirts are made of soft single jersey, perfect for everyday wear.*



For added comfort and elasticity, elastane filament can be added to the knitting machine along with the cotton yarn. Depending on whether this is done in every or every second wale, it's referred to as "half-feeder" or "full-feeder" technology. The latter generates a more uniform distribution of elastane, thus creating a higher-quality fabric.

✦ *Our stretch styles are made using the full-feeder technique.*

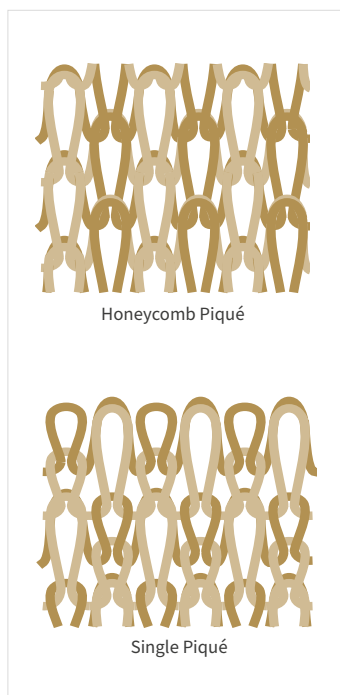
## Piqué

Piqué refers to fabrics with alternating raised and lowered areas on the surface, achieved through tuck stitches in knitted fabrics. Two types of piqué are used in our polo shirts:

### Honeycomb Piqué

This type of piqué alternates between knit and tuck stitches in both courses and wales, resulting in a loose fabric with a honeycomb-like pattern.

✦ We use honeycomb piqué in our basic wear polo shirts. It is recommended for applications without significant mechanical stress.



### Single Piqué

The single piqué pattern is created by repeating a sequence of four rows. It starts with a row of knit stitches, followed by a row alternating between knit and tuck stitches. The third row again consists of knit stitches only, and the last row alternates tuck and knit stitches opposite to the second row. This creates a fine but stable grid-like pattern.

✦ You can find single piqué in our Lux polo shirts. It is highly stable and suitable for various applications. Our stretch polo shirts are made using the same elastane filament full-feeder technique as single jersey.

## Interlock

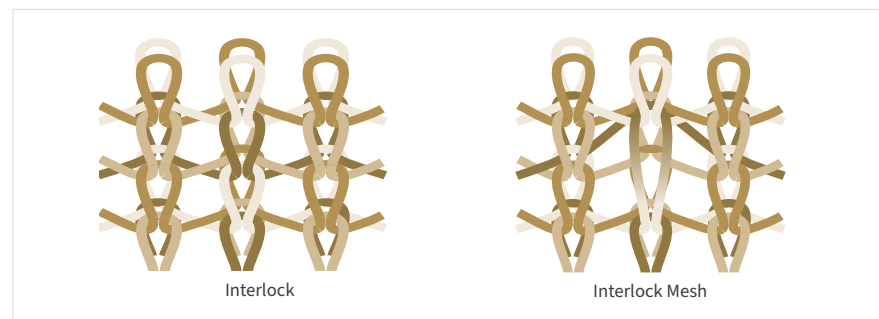
Interlock fabrics, also known as double knits, differ from single jersey in that they are knitted on two opposing needle beds. After each stitch the yarn is transferred from one needle bed to another, creating a crossover and forming a strong bond. Knit stitches are produced on both needle beds, resulting in both fabric sides having the same appearance. Due to the stitch arrangement, interlock is slightly thicker, making it more robust than single jersey, whilst enabling various design possibilities.

✦ You can find pure interlock made from ACTIVE-DRY® yarn in our Sports-T's. Its smooth surface allows for excellent finishing, while our yarn selection ensures great moisture control.

### Interlock Mesh

To achieve a mesh effect, loops are elongated at regular intervals on the front needle bed of an interlock construction. This results in a perforated structure called mesh. The reverse side remains smooth as in pure interlock. The mesh structure transports moisture even more efficiently.

✦ We use "bird-eyelet-mesh" made from ACTIVE-DRY® yarn in our Active 140 sportswear. It is ideal for intense workouts.





## 2-Thread-Fleece

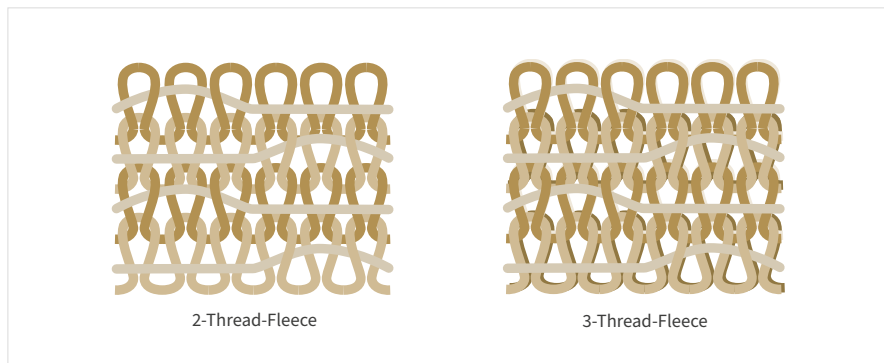
2-thread-fleece is a single jersey construction with a second yarn loosely attached on the backside, which is finished by brushing. These fabrics are usually lighter than their 3-end counterparts.

✦ You can find 100% ring-spun cotton 2-end fleece in our Light Hoodie.

## 3-Thread-Fleece

A 3-thread-fleece is a single jersey with two consecutive yarns and a third yarn loosely attached on the backside. This construction allows for different materials on the fabric's front and back sides. The left fabric side is brushed after the knitting process to achieve the characteristic soft interior.

✦ At Stedman® we process 3-thread-fleece from ring-spun yarns in almost all of our sweatshirts and hoodies. It utilizes pure cotton as the surface yarn, creating a soft, well-finished surface. For dimensional stability, we use a mixed yarn of cotton and polyester as the connecting yarn and weave in puffy polyester yarn on the back, which can be optimally brushed and thus generates a particularly high wearing comfort.



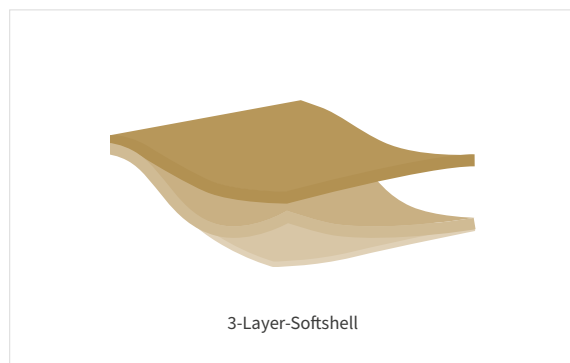
## Micro Fleece

Micro fleece is created by incorporating an additional thread in a single jersey knitted fabric, forming a loop at a 90° angle to the surface. These loops are then cut open and brushed, resulting in the familiar soft surface. Depending on the desired functionality, both sides of the fabric can be brushed.

Our micro fleece is made from a polyester multifilament. With a number of 144 filaments per yarn, it is referred to as a micro fibre. The soft, brushed surface not only offers a high level of wearing comfort, but can also optimally retain body heat due to the extremely high number of individual fibres on the surface of the fabric. For long-term durability, our micro fleece styles are provided with an anti-pilling finish.

## Knit Fleece

The manufacturing process of our knit fleece is similar to that of a micro fleece brushed on one side and scores with the same advantages. On the right side of the fabric, however, a comparatively thick polyester multifilament creates the distinctive knit structure that gives the knit fleece its sporty, elegant look.



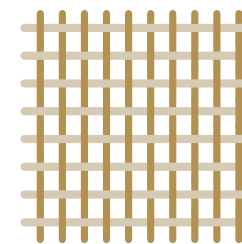
3-Layer-Softshell

## 3-Layer Softshell

A 3-layer softshell consists of three different materials that are bonded together. All three contribute to the fabric's functionality.

Our softshell features a fine polyester single jersey on the outside, offering elasticity and water resistance due to its choice of fibre. A semi-permeable membrane is placed in the middle, preventing external water from entering while allowing body-transpired water vapor to escape. The inside of our softshell features a micro fleece, which, like the outside single jersey, is elastic and retains body heat.

Stedman® Softshell guarantees maximum comfort with optimal functionality, making it perfect for outdoor use.



Taffeta

## Woven Fabrics

Woven fabrics are created by crossing horizontal (weft) and vertical (warp) threads to form a textile surface. These fabrics are inherently less elastic and can be tightly woven to create waterproof surfaces. We use woven fabrics for our padded jackets and vests.

### Taffeta

Taffeta is woven by using a plain weave. This is the simplest and tightest of all weave types, where each warp thread is alternating over a weft thread. Woven from water-repellent nylon, it creates a waterproof surface for our padded jackets and vests.

# SIZES

2024

Our international size charts at a glance.

[stedman.eu/size-charts](https://stedman.eu/size-charts)





MEN	EU	DE, FR, ES, PT	IT	UK	BODY HEIGHT		CHEST		WAIST		HIPS	
					cm	inches	cm	inches	cm	inches	cm	inches
	XS	42-44	32-34	32-34	172-175	67.5-69	78-85	30.5-33.5	66-73	26-28.5	87-92	34.5-36
S	44-46	34-36	34-36	173-182	68-71.5	86-93	34-36.5	74-81	29-32	93-98	36.5-38.5	
M	48-50	38-40	38-40	175-184	69-72.5	94-99	37-39	82-89	32.5-35	99-104	39-41	
L	52-54	42-44	42-44	177-186	69.5-73	100-105	39.5-41.5	90-97	35.5-38	105-110	41.5-43.5	
XL	56-58	46-48	46-48	179-188	70.5-74	106-111	41.5-43.5	98-105	38.5-41.5	111-116	43.5-45.5	
XXL	60-62	50-52	50-52	181-190	71.5-75	112-117	44-46	106-113	41.5-44.5	117-122	46-48	
3XL	64-66	54-56	54-56	185-191	73-75	118-123	46.5-48.5	114-121	45-47.5	123-128	48.5-50.5	
4XL	68-70	58-60	58-60	185-191	73-75	124-129	49-51	122-129	48-51	129-132	51-52	
5XL	72	62	62	185-191	73-75	130-135	51-53	130-135	51-53	133-138	52.5-54.5	

WOMEN	EU	DE	FR, ES, PT	IT	UK	BODY HEIGHT		CHEST		WAIST		HIPS	
						cm	inches	cm	inches	cm	inches	cm	inches
	XS	32-34	34-36	36-38	6-8	165-172	65-67.5	74-84	29-33	58-65	23-25.5	85-90	33.5-35.5
S	36-38	38-40	40-42	10-12	165-172	65-67.5	85-92	33.5-36	66-73	26-28.5	91-96	36-38	
M	40-42	42-44	44-46	14-16	165-172	65-67.5	93-97	36.5-38	74-81	29-32	97-102	38-40	
L	44-46	46-48	48-50	18-20	165-172	65-67.5	98-107	38.5-42	82-90	32.5-35.5	103-110	40.5-43.5	
XL	48-50	50-52	52-54	22-24	165-172	65-67.5	108-117	42.5-46	91-102	36-40	111-118	43.5-46.5	
XXL	50-52	52-54	54-56	24-26	165-172	65-67.5	118-123	46.5-48.5	103-114	40.5-45	119-124	47-49	
3XL	54-56	56-58	58-60	28-30	165-172	65-67.5	124-134	49-53	115-126	45.5-49.5	125-135	49-53	
4XL	58-60	60-62	62-64	32-34	165-172	65-67.5	135-145	53-57	127-136	50-53.5	136-146	53.5-57.5	

CHILDREN	EU	AGE	BODY HEIGHT		CHEST		WAIST		HIPS	
			cm	inches	cm	inches	cm	inches	cm	inches
	3XS	1-2	86-92	34-36	53-54	21-21.5	49-52	19.5-20.5	52-56	20.5-22
XXS	3-4	98-104	38.5-41	55-56	21.5-22	52-53	20.5-21	57-60	22.5-23.5	
XS	5-6	110-116	43.5-45.5	57-58	22.5-23	54-55	21.5	61-63	24-25	
S	7-8	122-128	48-50.5	61-64	24-25	56.5-58	22-23	66-69	26-27	
M	9-10	134-140	53-55	67-70	26.5-27.5	59-61	23-24	72-75	28.5-29.5	
L	11-12	146-152	57.5-60	73-76	28.5-30	62-65	24.5-25.5	78-81	30.5-32	
XL	12-13	158-164	62-64.5	79-82	31-32.5	65-69	25.5-27	85-87	33.5-34.5	

UNISEX	EU	DE		FR, ES, PT		IT		UK	
		WOMEN	MEN	WOMEN	MEN	WOMEN	MEN	WOMEN	MEN
	XXS	32-34	-	34-36	-	36-38	-	6-8	-
XS	36-38	42-44	38-40	42-44	40-42	30-32	10-12	30-32	
S	40-42	44-46	42-44	44-46	44-46	34-36	14-16	34-36	
M	44-46	48-50	46-48	48-50	48-50	38-40	18-20	38-40	
L	48-50	52-54	50-52	52-54	52-54	42-44	22-24	42-44	
XL	50-52	56-58	52-54	56-58	54-56	46-48	24-26	46-48	
XXL	54-56	60-62	56-58	60-62	58-60	50-52	28-30	50-52	
3XL	58-60	64-66	60-62	64-66	62-64	54-56	32-34	54-56	
4XL	-	68-70	-	68-70	-	58-60	-	58-60	
5XL	-	72	-	72	-	62	-	62	

The stated sizes are subject to standard tolerances and have only been stated for orientation purposes. Some articles possess a tighter cut to emphasize the shape of the body (indicated as 'Fitted' in product descriptions). Please order one size larger if you require a looser fit. All sizes are 'to fit' sizes.

# PRINT & EMBROIDERY

## Collection 2024

When it comes to our garments, style, function and comfort are not the only things that matter to us. We pay particular attention to the most diverse methods of printability so that your various decoration techniques can be applied to our products in outstanding quality.

Our fabrics offer an even and smooth surface, which enables an optimal printing result. To meet the highest demands, we are constantly working to adapt our products to the latest printing techniques. To do this, we test each and every product together with our print test team. To continuously optimise our products, we are constantly looking for printability testers.

You are welcome to join our print test team. Simply fill out the registration form at:

[stedman.eu/print-tester](https://stedman.eu/print-tester)



## Screen printing

**Screen printing is the most widely used printing process in the promotional textile industry. Here, the printing ink is pressed through a stencil onto the textile. We divide screen printing into 3 types:**

### Plastisol screen printing

The most popular colours in textile screen printing are plastisol colours. The advantages of plastisol inks are, among other things, their high opacity, long durability after numerous washings and the implementation of special colours.

*\* Plastisol printing requires a smooth surface, so we recommend all our products except fleece & padded articles.*

### Water-based screen printing

The big advantage of this printing technique is the feel. Prints with water-based screen printing ink are very smooth. After washing the printed shirt you will hardly feel any difference between the printed and the unprinted area.

*\* We recommend this environmentally friendly and water-based screen printing on 100% cotton, our popular cotton-elastane shirts and on all our sweat products.*

### Discharge

For discharge printing, the ink is mixed with a bleaching agent, which brightens the colour of the textile. Due to the brightened material, the ink has a higher opacity and the printing layer can be kept very thin. Discharge printing offers a particularly high-quality feel, as the ink is hardly noticeable.

*\* The discharge process requires the same fabric compositions as water-based screen printing, but not every colour is suitable.*

## Direct to garment

DTG (direct to garment) printing is one of the latest printing techniques and is becoming increasingly popular in the textile printing industry. The design is applied directly to the textile fabric using an inkjet process and is then fixed using heat.

*\* We recommend DTG on 100% cotton, our popular cotton-elastane shirts and on all our sweat products.*

## Direct to film

Direct to film (DTF) designs are printed onto a film which is pressed on the garment after applying and melting a powder to the printed film. Fabrics suitable for transfer can be used for DTF as well.

*\* We recommend DTF on all our products.*

## Transfer

With all transfer techniques, the design is applied to a carrier and then pressed onto the textile. Under transfer we have summarised various types of finished transfers (Aqua, Nylon...) as well as Flex, Flock & Sublimation.

*\* We recommend transfer on all our products.*



### Sublimation printing

In sublimation printing, a special ink is used that turns into gas when heat is applied and can thereby be absorbed into the fibres of the textile. Sublimation printing offers particularly long durability and a high-quality feel.

*\* A polyester layer is required for this, which is why we can recommend all our polyester sports shirts. As sublimation printing does not provide sufficient opacity on dark textiles, we only recommend light colours for sublimation.*



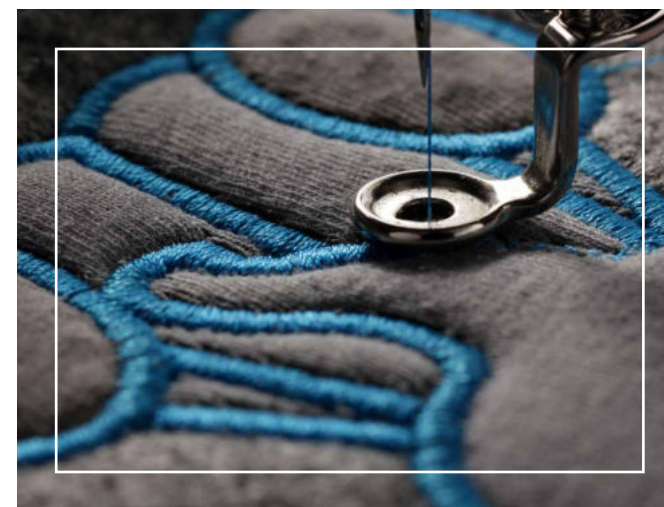
For more information on print & embroidery please visit our website:

[stedman.eu/printability](https://stedman.eu/printability)

## Embroidery

Embroidery with needle and thread can be a finishing option for almost all textiles.

*\* We can especially recommend all our jackets, whether fleece, softshell or nylon. But also our sweat products are perfect for embroidery. In general, we can recommend all fabrics that weigh more than 145 g/m<sup>2</sup>.*





# INDEX

## Collection 2024

The Stedman® collection 2024 by article number. New styles are highlighted in bold.

[stedman.eu/complete-collection](https://stedman.eu/complete-collection)



## Men

<b>ST2000</b> Classic-T	18	<b>ST8420</b> Active 140 Long Sleeve	91
<b>ST2010</b> Classic-T Fitted	21	<b>ST8440</b> Active 140 Sleeveless	88
<b>ST2020</b> Classic-T Organic	22	<b>ST8450</b> Active 140 Polo	90
<b>ST2100</b> Comfort-T 185	26	<b>ST8600</b> Cotton Touch	93
<b>ST2130</b> Comfort-T 185 Long Sleeve	45	<b>ST8830</b> Recycled Sports-T Move	96
<b>ST2300</b> Classic-T V-neck	38	<b>ST8840</b> Recycled Sports-T Reflect	97
<b>ST2500</b> Classic-T Long Sleeve	44	<b>ST8850</b> Recycled Sports-T Race	95
<b>ST2800</b> Classic Tank Top	42	<b>ST9000</b> Ben Crew Neck	33
<b>ST2810</b> Tank Top	43	<b>ST9010</b> Ben V-neck	39
<b>ST3000</b> Polo	57	<b>ST9020</b> Morgan Crew Neck	34
<b>ST3400</b> Polo Long Sleeve	59	<b>ST9040</b> Morgan Long Sleeve	46
<b>ST4000</b> Sweatshirt Classic	68	<b>ST9050</b> Henry Polo	64
<b>ST4100</b> Sweat Hoodie Classic	71	<b>ST9060</b> Harper Polo	(120)
<b>ST4200</b> Sweat Hoodie Light	70	<b>ST9060 Lux Polo</b>	<b>62</b>
<b>ST5010</b> Fleece Vest	104	<b>ST9080</b> Knit Long Sleeve	51
<b>ST5020</b> Fleece Half-Zip	106	<b>ST9100</b> Finest Cotton-T	36
<b>ST5030</b> Fleece Jacket	103	<b>ST9400</b> Shawn Slub Crew Neck	(119)
<b>ST5040</b> Power Fleece Jacket	108	<b>ST9430</b> Shawn Henley T-shirt	37
<b>ST5060</b> Melange Fleece Jacket	(122)	<b>ST9460</b> Shawn Henley Long Sleeve	50
<b>ST5080</b> Hooded Fleece Jacket	107	<b>ST9600</b> Clive Crew Neck	30 (119)
<b>ST5420</b> Lux Padded Jacket	115	<b>ST9610</b> Clive V-neck	40
<b>ST5430</b> Lux Padded Vest	116	<b>ST9620</b> Clive Long Sleeve	47
<b>ST5440</b> Lux Softshell Jacket	113	<b>ST9630</b> Clive Relaxed	32
<b>ST5600</b> Sweat Hoodie Select	73 (122)	<b>ST9640</b> Clive Polo	61
<b>ST5610</b> Sweat Jacket Select	74 (122)	<b>ST9691</b> Dexter Boxers	53
<b>ST5620</b> Sweatshirt Select	69	<b>ST9692</b> Dexter Briefs	52
<b>ST5630</b> Recycled Sweat Hoodie	75		
<b>ST5650</b> Recycled Sweatpants	77		
<b>ST5840</b> Recycled Scuba Jacket	99		
<b>ST5850</b> Knit Fleece Jacket	109		
<b>ST7000</b> Lux-T	28		
<b>ST8000</b> Sports-T	81		
<b>ST8010</b> Sports Top	82		
<b>ST8020</b> Intense Tech	(121)		
<b>ST8030</b> Active 140 Team Raglan	87		
<b>ST8050</b> Piqué Polo	(120)		
<b>ST8400</b> Active 140 Crew Neck	86		
<b>ST8410</b> Active 140 Raglan	85		

## Women

<b>ST2000</b> Classic-T	18	<b>ST9150</b> Hanna Polo	(120)
<b>ST2020</b> Classic-T Organic	22	<b>ST9160 Lux Polo</b>	<b>62</b>
<b>ST2160</b> Comfort-T 185	26	<b>ST9180</b> Knit Long Sleeve	51
<b>ST2600</b> Classic-T	19	<b>ST9320</b> Slub Organic	(119)
<b>ST2620</b> Classic-T Organic	23	<b>ST9500</b> Sharon Slub Crew Neck	(119)
<b>ST2700</b> Classic-T V-neck	38	<b>ST9530</b> Sharon Henley T-shirt	37
<b>ST2900</b> Classic Tank Top	42	<b>ST9580</b> Sharon Henley Long Sleeve	50
<b>ST3100</b> Polo	57 (120)	<b>ST9700</b> Claire Crew Neck	30
<b>ST4000</b> Sweatshirt Classic	68	<b>ST9710</b> Claire V-neck	40
<b>ST4110</b> Sweat Hoodie Classic	71	<b>ST9720</b> Claire V-neck Long Sleeve	48
<b>ST4200</b> Sweat Hoodie Light	70	<b>ST9730</b> Claire Relaxed	32
<b>ST5100</b> Fleece Jacket	103	<b>ST9740</b> Claire Polo	61
<b>ST5110</b> Fleece Vest	104		
<b>ST5520</b> Lux Padded Jacket	115		
<b>ST5530</b> Lux Padded Vest	116		
<b>ST5540</b> Lux Softshell Jacket	113		
<b>ST5600</b> Sweat Hoodie Select	73 (122)		
<b>ST5630</b> Recycled Sweat Hoodie	75		
<b>ST5650</b> Recycled Sweatpants	77		
<b>ST5710</b> Sweat Jacket Select	74		
<b>ST5940</b> Recycled Scuba Jacket	99		
<b>ST5950</b> Knit Fleece Jacket	109 (122)		
<b>ST7000</b> Lux-T	28		
<b>ST7600</b> Lux-T	29		
<b>ST8100</b> Sports-T	81		
<b>ST8110</b> Sports Top	82		
<b>ST8120</b> Intense Tech	(121)		
<b>ST8130</b> Active 140 Team Raglan	87 (121)		
<b>ST8500</b> Active 140 Raglan	85		
<b>ST8540</b> Active 140 Tank	89		
<b>ST8700</b> Cotton Touch	91 (121)		
<b>ST8930</b> Recycled Sports-T Move	96		
<b>ST8940</b> Recycled Sports-T Reflect	97		
<b>ST8950</b> Recycled Sports-T Race	95		
<b>ST8990</b> Seamless Tights	92		
<b>ST9110</b> Finest Cotton-T	36		
<b>ST9120</b> Megan Crew Neck	35		
<b>ST9130</b> Megan V-neck	41		

## Unisex

<b>ST2000</b> Classic-T	18
<b>ST2020</b> Classic-T Organic	22
<b>ST4000</b> Sweatshirt Classic	68
<b>ST4200</b> Sweat Hoodie Light	70
<b>ST5600</b> Sweat Hoodie Select	73 (122)
<b>ST5630</b> Recycled Sweat Hoodie	75
<b>ST5650</b> Recycled Sweatpants	77
<b>ST7000</b> Lux-T	28

## Children

<b>ST2200</b> Classic-T	20
<b>ST2220</b> Classic-T Organic	25
<b>ST3200</b> Polo	57
<b>ST8170</b> Sports-T	81
<b>ST8570</b> Active 140 Raglan	85



You can download the digital Stedman® catalogue, colour card, product sheets and more at: [stedman.eu/tools](https://stedman.eu/tools)



Find discontinued styles at a great discount in our Stedman® online outlet at: [stedman.eu/outlet](https://stedman.eu/outlet)



For the production of this catalogue we have chosen sustainable printing:



The PEFC Council (Programme for the Endorsement of Forest Certification schemes) is an independent, non-profit, nongovernmental organization, founded in 1999 which promotes sustainably managed forests through independent third party certification. The PEFC provides an assurance mechanism to purchasers of wood and paper products that they are promoting the sustainable management of forests.